

Automotive EV Fuse Links multicomp^{PRO}

RoHS
Compliant



Description

These series EV fuses are specially engineered and tested to provide best-in-class protection performance in protecting high power battery charging and managing systems of Electrical Vehicles and Hybrid Electrical Vehicles, up to 1000V DC In ratings from 70A to 800A.

Application

- Battery Charging Protection

Agency Information

- Designed to JASO D622, ISO 8820-8, UL248-20, IEC60269-7, UL248-13, GB/T 13539-4
- UL, TUV, CCC certified (In progress)
- IATF 16949 quality system

Features

- Reliable clearing of DC fault currents
- High cycling performance
- Low watt losses
- Ultra-compact size and power density
- High breaking capacity to 50kA
- Operation as low as 135% for 70A to 200A and 200% for 225A to 800A In overload protection
- Full coverage of battery module current
- QR code marks on each fuse for traceability

Specification Table

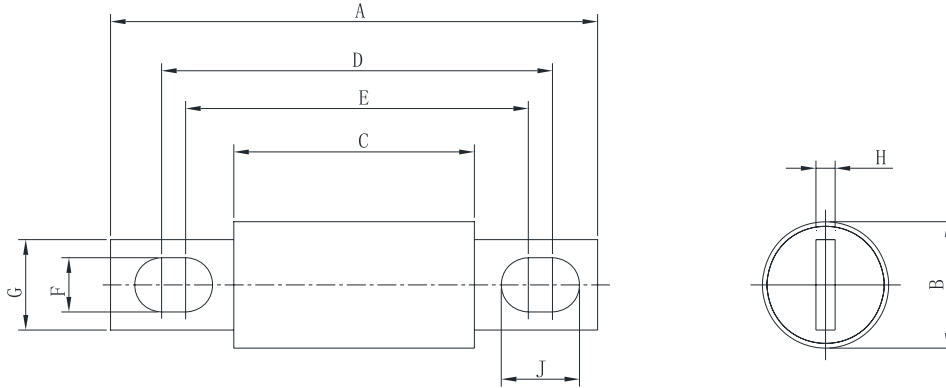
Part Number	Fuse Size	Rated Current	Ampere Code	Rated Voltage	Breaking Capacity			Melting I ² t (A ² s)	Clearing I ² t (A ² s)	Watt Loss (W) 0.5 In
					TUV	UL	Self-Certified			
MP012355	25×72	80A	2800	1000V DC	In progress	50kA	1290	4620	4.5	
MP012356		100A	3100				2390	8160	5.8	
MP012357	31×72	200A	3200				6259	20950	9	
MP012358	38×72	300A	3300				14976	42190	15.9	
MP012359	64×72	500A	3500				41590	119000	24.9	

Newark.com/multicomp-pro
Farnell.com/multicomp-pro
sg.element14.com/b/multicomp-pro

multicomp^{PRO}

Automotive EV Fuse Links **multicomp**PRO

Diagram

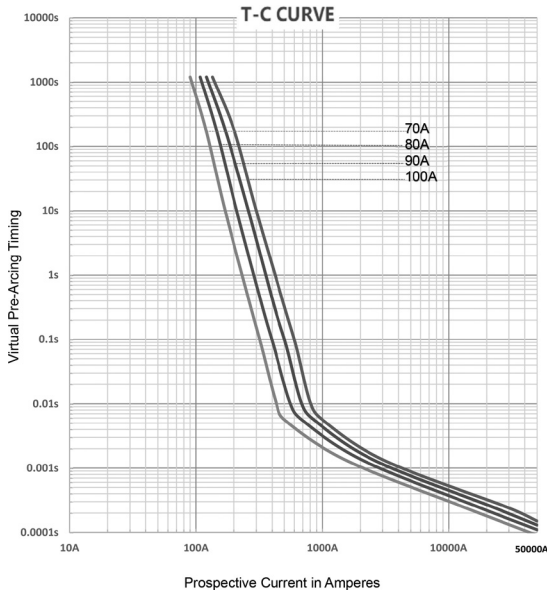


Part Number	Fuse Size	A ± 0.8mm	B ± 0.5mm	C ± 0.8mm	D ± 0.8mm	E ± 0.8mm	F ± 0.5mm	G ± 0.5mm	H ± 0.25mm	J ± 0.5mm
MP012355 MP012356	Φ25 × 72	111	25	72	95.1	88.1	8.5	15	3.2	12
MP012357	Φ31 × 72	111	31		95.1	88.1	8.5	18	5	12
MP012358	Φ38 × 72	129	38		107.1	89.1	8.5	22	6	12
MP012359	Φ64 × 72	122	64		101.5	92.5	10.5	38	10	15

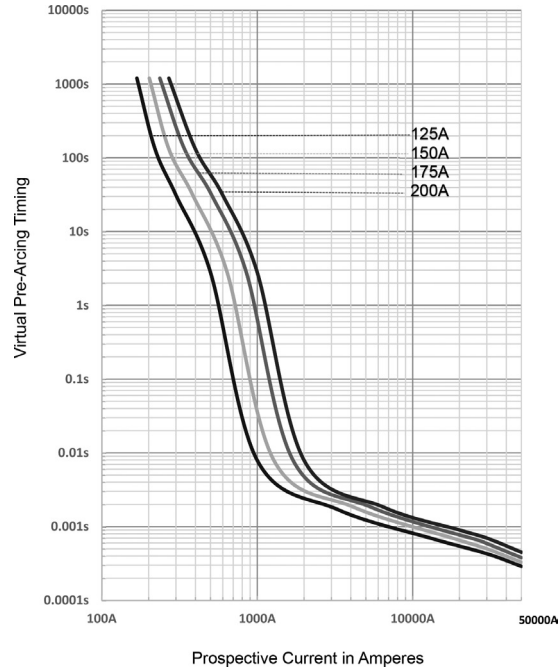
Dimensions : Millimetres

Time Current Curve

MP012355 / MP012356



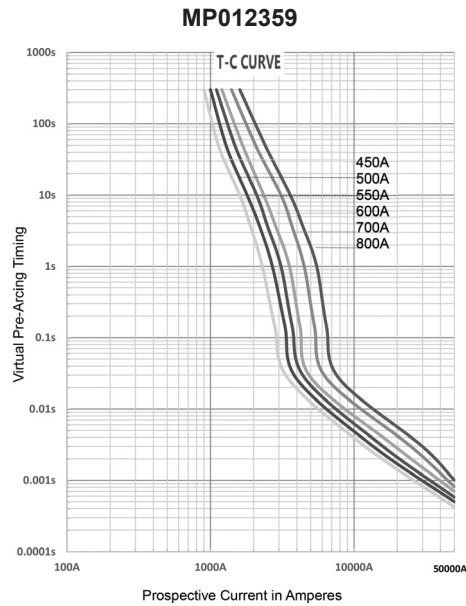
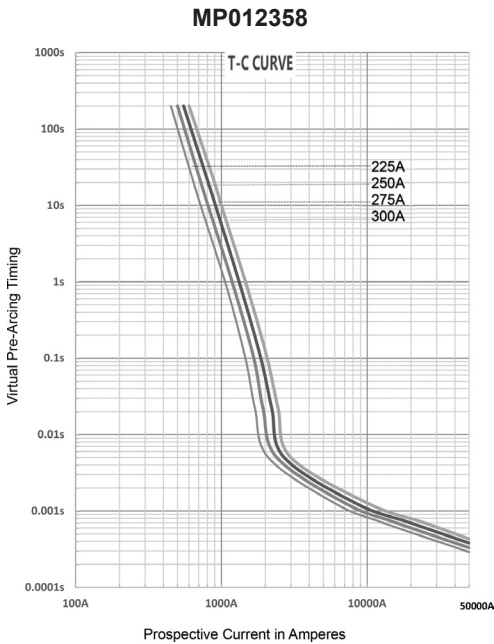
MP012357



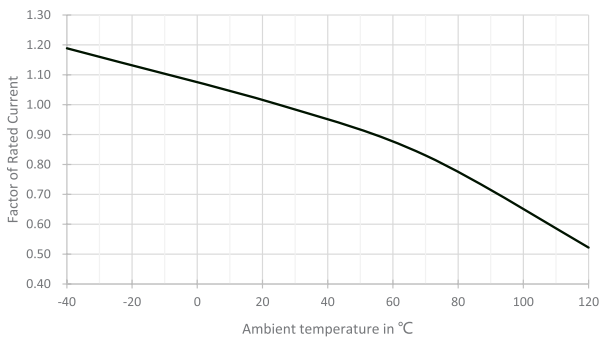
Newark.com/multicomp-pro
Farnell.com/multicomp-pro
sg.element14.com/b/multicomp-pro

multicompPRO

Automotive EV Fuse Links multicomp^{PRO}



Temperature derating curve



Part Number Table

Description	Part Number
Automotive Fuse, 80A, 1000V DC	MP012355
Automotive Fuse, 100A, 1000V DC	MP012356
Automotive Fuse, 200A, 1000V DC	MP012357
Automotive Fuse, 300A, 1000V DC	MP012358
Automotive Fuse, 500A, 1000V DC	MP012359

Important Notice : This data sheet and its contents (the "Information") belong to the members of the AVNET group of companies (the "Group") or are licensed to it. No licence is granted for the use of it other than for information purposes in connection with the products to which it relates. No licence of any intellectual property rights is granted. The Information is subject to change without notice and replaces all data sheets previously supplied. The Information supplied is believed to be accurate but the Group assumes no responsibility for its accuracy or completeness, any error in or omission from it or for any use made of it. Users of this data sheet should check for themselves the Information and the suitability of the products for their purpose and not make any assumptions based on information included or omitted. Liability for loss or damage resulting from any reliance on the Information or use of it (including liability resulting from negligence or where the Group was aware of the possibility of such loss or damage arising) is excluded. This will not operate to limit or restrict the Group's liability for death or personal injury resulting from its negligence. Multicomp Pro is the registered trademark of Premier Farnell Limited 2019.

Newark.com/multicomp-pro
Farnell.com/multicomp-pro
sg.element14.com/b/multicomp-pro

multicomp^{PRO}