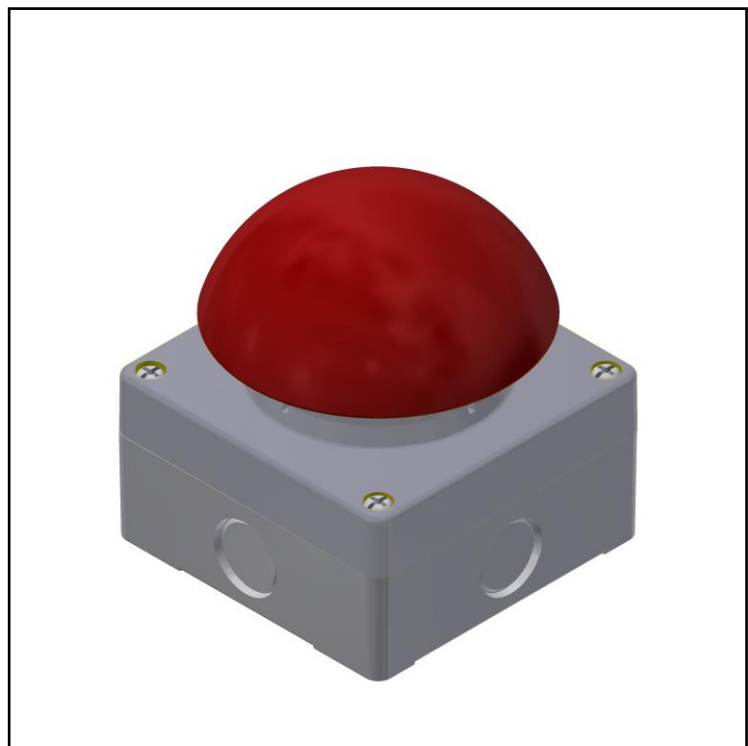


FEATURES

- E-STOP device made in thermoplastic material
- Grey cover and grey base
- Very sturdy and reliable also in harsh environment

RS PRO Mushroom Head Push Button Complete Unit - 1NO+1NC

RS Stock No.: 2398212



RS Professionally Approved Products bring to you professional quality parts across all product categories. Our product range has been tested by engineers and provides a comparable quality to the leading brands without paying a premium price.

Push Button Complete Units

Product Description

Foot and palm switch with Enclosure in thermoplastic material with \varnothing 90mm pushbutton.

General Specifications

Casing Material	Thermoplastic
Electrical connection	Two M20 knockout holes
Operator	Pushbutton
Microswitch	1 NC + 1NO
Connecting Terminals	Screw with captive cable clamp
Connecting Cables Dimensions [mm ²]	1 or 2 conductors - 0.5 ... 2.5
Enclosure Dimensions	94x94 h90

Mechanical Specifications

Operating Temperatures [°C]	-40 / +70
Stock Temperatures [°C]	-40 / +70
Mechanical durability (Millions of operations)	1
B10d (million of operations)	2
Max. switching frequency [Cicli/h]	3600

Electrical Specifications

Protection against electrical shocks	Class II - Double insulation
Rated Insulating Voltage U_i [V]	690
Pollution Degree	3
Contact rating secondo UL508	A 600 Q 300
Rated impulsive voltage [kV]	8
Conventional thermal current in air free I_{th} (θ min 40 ° C) [A] (θ)	10
Short circuit protection (EU min 500Vac - fuses type gG (gl)) [A]	10
Rated Operational Current I_e - AC-15 (50-60 Hz) [Vac - A]	24V - 10A / 240V - 6A / 400V - 4A
Rated Operational Current DC-13 [Vdc - A]	24V - 2,8A / 125V - 0.55A / 250V - 0.27A
Resistance Between Contacts [m Ω]	25

Protection Category

IP Degree of Protection	65
-------------------------	----

Additional Information

EAN	8000126233360
Custom Tariff Number	85371098

Approvals

Declarations	CE – UKCA
Standards Met	IEC 60947-1 and EN 60947-1