

Thank you for choosing **Schneider Electric** Pieno Unit. To ensure proper application of our product, please read through the following information before installation and use.

This application guide applies to the following products:

①	②	Cat. No.:	Description:
		E8231USB	1 x 2.1A USB Socket
		E8232USB	2 x 2.1A USB Socket

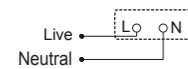
**SPECIFICATIONS**

Input Voltage	100 - 240V~
Input Frequency	50/60Hz
Input Current	0.45A(1G)/0.5A(2G)
Output Voltage	5V DC
Output Current	2.1A max(1G)/4.2A max(2G)
Panel Dimension	87mm x 87mm
Mounting Centre	60.3mm
Compliance	IEC 60950-1, GB 4943.1
Operation Temperature	Room Temperature
Protection	Over heat, over current, over voltage

**IMPORTANT NOTE**

- The products must be installed by qualified electricians
- Please check your local wiring regulations before installation
- Suggest to install product with 47mm depth wallbox
- Suitable for mounting on concrete or other non-combustible surface only
- Safekeeping the surround to prevent damage during product installation, Don't disassemble the USB module
- Turn off the power supply when you clean the product. Use a soft cloth or tissue paper to wipe off the dust and dirt on the surface. Avoid using corrosive chemicals
- Kindly ensure your device's Battery Charging Specification suitable with this USB Charger before charging
- Do not insert metal objects into USB Charger
- User will feel some heat at the product surface when charging is in progress
- A power supply cord for connection to the AC MAINS SUPPLY shall be of conductors type as below specifications: AWG 18-12, 10A Max., 250 Va.c
- For PERMANENTLY CONNECTED EQUIPMENT, a readily accessible disconnect device shall be incorporated in the building installation wiring
- Indoor use only

**WIRING DIAGRAMS**



**APPLICATION GUIDE  
USB Socket**

**CAT. NO.**  
E8231USB  
E8232USB

# Pieno

NVE10488 04 V04

**MOUNTING INSTRUCTION**

**Fixing:**

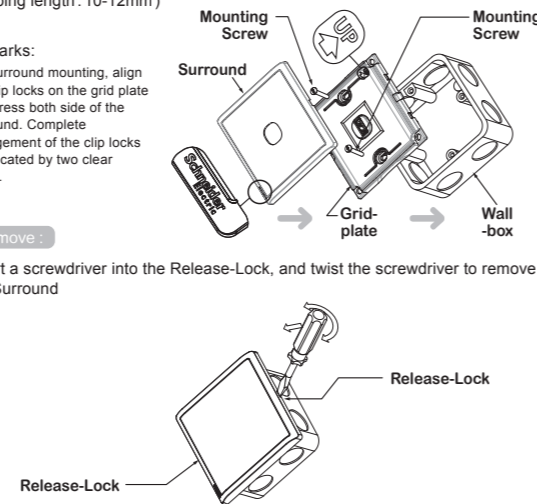
Please refer to the following diagram for proper installation: (Proper wire stripping length: 10-12mm)

**Remarks:**

For surround mounting, align the clip locks on the grid plate and press both side of the surround. Complete engagement of the clip locks is indicated by two clear clicks.

**Remove:**

Insert a screwdriver into the Release-Lock, and twist the screwdriver to remove the Surround



感謝閣下選用 **Schneider Electric** 施耐德電氣 Pieno 系列產品。在安裝及使用本產品前，請仔細閱讀此手冊內容。

此手冊適用於以下產品型號：

①	②	型號:	描述:
		E8231USB	1位2.1安培USB插座
		E8232USB	2位2.1安培USB插座

**產品規格**

輸入電壓	: 100-240V~
輸入頻率	: 50/60Hz
輸入電流	: 0.45A(1位)/0.5A(2位)
輸出電壓	: 5V DC
輸出電流	: 2.1A max(1位)/4.2A max(2位)
面板尺寸	: 87mm x 87mm
安裝孔中心距	: 60.3mm
安全標準	: IEC 60950-1, GB4943.1
使用環境溫度	: 室內溫度
模組保護功能	: 過溫保護, 過流保護, 過壓保護



**使用說明  
USB插座**

**型號**  
E8231USB  
E8232USB

# Pieno

NVE10488 04 V04

**安裝指南**

**安裝:**

請按照下列次序安裝：

- 把電線插入接線端子(建議剝線長度10-12mm),然後鎖緊螺絲以固定位置
- 把面板固定於底盒
- 安裝邊框

**注意:**

安裝邊框於面板時，請先確認及對準鎖扣的位置，然後用力壓下直至聽到“咔嚓”聲以確認邊框已完全嵌入。

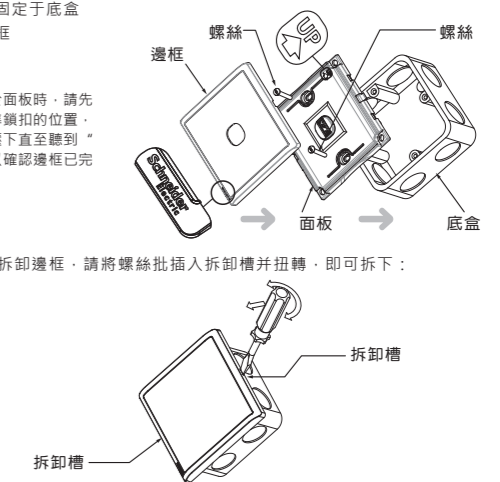
**拆卸:**

如有需要拆卸邊框，請將螺絲批插入拆卸槽并扭轉，即可拆下：

**注意事項**

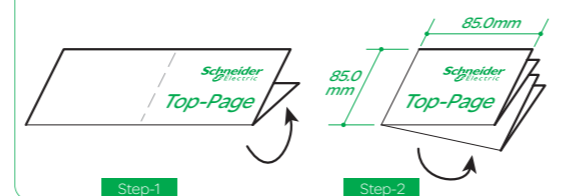
- 產品安裝須由符合資格的電工完成
- 安裝前，請確認產品符合當地相關布線規範
- 請用47毫米深度牆盒安裝產品
- 僅適宜安裝在混凝土或不易燃的表面上
- 請不要拆卸USB模組，產品安裝期間，請妥善放置與保管邊框/面蓋，以防壓傷損壞
- 清潔時，必須先關閉電源，再用輕微濕潤的軟性布料或紙巾擦拭產品表面，以清除塵埃及穢物，請勿使用帶有腐蝕性的化學劑擦拭，比如鹼性洗滌劑、酸性洗滌劑、稀釋劑、汽油、殺蟲劑等。否則，本產品可能發生表面開裂或其它故障
- 使用本充電插座充電前，須確認待充(物)的電池滿足充電電池規範
- 請勿將回型針等細小金屬物插入本充電插座的充電接口
- 充電時，充電插座表面產生微熱，屬於正常現象
- 安裝在交流端子的引線規格：250V~，10A max.，AWG 18-12
- 此永久性連接式設備不包含內部斷開裝置，相應的斷開裝置應當安裝在設備的外部
- 只供室內使用

**接線圖**



ECN201705599	Wiring drawing updated, 2017/7/6	ZXZ	02
DECN201615987	Note updated, 2016/12/29	ZXZ	01
DECN201513828	Initial Release, 2015/11/05	Out Resource	00
DECN/ECN/TCAN	DESCRIPTION	DRN	REV
NUMBER :	<b>NVE1048804</b>	Revision:	02
		Sheet:	1/1

**> Folding / Appearance & Size :**



**User Manual \ USB Socket \ Pieno**  
EN + 中文繁體 · 中國香港地區適用

**> Note:**

- 1/ 70g high quality uncoated Book-Paper (white).
- 2/ Double side printing.

Released for Manufacturing  
Printed on 2019/08/22