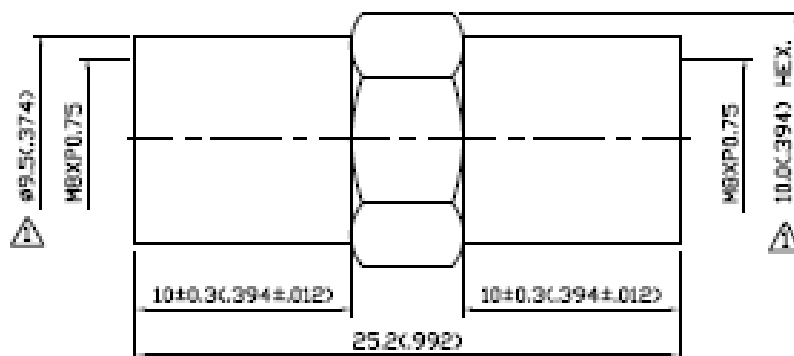


NO	DESCRIPTION	DATE
⚠	DEL. REF. BACKGROUND FORMAT UPDATED	07.20.09'
⚠	MODIFICATION CENTER CONTACT Ⓢ	02.05.10'
⚠	ADD 2.3 INSULATION -40°C TO +60° C POM — -55°C TO+125° C POM — TEFLON	04.27.10'



#### 1.0 ELECTRICAL

- 1.1 FREQUENCY RANGE: DC-900 MHz  
1.2 NOMINAL IMPEDANCE: 50 OHM

#### 2.0 MATERIALS

- 2.1 BODIES: BRASS PER JIS-C2604  
2.2 CENTER CONTACT: BRASS PER JIS-C2604  
2.3 INSULATION: TEFLON PER ASTM D1457 AND ASTM D1170 ⚠  
3.0 FINISHES AND OTHERS

3.1 SEE BELOW TABLE FOR DETAILS.

#### 4.0 ENVIRONMENTAL

- 4.1 OPERATING TEMPERATURE RANGE: -55°C TO+125° C ⚠

NO	DESCRIPTION	MATERIAL	Q'TY	FINISH
3	CENTER CONTACT	BRASS	1	GOLD
2	INSULATION	TEFLON	2	NONE
1	BODY	BRASS	1	NICKEL 100μ <sup>2</sup> MIN.



APPROVED

by \_\_\_\_\_ DATE: \_\_\_\_\_

DESCRIPTION		FME PLUG-FME PLUG		品名		23-03-1 T.G.N		DATE	版次	REV.
製圖	Yoko	TOLERANCE	.X ±0.2	TITLE	\ROHS COMPLIANT (500)	日期	04.22.93			A-3
檢圖	Jacky	.XX ±0.1	單位	mm(In)	DWG.NO.	23-0021				
認定	Lewis	.XXX ±0.05	比例	SCALE						
		ANGLE ±5°		4:1						