

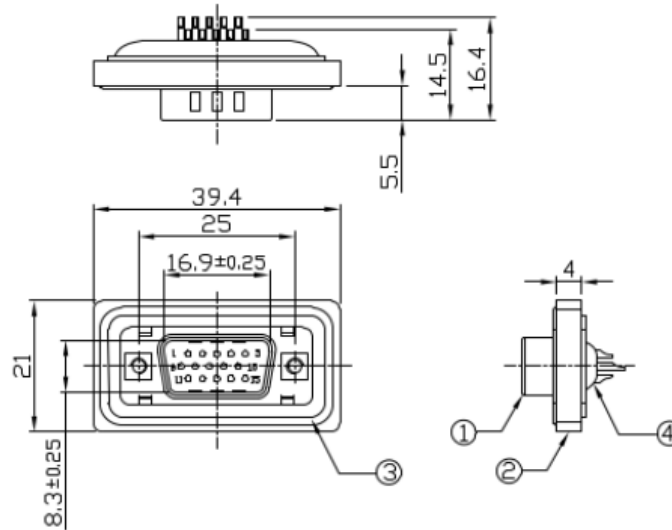
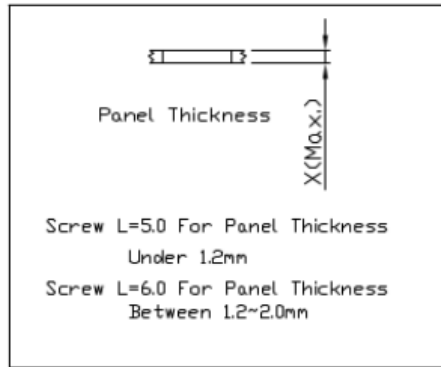


Notes: (Unless Otherwise Specified)

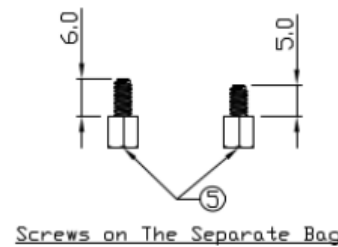
1. Waterproof Rate: IP68.
2. Recommend Panel Thickness: 0.8 to 2.0 mm.
3. Recommend Torque: 2.5~3.0 Kgf-cm.
4. Mating Cap P/Ni125-7927
5. RoHS Compliant.



REV	ECN#	DESCRIPTION OF REVISION	DRAW BY DATE	CHECK BY DATE	APPROVE BY DATE
A0		Mass Production	Joyce 01/02/13	Lucas 01/02/13	Ray 01/02/13
A1	ECN-130728	Modify Title & Notes 4.	Joyce 08/06/13	Lucas 08/06/13	Ray 08/06/13



Mating Parts:
122-3042
122-3045



Recommend Panel Cut-Out

Item	Part Name	Material / Finish	Qty
5	Machine Screw	#4-40, Copper Alloy Finish Ni Plated	4
4	Glue	Epoxy Color: Black	1
3	O-Ring	Silicone Color: Red	1
2	Housing	Thermoplastic Color: Black	1
1	D-SUB HD 15P Male	Shell: SPCC, Finish Ni Plated Contacts: Copper Alloy, Finish Au Plated Housing: Thermoplastic, Color Black	1

TITLE						REV.			
D-SUB HD 15P Panel Male Solder						A1			
	B	1:1	Vicky 08/05/10	Ray 08/05/10	Ray 08/05/10	XX ± 0.5 X.XX ± 0.2	X.XXX ± 0.05 ANGLES ± 1°	mm	1/1
THIRD ANGLE PROJECTION	SIZE	SCALE	DRAW / DATE	CHECK / DATE	APPROVE / DATE	TOLERANCES		UNIT	SHEET

RS Stock No
122-3038