

asiapaint

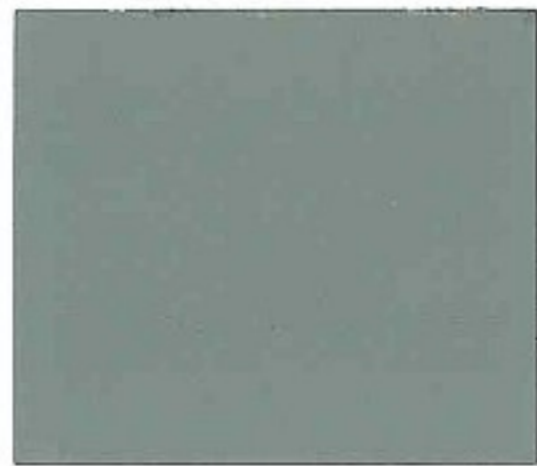


HIGH PERFORMANCE PROTECTIVE COATINGS

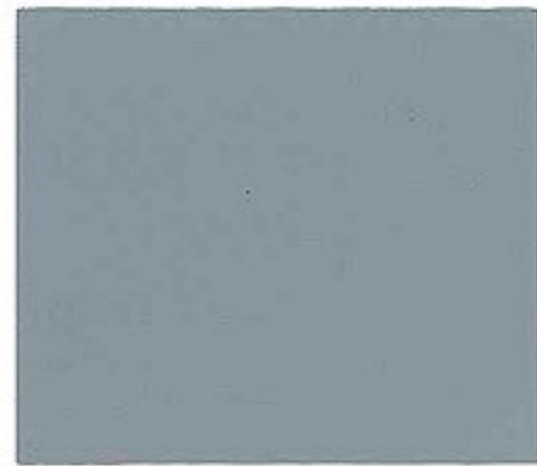




RAL 7035 LIGHT GREY



104 EXECUTIVE GREY



807 FIANELL GREY



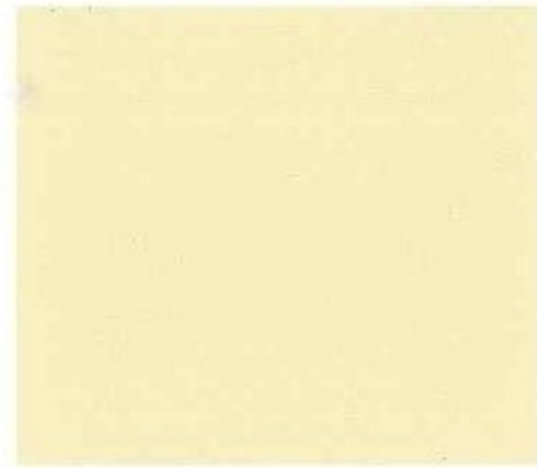
018 ADMIRALTY GREY



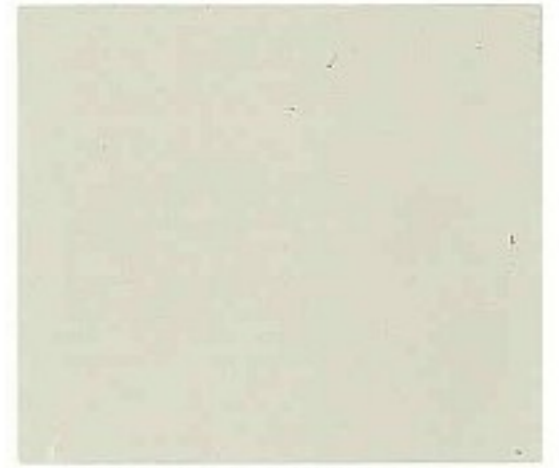
040 WHITE GREY



301 PEARL WHITE



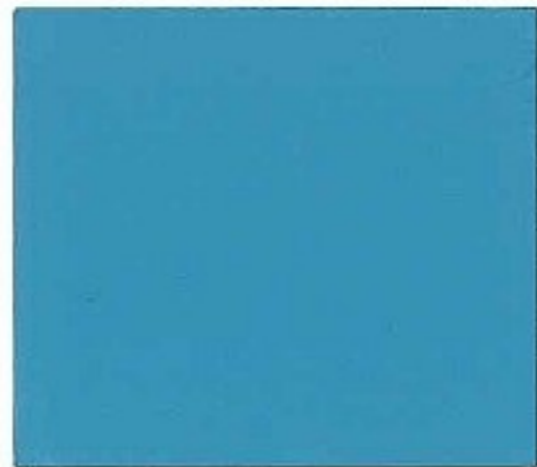
BS 4052 IVORY



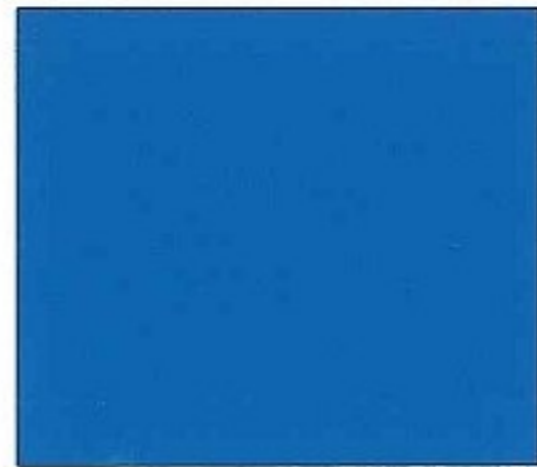
BS 9093 ASH GREY



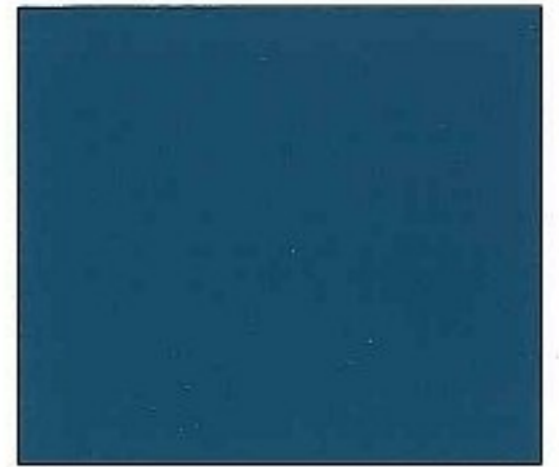
343 LIGHT BLUE



241 FRESH BLUE



RAL 5015 SKY BLUE



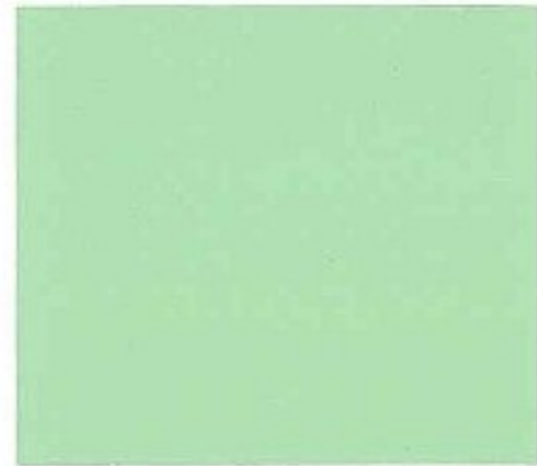
RAL 5009 AZURE BLUE



459 LIME GREEN



* RAL 6018 YELLOW GREEN



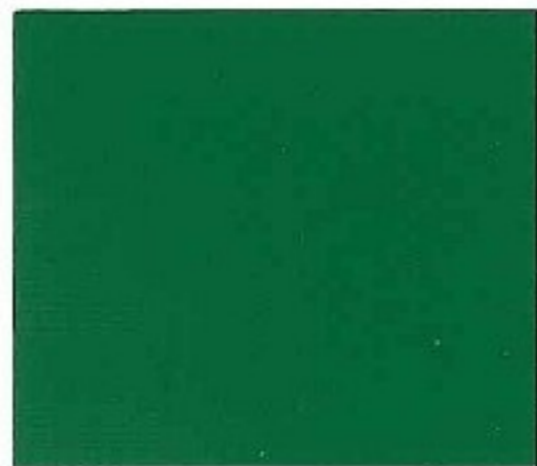
RAL 6019 PASTEL GREEN



* RAL 5017 TRAFFIC BLUE



* 218 GRASS GREEN



* 458 DARK GREEN



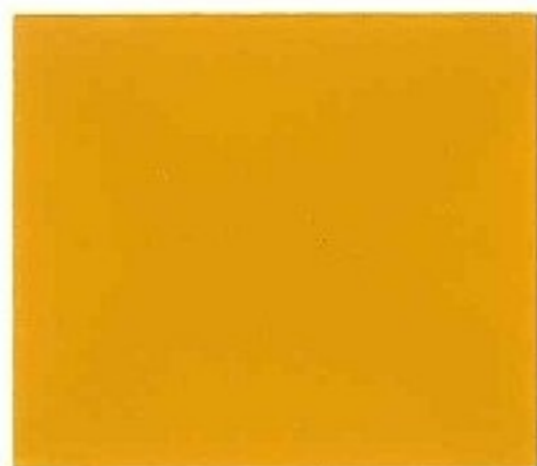
* 668 YELLOW



RAL 8028 TERRA BROWN



* 903 CANARY YELLOW



* 456 GOLDEN YELLOW



* RAL 2004 PURE ORANGE / ORANGE ROUGE



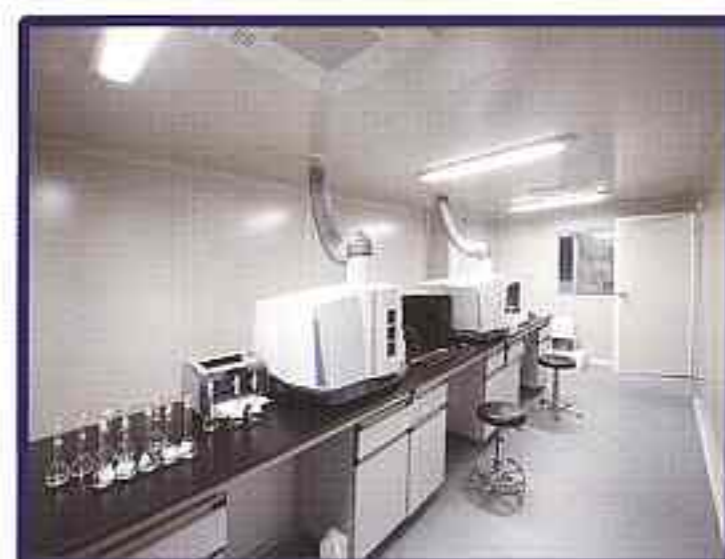
* 437 SIGNAL RED

APM Epoxy Enamel

Two-component epoxy finish based on epoxide resin and polyamide curing agent for heavy duty protection of surface material where high mechanical, chemical, and moisture resistance is required.

Suitable for steel, galvanized steel, and tile surface, such as deck fittings, superstructure exterior, etc.

APM Epoxy Enamel features tough film upon complete curing, excellent oil, abrasion, and water resistance.



PROPOSED COATING SYSTEM

| Type of Surface | Product to Use | Dry Film Thickness (microns) | Theoretical Coverage | Overcoating Interval |
|------------------|--|------------------------------|-----------------------------|----------------------|
| Concrete / Metal | 1 - 2 coats of APM Epoxy Anti-Corrosive Primer | 40 - 60 μm | 7 - 8 m^2/L | 6 hours at 30° C |
| | 1 - 2 coats of APM Epoxy Enamel | 40 - 50 μm | 7 - 8 m^2/L | 16 hours at 30° C |

APM PU 522 Enamel

Two-component polyurethane enamel based on acrylic polyol resin and polyisocyanate hardener for architectural and industrial application.

Suitable for masonry, metal, wood, etc.

APM PU 522 features tough film upon complete curing, excellent durability, and chemical resistance.



PROPOSED COATING SYSTEM

| Type of Surface | Product to Use | Dry Film Thickness (microns) | Theoretical Coverage | Overcoating Interval |
|------------------|--|------------------------------|-------------------------------|----------------------|
| Concrete / Metal | 1 - 2 coats of APM Epoxy Anti-Corrosive Primer | 40 - 60 μm | 7 - 8 m^2/L | 6 hours at 30° C |
| | 1 - 2 coats of APM PU 522 Enamel | 30 - 40 μm | 10 - 12 m^2/L | 8 hours at 30° C |

* Premium Colours

Also available in Black, White, Clear, and RAL colours

All colours shown are as close to the actual colours as modern printing techniques permit.

DIRECTIONS FOR USE

APM Epoxy Enamel and APM PU 522 Enamel



1. All surfaces to be coated should be clean, dry, and free from contaminants.
2. Remove all fungus and algae with appropriate anti fungal treatment.
3. Remove all oil and grease with appropriate grease removers.
4. Remove all salts and other contaminants with high pressure water jet.
- 5a. For concrete: Remove all loose materials such as loose paint, dust, etc by mechanical means, e.g grinding.
- 5b. For metal : Carry out mechanical cleaning to a minimum of St 3 ISO 8501-1:1988
6. Ensure the surfaces are well-prepared before coating.
Protect areas that are not required to be painted over, e.g by covering with dropsheet or masking tape.
7. Mix the paint in the specified mixing ratio.
Dilute only with recommended thinners when necessary.
8. Carry out paint application according to painting specification.

Allow the paint to dry and observe the overcoating interval time. Repeat for subsequent coats.

If the over-coating interval time has been exceeded, abrade the surface with sandpaper before subsequent coatings.

Asia Paint (Singapore) Pte Ltd

Office & Factory:

20 Tuas Ave 8, Singapore 639235
Tel: (65) 6546 3955 Fax: (65) 6546 3855
Email: sales@asiapaintsingapore.com
Website: www.asiapaintsingapore.com

Showroom:

Block 1038, Eunos Ave 3, #01-72, Singapore 409845
241/243 Kranji Road, Singapore 739494
Block 1, Pioneer Road North, #01-03, Singapore 628455
Block 5022, Ang Mo Kio Ind. Pk 2, #01-11, Singapore 569525



SCAN TO VISIT OUR WEBPAGE