



ENGLISH

Datasheet

RS PRO 200A Crimp Contacts for RS PRO Heavy Duty Range

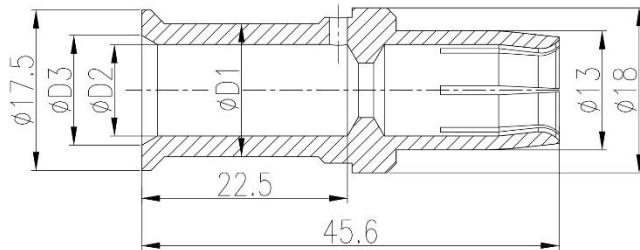


The RS PRO Heavy-Duty Connector series is a full range of heavy-duty inserts, housings, crimps and accessories. Crimps are available in 5A, 10A, 16A, 40A, 70A, 100A and 200A options which cover all but the most specialised of situations. All the crimp options are available with Silver plating however the lower current crimps are also offered with Gold plating for better conductivity at lower voltages and currents. The RS PRO Heavy-Duty connectors have been created for applications that are subjected to harsh environments or where high vibration can cause standard connectors to fail. This makes them ideal for food & beverage manufacturing, packaging machines, conveyor belt systems, railway, oil & gas processing and other industrial automation. The entire range of connectors are RoHS compliant and as with all RS PRO products, offer exceptional value for money.

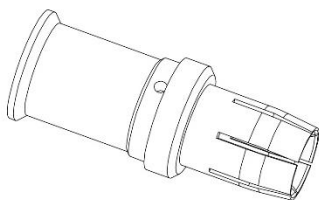
Features & Benefits:

- **Silver Plated**
- **Male and Female Crimps sold Separately**
- **Fits RS PRO Heavy Duty Inserts**
 - **RS-HM Modular Inserts**

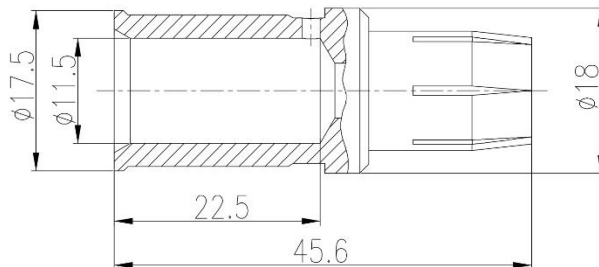
Female Dimensional drawing and sizes



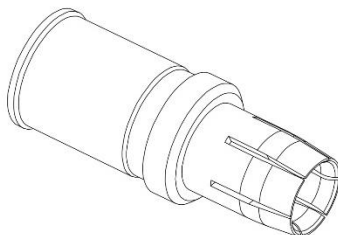
- Technical specification:
- Material: copper alloy
 - Surface: hard-silver plated
 - Rated current: 200A
 - Contact resistance: $\leq 0.3m\Omega$
 - Wire gauge: $70mm^2$
 - Mating cycles: ≥ 500
 - For stranded fine wire acc.to: IEC 60228-5



RS Stock Code Silver-Plated	Wire Diameter mm ²	D1	D2	D3	Stripping Length
208-4669	25	10	7	9	22.5
208-4670	35	12.5	8.2	10.2	22.5
208-4671	50	14.5	10	12	22.5

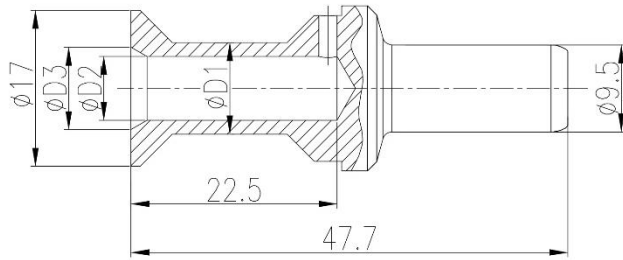


- Technical specification:
- Material: copper alloy
 - Surface: hard-silver plated
 - Rated current: 200A
 - Contact resistance: $\leq 0.3m\Omega$
 - Wire gauge: $70mm^2$
 - Stripping length: 22.5mm
 - Mating cycles: ≥ 500
 - For stranded fine wire acc.to: IEC 60228-5

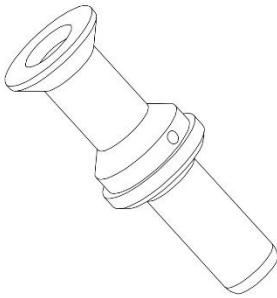


RS Stock Code Silver-Plated	Wire Diameter mm ²
208-4672	70

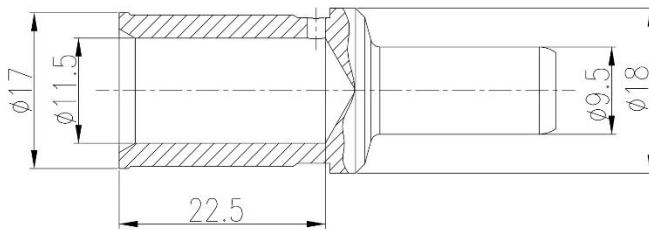
Male Dimensional drawing and sizes



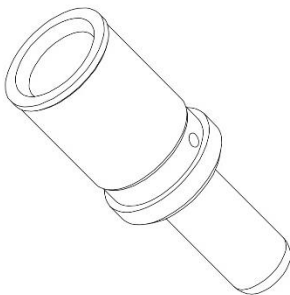
Technical specification:
 - Material: copper alloy
 - Surface: hard-silver plated
 - Rated current: 200A
 - Contact resistance: $\leq 0.3m\Omega$
 - Wire gauge: 70mm²
 - Mating cycles: ≥ 500
 - For stranded fine wire acc.to: IEC 60228-5



RS Stock Code Silver-Plated	Wire Diameter	D1	D2	D3	Stripping Length
	mm ²				
208-4673	25	10	7	9	22.5
208-4674	35	12.5	8.2	10.2	22.5
208-4675	50	14.5	10	12	22.5



Technical specification:
 - Material: copper alloy
 - Surface: hard-silver plated
 - Rated current: 200A
 - Contact resistance: $\leq 0.3m\Omega$
 - Wire gauge: 70mm²
 - Stripping length: 22.5mm
 - Mating cycles: ≥ 500
 - For stranded fine wire acc.to: IEC 60228-5



RS Stock Code Silver-Plated	Wire Diameter mm ²
208-4676	70