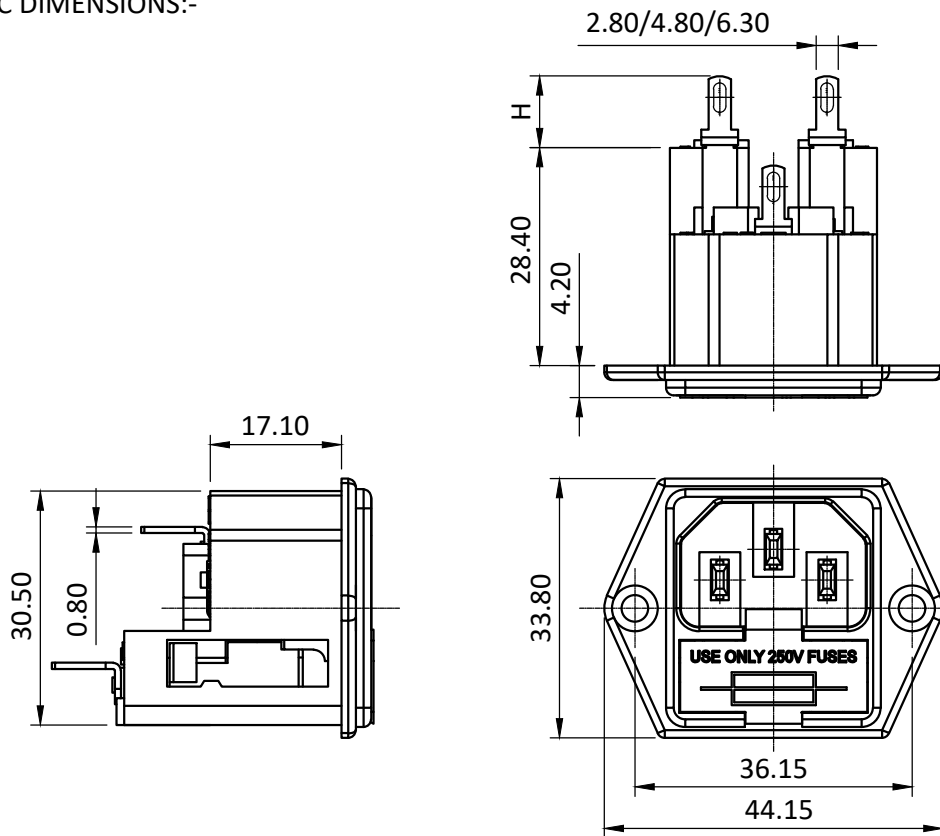


PRODUCT DATA SHEET

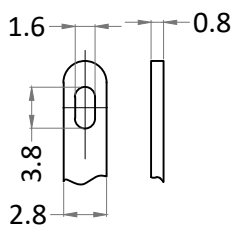
BASIC DIMENSIONS:-



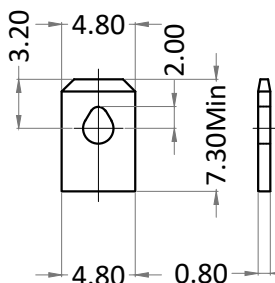
Terminal types	Terminal height(H)
2.80 Terminals	8.10 Min
4.80 Terminals	7.30 Min
6.30 Terminals	8.90 Min

TERMINALS
(Scale:- 2:1)

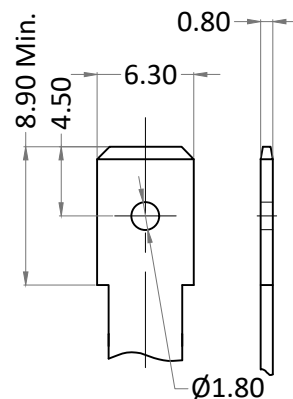
2.8x0.8 (T2)



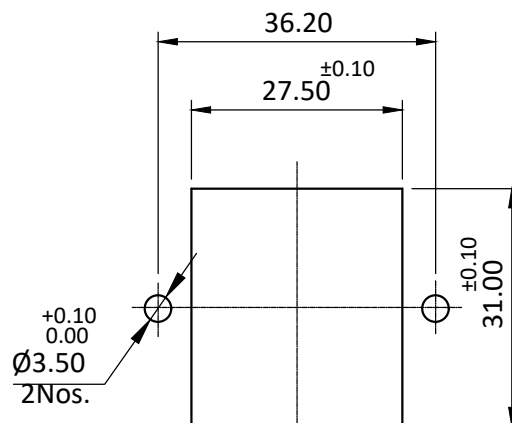
4.8x0.8 (T4)


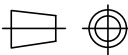


6.3x0.8 (T5)




PANEL CUTOUT



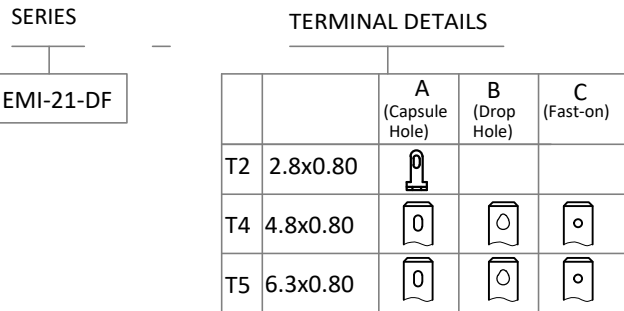
						PRODUCT : MAINS INLETS			CODE : EMI-21-DF-X				
						APP	29.05.19	GJG	 Plot E-4, Kagal Five Star MIDC, Kagal, Kolhapur, MH - 416236, India Elcom International Pvt. Ltd. www.elcom-in.com				
						CHK	29.05.19	KAK/PPD					
						DRN	29.05.19	SSD					
REV	IS	WAS	DATE	SIGN	APP.	BY	DATE	SIGN					
UNSP.TOLERANCE				DIMNS. IN	WT(Gm)	SCALE:-		PROJECTION	SHEET		DRAWING NUMBER		
OVER	-	1	10	mm	Max.	NTS.			1 OF 2		P E M I 9 0 2 D		
UP TO	1	10	-	Moulding, plating details as per Bill of Material Unspecified colour is Black, GF:Glass filled.								REVISION	
±	0.2	0.3	0.5									R0	

PRODUCT DATA SHEET

SPECIFICATION TABLE:-


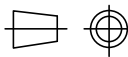
SR.NO.	PARAMETER		SPECIFICATION
1	V/A Rating		10A 250V AC
2	Contact Resistance (Initial)		20 mohms max.
3	Insulation Resistance At 500 V DC		1000 Mohms min.
4	H.V.Break Down Test (For 1-Minute)		2 KV AC
5	Mounting		Panel, Screw-type
6	Terminals		Solder-type / Fast-On
7	Permissible Temp.	(a) With/Without Load	-25°C To 70°C
		(b) For Soldering	270°C for 5 Sec. max.
8	Material	(a) Body	Nylon-6, GF20%, V-2
		(b) Terminals	Brass, Tin/Nickel plating
		(c) Contacts	Copper Alloy, Tin/Nickel plating
9	Reference Standards		IEC 60320-1, IEC 60127-6
10	Approvals		

ORDERING CODE:-



EXAMPLE :-

1)EMI-21-DF-T4B

						PRODUCT : MAINS INLETS			CODE : EMI-21-DF-X			
						APP	29.05.19	GJG	 Plot E-4, Kagal Five Star MIDC, Kagal, Kolhapur, MH - 416236, India Elcom International Pvt. Ltd. www.elcom-in.com			
						CHK	29.05.19	KAK/PPD				
						DRN	29.05.19	SSD				
REV	IS	WAS	DATE	SIGN	APP.	BY	DATE	SIGN				
UNSP.TOLERANCE			DIMNS. IN	WT(Gm)	SCALE:-	PROJECTION	SHEET	DRAWING NUMBER				
OVER	-	1	10	mm	Max.	NTS.		2 OF 2	P E M I 9 0 2 D			REVISION
UP TO	1	10	-	Moulding, plating details as per Bill of Material Unspecified colour is Black, GF:Glass filled.								R0
±	0.2	0.3	0.5									