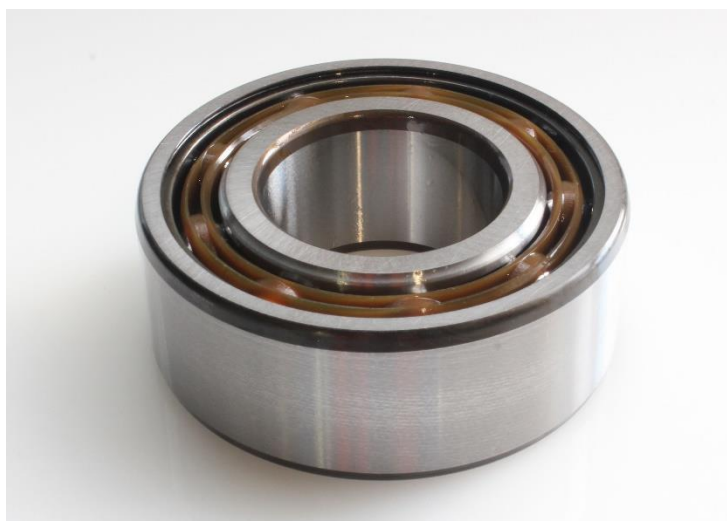


Datasheet

RS PRO Double Row Angular Contact

Stock No. 2058800



Technical Specifications:

Id (mm)	45
Od (mm)	85
Width (mm)	30.2
Material	Steel

Features & Benefits:

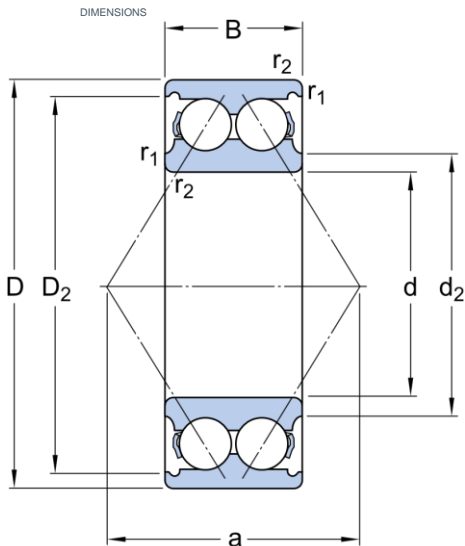
Double row angular contact ball bearings come with a built in 30° contact angle on each row. The contact angles extend beyond the limits of the bearing, allowing axial and radial loads in either direction.

The design improves rigidity of the bearing as the contact angle centres extend beyond the bearing limits.

Installation is much quicker and easier than trying to assemble a pair of bearings as only one bearing needs to be installed.

Sealed and Shielded options are available to help keep out unwanted contamination and retain vital lubrication.

Dimensional line drawings



d	45 mm
D	85 mm
B	30.2 mm
d ₂	≈ 52.8 mm
D ₂	≈ 77.1 mm
r _{1,2}	min. 1.1 mm
a	46 mm