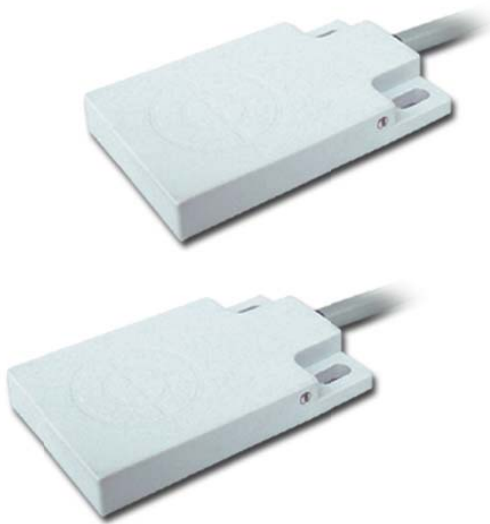




ENGLISH

Product Datasheet

Capacitive Sensor



Stock No. 8967282

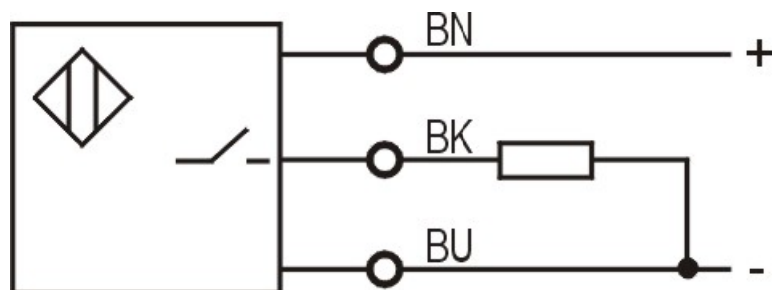
Feature Description

- ◆ Wide range of detecting object: metal, plastic, liquid
- ◆ Surge, reverse polarity protection
- ◆ Housing material : PBT
- ◆ Protection degree : IP67 (IEC)

Features

Mounting	Non-flush
Sensing range Sn	8mm
Setting distance	0...6.48mm
Housing Size	30mm*50mm*7mm
Output	PNP NO
Power supply	10...30VDC
Standard target	Fe 30*30*1t
Temperature drifts	≤±20%
Hysteresis	3...20%
Repeat accuracy	≤3%
Load current	≤200mA
Residual voltage	≤2.5VDC
Consumption current	≤15mA
Protection circuit	Surge and reverse polarity protection
Indicator	Yellow LED
Ambient temperature	-10...55°C
Ambient RH	35-95%RH
Frequency	60Hz
Dielectric strength	1000V/AC 50/60Hz 60s
Insulation resistance	≥50MΩ (500VDC)
Anti-vibration	1.5mm amplitude at 10 to 55Hz for 2hours each in x, y, z D-D
Protection degree	IP67
Housing material	PBT
Connection	PVC Cable 2m

Connection diagram



Note: Customize for cable length, housing material and shape.

Dimension (mm)

