



Designed in Belgium

# Moerman Tools & Accessories

## Designed for Professionals

### Premium Microfiber Sleeve



- ✓ Made for professionals
- ✓ Dip only once to clean multiple windows
- ✓ Superior water absorption
- ✓ Machine washable
- ✓ Long-lasting
- ✓ Scrubbing bits at corner

### Outdoor Sleeve with Scrubbing Pad



- ✓ Designed for external window cleaning and scrubbing
- ✓ Unique design with **blue abrasive cleaning pad** to remove dirt effectively
- ✓ Tough and durable
- ✓ Machine washable
- ✓ Long-lasting

### Specifications

Item	Premium Microfiber Sleeve 35 cm	Outdoor Sleeve with Scrubbing Pad 35 cm
SKU No.	2252-Z-22560	2252-Z-21515
Colour	Turquoise	White + Blue Scrubbing Pad
Cleaning Power	Superior	Standard + Dirt Remove
Material (Plush Face)	100% Polyester Microfiber	80% Acrylic, 20 % Polyester
Material (Backing)	70% PES, 30% Hot Melt	100% Polyester
Fiber Length	16 mm	17 mm
Scrubbing Pad	Yes (at corner)	Yes (across sleeve)
Weight	1045 g/m <sup>2</sup>	1050 g/m <sup>2</sup>
Fastener	Velcro	Velcro
Available Size	35 cm	35 cm
Machine Wash Temperature	60 <sup>o</sup> C	60 <sup>o</sup> C

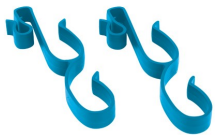
# MOERMAN CLEANING TOOLS

## Moerman Window Bucket



- ✓ Large capacity of 25 L
- ✓ Strong & durable construction
- ✓ Ergonomic handle
- ✓ Accommodate up to 45 cm T-bars / washers and squeegees
- ✓ Easy movement with caster wheels as standard

### SUPPLIED COMPLETE WITH



Double Tool Holder



Casters



Double Tool Holders can hold Squeegee and 2 x Washers

Item	SKU No.
Moerman Window Bucket	2252-Z-19766
Double Tool Holder	2252-Z-17836
Casters (Set of 4)	2252-Z-17837

## Moerman Handy Countertop Squeegee



- ✓ Unique green natural rubber blade is produced with materials approved by FDA
- ✓ Safe for food environment & health care facilities where hygiene is important
- ✓ Ergonomic & comfortable grip
- ✓ Superior cleaning results
- ✓ Longer lasting squeegee



# Moerman Telescopic Extension Pole



2252-Z-17823

2252-Z-21767

Extendable from 1.2 m to 3 m

Extendable from 3 m to 9 m



### Locking Parts / Pole

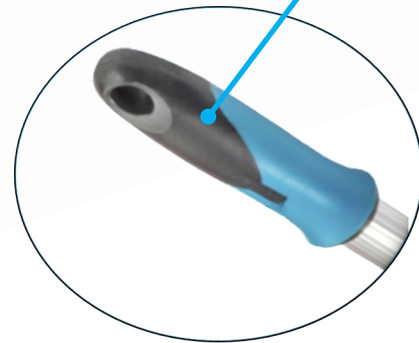
- Improved design
- Better lock & grip
- Quality aluminium pole



2252-Z-18572

### Locking Cones

- Secure locking mechanism
- Strong & durable
- Lightweight



### Bi-Component Handle

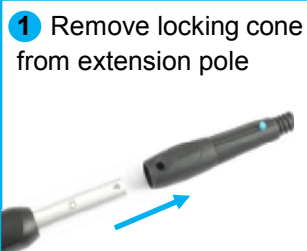
- Anti-slip material
- Secure grip even when wet

## Angle Adapter

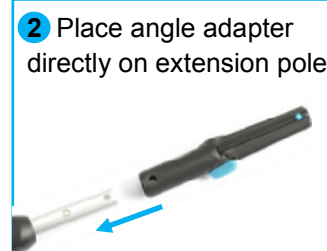


2252-Z-22302

- ✓ Durable & lightweight
- ✓ Fits perfectly on the Moerman telescopic handle
- ✓ Easier to clean hard to reach places
- ✓ Easy to use



1 Remove locking cone from extension pole



2 Place angle adapter directly on extension pole



3 Insert tools easily with the click system

Easy to swivel and block in any position

# MOERMAN CLEANING TOOLS

## Moerman Belt & Tool Holder



### BELT



2252-Z-17834

- Solid belt with clip lock for quick fastening
- Extra loops
- Tough nylon - durable

### TOOL HOLDER



2252-Z-17833

- Strong & durable
- Left / right handed
- Impact-resistant
- Swivel stop - tool cannot fall out

## Moerman Pouch



2252-Z-19765

- ✓ Durable nylon pouch
- ✓ 3 compartments - dry & wet cloths can be stored separately
- ✓ Built-in bottle holder
- ✓ Front pocket with flap and velcro fastener
- ✓ 32 cm x 29 cm (12.6" x 11.4")

### CAN BE USED WITH MOERMAN BELT

