

ergotron[®]

moving you forward

DS100 Desk Stands

- View multiple monitors simultaneously with patented Paraview Technology
- Position your monitors for maximum comfort and productivity
- Portrait or landscape viewing
- Weight capacity up to 31 lbs (14 kg) per monitor
- Low-profile base saves desk space
- Durable aluminum and steel construction creates extremely stable platform
- Cable management system organizes and routes cables
- Easily attaches to LCDs that are VESA[®] MIS-D, 100/75, C compliant
- Five-year warranty



A MULTI-DISPLAY VIEWING STATION THAT
INCREASES PRODUCTIVITY AND SAVES SPACE!

Conserve desk space by suspending up to four flat panel monitors on a single base. Easily view multiple screens at once to increase productivity. Choose between five configurations, or customize your own solution with the DS100 line of modular component parts.

Free standing, desk clamp and grommet mount bases are available.

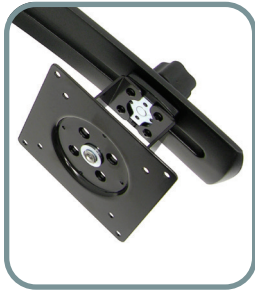
DS100 Desk Stands



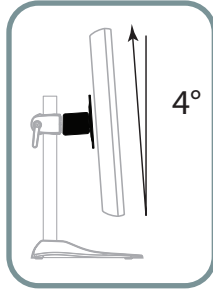
CABLES ARE GUIDED CLEANLY THROUGH CABLE CHANNELS



MONITOR HEIGHT CAN BE ADJUSTED ON POLE (33-091-200 SHOWN). 28" POLE (20-137-200) ALSO AVAILABLE, ORDER SEPARATELY.



MONITORS CAN BE ALIGNED INTO A SEAMLESS CURVED PROFILE TO BENEFIT VIEWING.



MONITOR SHOWN INSTALLED WITH 4° UPWARD ANGLE



SLEEK, LOW-PROFILE BASE WITH DURABLE FINISH PROVIDES STABILITY AND SAVES SPACE.

SET-UP OPTIONS

Multiple monitors can be arranged in a parabola with Ergotron's patented Paraview Technology. This layout increases data visibility, maintains a single focal length for viewer's eyes (less work for eye muscles) and utilizes available space efficiently. Install monitors with 4° offset: position them inward, upward or downward for optimized viewing conditions. Monitors can be adjusted to different heights on the pole to accommodate user preference.

Additional components available



DS100 Dual-Monitor Desk Stand Horizontal



DS100 Dual-Monitor Desk Stand Vertical



DS100 Triple-Monitor Desk Stand Horizontal



DS100 Quad-Monitor Desk Stand

Part # (color)	33-322-200 available Americas, EMEA (black)	33-091-200 (black)	33-323-200 available Americas, EMEA (black)	33-324-200 (black)
Includes	Base, 14" pole, Paraview bow, two (2) sliding brackets. Grommet mount base also available (60-350-200), order separately.	Base, 28" pole. Grommet mount base also available (60-350-200), order separately.	Base, 14" pole, Paraview bow, two (2) sliding brackets, one (1) angled center bracket, one (1) flat center bracket. Grommet mount base also available (60-350-200), order separately.	Base, 28" pole, two (2) Paraview bows, four (4) sliding brackets. Grommet mount base also available (60-350-200), order separately.
Typical LCD Size	≤ 24" Maximum LCD outside width 23¼" (59 cm)	≤ 24"	≤ 21" (53 cm) Maximum LCD outside width 20" (51 cm)	≤ 24" Maximum LCD outside width 23¼" (59 cm)

LCD SIZE IS APPROXIMATION. DIMENSION IS DIAGONAL MEASUREMENT OF SCREEN. LCD SIZE MAY BE EXCEEDED AS LONG AS SCREEN WEIGHT DOES NOT EXCEED MAXIMUM WEIGHT CAPACITY OF THE MOUNT.

Weight Capacity	31 lbs (14 kg) per LCD	23 lbs (10,4 kg) per LCD	31 lbs (14 kg) per LCD	31 lbs (14 kg) per LCD
Tilt	—	180°	—	—
Pan	—	180°	—	—
Rotation	360°			
VESA	VESA FDMI, MIS-D, 75/100, C (hole pattern: 100 x 100 mm & 75 x 75 mm)			
Shipping Weight	15 lbs (6,8 kg)	16 lbs (7,3 kg)	20 lbs (9 kg)	24 lbs (10,9 kg)
Shipping Dimensions	32" x 14" x 6.75" (81,3 x 35,6 x 17,2 cm)	28" x 16" x 7.5" (71,1 x 40,6 x 19,1 cm)	31" x 16" x 9" (78,7 x 40,6 x 22,9 cm)	32" x 15" x 7" (81,3 x 38,1 x 17,8 cm)
Warranty	5 years			

Download additional resources at ergotron.com.

For more information:

NORTH AMERICA: 800.888.8458 / +1.651.681.7600 / insidesales@ergotron.com

EMEA: +31.33.45.45.600 / info.eu@ergotron.com

APAC: apaccustomerservice@ergotron.com

Custom: custom@ergotron.com

© Ergotron, Inc. 1113.2023

Literature made in the U.S.A.

Content subject to change.

Ergotron devices are not intended to cure, treat, mitigate or prevent any disease.

Patent information available at www.ergotron.com/patents.

