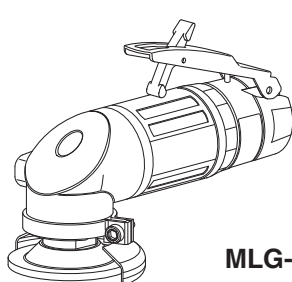


INSTRUCTION MANUAL

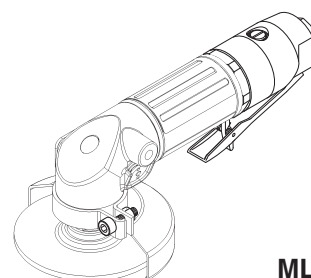
PNEUMATIC ANGLE GRINDER

Please read this manual carefully before you attempt to use your tool so that you may use it properly and safely.

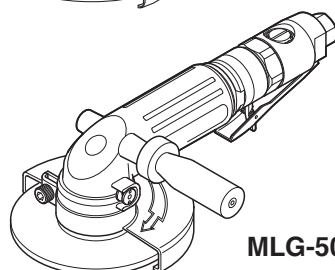
MYTON Model MLG-25, MLG-40, MLG-50, MLG-70 PROFESSIONAL TOOL



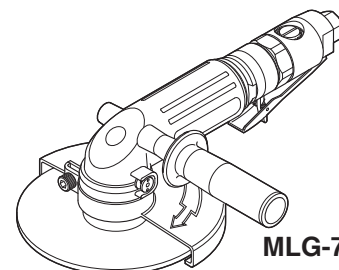
MLG-25



MLG-40



MLG-50



MLG-70

Specifications

Model			MLG-25	MLG-40	MLG-50	MLG-70
Maximum Operating Pressure		MPa	0.6			
Air Consumption	(No Load)	m ³ /min	0.42	0.45	0.7	0.7
Maximum Power		W	210	710	1,100	1,100
Rated Speed (No Load)		r/min(min ⁻¹)	19,000	13,000	11,000	7,600
Depressed Center Grinding Wheel	Diameter	mm(inch)	58 (2-9/32)	100 (4)	125 (5)	180 (7)
	Hole	mm(inch)	9.6 (3/8)	16 (5/8)	22 (7/8)	22 (7/8)
Mass (Weight)		kg	0.6	1.4	2.5	2.5
Sound Pressure Level		dB(A)	90	88	89	89
Sound Power Level		dB(A)	95	99	100	100
Vibration Level [Uncertainty K]	Body	m/s ² [m/s ²]	≤ 2.5 (1.8 [0.83])	6.3 [1.10]	3.6 [0.85]	3.8 [0.87]
	Handle	m/s ² [m/s ²]	—	—	4.1 [0.90]	6.2 [1.10]
Thread Size of Air Inlet			Rc1/4	Rc3/8	Rc3/8	Rc3/8

Due to continuous product development/improvement the specifications and configurations in this document are subject to change without prior notice.



Manufactured by :

NITTO KOHKI Co., Ltd.
2-9-4, Nakaikegami, Ohta-ku,
Tokyo, 146-8555, Japan
TEL : (81)-3-3755-1111
FAX : (81)-3-3753-8791
E-mail : overseas@nitto-kohki.co.jp
URL : www.nitto-kohki.co.jp

Keep the manual handy – so you can use it whenever necessary.

Original Instructions

Thank you very much for your purchase of this **Nitto Kohki product**.






Before using your tool, please read this manual carefully so that you may use it properly to get the most out of it.

Please keep the manual handy - so you can use it whenever necessary.



- **English** : Please ask your dealer or distributor for instruction manual in local language(s).
- **German** : Bitte fragen Sie Ihren Händler nach eine Betriebsanleitung in Landessprache.
- **French** : S'il vous plait, veuillez demandez à votre fournisseur de manuel instruction en langue locale.
- **Spanish** : Por favor, contacte con su distribuidor para el manual de instrucciones en español.
- **Portuguese** : Por favor pessa ao seu agente ou distribuidor o manual de instruções em linguagem local.
- **Italian** : Per Manuale Istruzioni in lingua locale Vi preghiamo di rivolgerci al rivenditore o distributore.
- **Dutch** : Vraag uw handelaar om een nederladstalige gebruiksaanwijzing.
- **Swedish** : Be er lokala Åtreförsäljare eller distributör om manualer på svenska.
- **Danish** : Venligst henvend Dem til den danske distributør for instructions manualer.
- **Polish** : Proszę pytać swojego dealera lub dystrybutora o instrukcje obsługi w języku lokalnym.
- **中文** : 請向當地供應商或經銷商詢問中文使用說明書

CONTENTS	page
IMPORTANT SAFETY INSTRUCTIONS	2
GENERAL: TOOLS	2
GENERAL: PNEUMATIC TOOLS	3
INSTRUCTIONS FOR THIS TOOL	4
1. USAGE	5
2. CHECK THE CONTENTS OF THE PACKAGE	5
3. NAME OF PARTS	5
4. AIR SUPPLY	6
5. PREPARATION (MLG-50, MLG-70)	6
6. GRINDING WHEELS	6
7. MOUNTING AND REMOVING GRINDING WHEEL ...	7
8. HOW TO OPERATE THE TOOL	8
9. STORAGE	9
10. MAINTENANCE	9
11. ORDERING SERVICE PARTS	10
12. EXPLODED DIAGRAM : MLG-25	11
13. EXPLODED DIAGRAM : MLG-40	12
14. EXPLODED DIAGRAM : MLG-50	13
15. EXPLODED DIAGRAM : MLG-70	14

PICTOGRAM

-  Warning: It might be dangerous to operate the tool if the instructions supplied are not followed.
-  Using this tool improperly could result in serious injury. Read the instruction manual before using.
-  Always wear suitable eye protection.
-  Always wear suitable hearing protection.
-  Always wear respiratory protective equipment (PPE).

The following Safety notations are used throughout the manual to highlight safety precautions for the user and for the tool.

	WARNING:	Indicates a potentially hazardous situation which, if not avoided by following the instructions given, could result in death or serious injury.
	CAUTION:	Indicates a potentially hazardous situation which, if not avoided by following the instructions given, could result in injury or material damage.

Please note, however, that failure to observe safety precautions under the “**Caution**” category could result in a serious occurrence depending on the situation: please observe all safety precautions in the manual.

Caution: Important precautions for tool setup, operation and maintenance.

IMPORTANT SAFETY INSTRUCTIONS

When using the tool, please observe the safety precautions below to prevent possible accident or injury.

GENERAL: TOOLS

WARNING

TO OPERATORS

- **Wear proper clothing for the type of work being done.**
Take care to avoid entanglement with the moving parts of the tool with clothing, ties, hair etc. If items become entangled it will cause the operator to be pulled towards the tool and lead to possible cause of accident or injury.
- **Always wear suitable eye protection.**
Remember, regular glasses are not safety glasses. The lenses are only shock resistant, which will not give you sufficient eye protection you may need in your working environment.
- **Always wear suitable hearing protection.**
- **Wear respiratory protective equipment (PPE).**
Wear respiratory protective equipment (PPE) when working in an environment where dust particles are generated in operation.
- **Avoid working posture that is too stressful.**
Always ensure a firm footing and well balanced posture.
- **Do not operate the tool if you are too tired.**
- **Never touch any moving parts of the tool when running.**

ABOUT WORK AREA

- **Keep the work area clean.**
Cluttered work areas (e.g. workbench) invite accidents.
- **Carefully select the work area.**
Do not expose tool to rain.
Do not use tool in a wet or soaked area.
See that the work area is adequately illuminated.
- **Never work near inflammable liquid or in a potentially explosive atmosphere.**
- **Keep children away from the work area.**
Keep children and unauthorized people away from the work area to avoid accident or injury.
- **Some tools generate high noise levels.**
Check to be sure that the use of this tool conforms to all local noise regulations.

BEFORE OPERATION

- **Inspect tool before use.**
Before using, check that screws are securely tightened, that any protective cover or guard is securely in place, other parts are free from damage and that the tool runs as it should.
Check that moving parts are properly adjusted for positioning and tightened, that parts are free from damage and properly mounted, and that all other parts are in good condition for normal operation.
Should you find any damage to the protective cover or other part, replace it in accordance with the Operation Manual. If there are no instructions in the Manual, please contact the sales agent through which you have purchased your tool or an authorized dealer near you for repair.
Likewise, if a switch failure occurs, contact sales agent through which you have purchased your tool or an authorized dealer near you for repair.
Do not use the tool if it does not start or stop with the start/stop switch.
- **Securely mount cutter**
An improperly mounted cutter may fly out, causing possible damage to the tool or injury to the operator.
- **Always remove spanner, wrench, etc., once adjustment has been made with them.**
- **Use a tool appropriate for the application.**
Avoid heavy-duty application that is beyond the capacity of tool.
- **Do not use the tool for purposes other than what it is designed for.**
- **Do not abuse tool.**
Use tool in accordance with the specifications: you'll get the most out of it while ensuring safety.
- **Securely fasten workpiece in place.**
Use a vice or clamp to securely fasten the workpiece in place. It is much safer this way than holding it in your hand, allowing you to operate the tool with both hands.

ABOUT HANDLING

- **How to store tool.**
When the tool is not used, store it in a dry area and out of reach of children.
- **How to carry tool.**
Do not touch the start switch while the tool is being carried.
- **Do not leave the tool unattended while it is running.**
Turn off the start switch and disconnect the tool from power source. Do not leave the work area until the

tool comes to a complete stop.

MAINTENANCE/SERVICE

- **Do not take apart or modify tool.**

Disassembly or modification carried out without the supervision of a qualified or authorized service engineer could result in an accident or injury.

- **Inspect cutting tool and accessories, etc.**

Always check to see that cutting tool and accessories, etc. are in good operating condition without damage or deterioration before you mount them on the tool. Should you find any damage to an accessory or part, please contact sales agent through which you have purchased your tool or an authorized dealer near you for repair.

- **Check parts for damage.**

When you have found damage to accessory or other part, carefully check the damaged part to determine the extent of influence it has upon the functions of the tool – that is, determine whether it can still perform its normal functions.

Check to see that the linkage of the moving parts is OK, that all parts are OK without damage, that they are properly mounted, and that the tool functions normally. Should you find any damage to an accessory or part that may hamper proper functioning of the tool, please contact sales agent through which you have purchased your tool or an authorized dealer near you for repair.

- **Have your tool repaired at an authorized Nitto Service Center.**

For repair or parts replacement, please contact the sales agent through which you have purchased your tool or an authorized dealer near you.

- **Use only Nitto genuine parts.**

Use of improper parts may result in serious occurrence.

To obtain a Nitto genuine part, consult this Manual or contact the sales agent from which you have purchased your tool directly.

- **Do not detach label or nameplate from tool.**

When a label/nameplate gets damaged, worn or becomes missing, contact the sales agent through which you have purchased your tool or Nitto Kohki Co. Ltd, directly for a replacement.

DISPOSAL

- When a tool is taken permanently out of service, it is advised that the tool is disassembled, degreased and parts separated by material and recycled locally in the appropriate manner.

GENERAL: PNEUMATIC TOOLS

WARNING

- **Use appropriate air pressure.**

Excessively high air pressure will increase the number of revolutions or strokes causing not only potential premature failure/breakage but could also lead to an unexpected accident or injury.

- **Connect tool to air supply line.**

There are various types of pipes running in a factory in addition to the pneumatic line (such as oxygen, nitrogen, gas and water). For this reason, always ensure that you are connecting to the pneumatic line.

- **Start tool properly.**

Turn the start switch OFF before connecting to the air supply line.

- **Always disconnect the tool from the air supply line before putting on/taking off any accessory and prior to carrying out any maintenance work.**

- **Avoid exposure to exhaust air.**

Pneumatic tool exhaust air contains oil and contaminated moisture. Make sure the exhaust air is not directed towards your face or anyone else within the work area.

- **Keep tool off electricity.**

This pneumatic tool is not electrically insulated. To avoid a potential electric shock do not use where there is a possibility of coming into contact with live electricity.

CAUTION

- **Handle tool carefully.**

Abusive use of tool could invite failure or accident. Do not throw, drop or shock the tool.

- **Handle connecting hose carefully.**

Do not carry the tool by the air hose. Do not pull the air hose to disconnect.

INSTRUCTIONS FOR THIS TOOL

About Your Tool

WARNING

- **Protect your body from the chips/filings.**
Hot chips/filings may fly out from the work piece. Always wear safety glasses, dust mask, earplugs, gloves (except knitted gloves) and long-sleeved garment.
Keep your face well away from the work piece.
- **Always use a Grinding Wheel with a maximum operating speed (m/s) rating equal to or exceeding the labeled speed of the tool. Make sure the dimensions of the Grinding Wheel you are using is applicable to the specification of the grinder.**
- **Make sure there are no cracks, chips or damage to the Grinding Wheel prior to use. Do not use any wheels wet or without labels.**
- **Use Nitto Kohki's Wheel Flanges only. However, do not use any of them which have cracks, chips or worn. Do not use the alternative flanges or flat washers.**
- **Make sure if the Grinding Wheel is adaptable to the Wheel Flanges.**
Do not use reducing bushing to meet the Wheel Lock unless they are supplied by the Grinding Wheel manufacturer.
- **Make sure there are no cracks, distortion or wear marks on the thread of the Spindle or Wheel Lock.**
The label on the wheel has to be the same or bigger diameter than that of a Spindle.
- **Make sure if there is any cracks, distortion or worn on a thread of a Spindle or Wheel Lock.**
Do not use the grinder if you ever find one.
- **Do not use the side of the Grinding Wheel (except for specific side use Grinding Wheels)**
- **Always use the Wheel Guard for the grinder if the maximum diameter of the Grinding Wheel is over 50mm.**
- **Use the Wheel Guard provided.**
Failure to do so could result in injury.
- **Replace damaged, bent or severely worn Wheel Guard. Do not use any Wheel Guard which can damage the Grinding Wheel.**
- **Air pressure for the grinder must not exceed 0.6MPa (6kgf/cm²).**

- **Do not start or stop grinders suddenly.**
Open a Throttle Lever gradually when you start operation.
- **After a grinder has been repaired and returned, check the no load speed with a tachometer before you use to make sure its actual speed at 0.6MPa (6kgf/cm²) does not exceed the rated speed printed on the Wheel Guard. Do the same check after each stage of the work process of work even in normal use. Set the Adjust Valve to the maximum speed position when you check the no load speed.**
- **Only qualified/trained operators should attach or replace Grinding Wheels as well as checking/testing them.**
- **Release the Throttle Lever when air supply is stopped.**
- **Make sure no one is around grinding circumferences before trial running.**
- **Run a trial for a minute before start grinding and for three minutes after replacement of Grinding Wheels to make sure there is no problem on the grinder.**
- **Grind slowly until the Grinding Wheels get warmer in case Wheels seem cold at the start.**
- **Always operate the grinder at the correct angle. (15°~30°) . (Fig.1)**

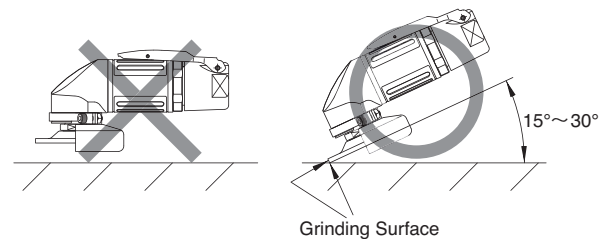


Fig. 1

- **Do not put any inflammable liquid or use the grinding tool in a potentially explosive atmosphere as there is a possibility of sparks when grinding which could cause a fire/explosion.**

1. USAGE

This tool is for grinding workpieces using a Type 27 Depressed Center Grinding Wheel.

2. CHECK THE CONTENTS OF THE PACKAGE

Check the contents and make sure that the tool does not have any damage which may have occurred during transportation. The contents should correspond to the list as follows. In case of damage/missing parts, please contact the sales agent from whom you purchased the tool.

MLG-25

Package Contents	Qty	Check
MYTON MLG-25	1set	
Grinding Wheel GS #80	1	
Hex. Socket Screw Key 5	1	
Single Ended Spanner 19	1	
Bushing R1/4xNPT1/4	1	
Instruction Manual	1	
Declaration of Conformity	1	
Caution for Use	1	

MLG-40

Package Contents	Qty	Check
MYTON MLG-40	1set	
Hex. Socket Screw Key 6	1	
Bushing R3/8xNPT3/8	1	
Instruction Manual	1	
Declaration of Conformity	1	
Caution for Use	1	

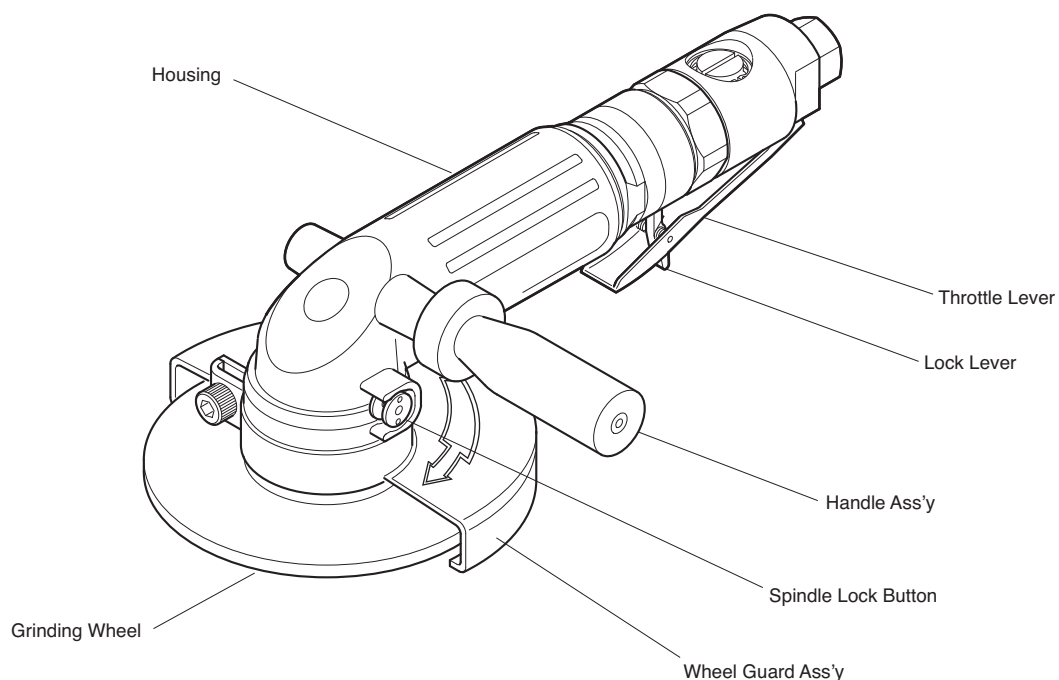
MLG-50

Package Contents	Qty	Check
MYTON MLG-50	1set	
Handle Ass'y	1set	
Wheel Guard Ass'y	1set	
Hex. Socket Screw Key 6	1	
Hex. Socket Screw Key 4	1	
Pin Face Wrench	1	
Bushing R3/8xNPT3/8	1	
Instruction Manual	1	
Declaration of Conformity	1	
Caution for Use	1	

MLG-70

Package Contents	Qty	Check
MYTON MLG-70	1set	
Handle Ass'y	1set	
Wheel Guard Ass'y	1set	
Hex. Socket Screw Key 6	1	
Hex. Socket Screw Key 10	1	
Bushing R3/8xNPT3/8	1	
Instruction Manual	1	
Declaration of Conformity	1	
Caution for Use	1	

3. NAME OF PARTS



4. AIR SUPPLY

⚠ CAUTION

- Draw off drainage before starting operation. If the drainage enters into the tool, it can freeze around the exhaust port of the tool and result in output power reduction.

4-1. Air Pressure

Adjust air pressure to 0.6MPa (or 6 kgf/cm²) with the air regulator. Lower pressure may result in insufficient performance. Higher pressure may result in premature wornout of parts. It is important to maintain the proper pressure with pressure regulator on air line.

4-2. Air Line (Fig.2)

Use a 9.5mm (3/8") I.D. [MLG-25] or 12.7 mm (1/2") I.D. [MLG-40, MLG-50, MLG-70] air hose between the compressor and the tool. Compressed air comes to be cooled down and its drain be separated, as soon as the air leaves the compressor. The drain, however, is condensed in the piping, and can enter into the tool mechanism, and may cause malfunction. So, install an air filter and an oiler between the compressor and the tool.

4-3. oiler

Install an oiler between the compressor and the tool. Use machine oil ISO VG-10 for lubrication and rust prevention. Negligence of the oil supply may cause damages on the tool. Lubricating the tool with high viscosity oil reduces the tool performance.

4-4. Lubrication (Fig.2)

Before starting the tool, disconnect air hose from the tool and supply a few drops of machine oil ISO VG-10 to the air inlet port of the tool. Then reconnect and make idle running for a few seconds so that the oil should reach every part in the tool.

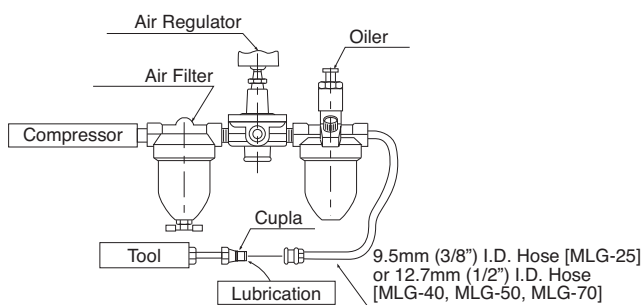


Fig. 2

5. PREPARATION (MLG-50, MLG-70)

Mounting the Handle Ass'y

Screw the Handle Ass'y into the Housing Sub Ass'y. It can be mounted on either right or left side of the Housing Sub Ass'y. Be sure to mount the Handle Ass'y before use.

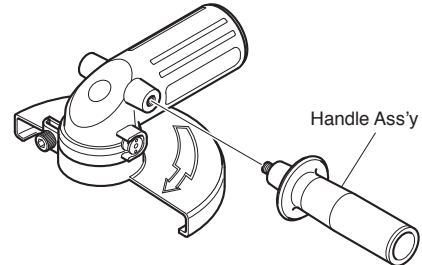


Fig. 3

6. GRINDING WHEELS

⚠ WARNING

The maximum operating speed marked on the Grinding Wheel, blotters, or packaging, shall equal or exceed the rated speed on the grinder.

Use with Type 27 Depressed Center Grinding Wheels.

MLG-25

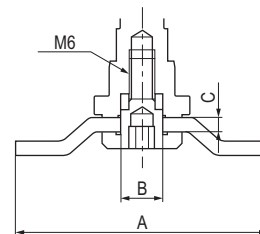


Fig. 4

MLG-40

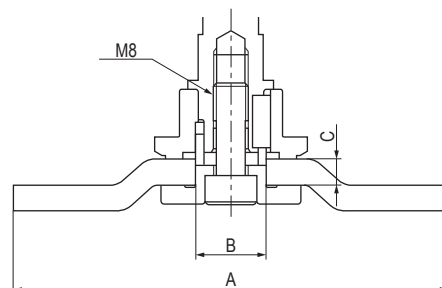


Fig. 5

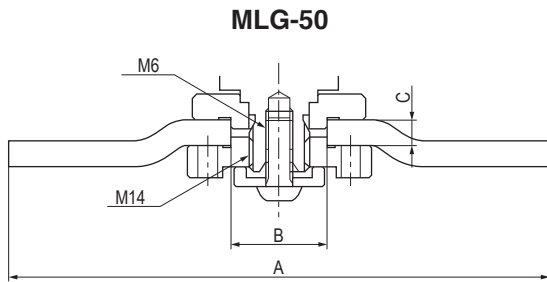


Fig. 6

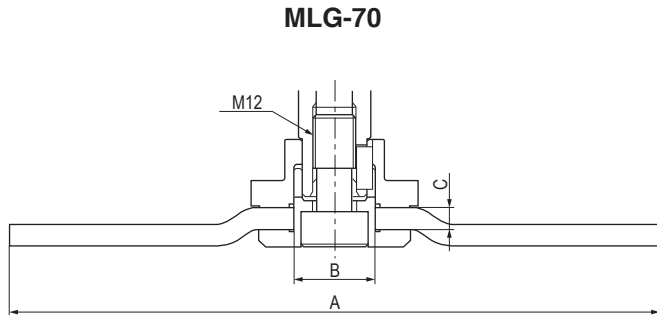


Fig. 7

	MLG-25	MLG-40	MLG-50	MLG-70
A	58mm (2-9/32")	100mm (4")	125mm(5")	180mm (7")
B	9.6mm (3/8")	16mm (5/8")	22mm(7/8")	22mm (7/8")
C	3mm (1/8")	4mm(5/32")	1mm(3/64")	6mm (1/4")
		6.4mm(1/4")	6.4mm(1/4")	8mm (5/16")

A : Diameter of the Grinding Wheel

B : Hole of the Grinding Wheel

C : Thickness of the Grinding Wheel

7. MOUNTING AND DISMOUNTING GRINDING WHEEL

⚠ WARNING

Always turn off the air supply and disconnect the air supply hose.

Read and thoroughly understand **IMPORTANT INSTRUCTIONS FOR GRINDER** before carrying out these operations.

7-1. MLG-25

Mounting

1. Hold the Spindle with Spanner supplied.
2. Insert the Outer Flange into the center hole of the Grinding Wheel.
3. Secure it firmly to the Spindle by tightening the Outer Flange with Hex. Socket Screw Key.

Removal

Hold the Spindle with Spanner and loosen Outer Flange with Hex. Socket Screw Key to remove the Grinding Wheel.

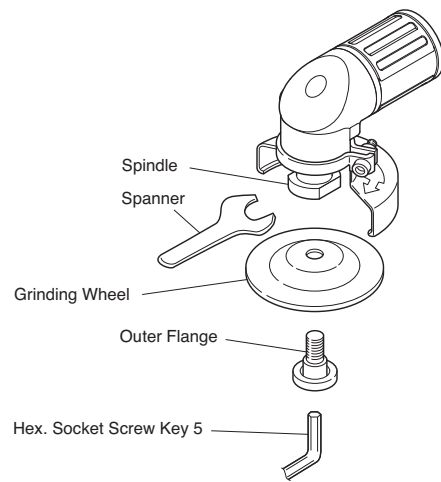


Fig. 8

7-2. MLG-40, MLG-70

Mounting

1. Insert the Outer Flange into the center hole of the Grinding Wheel.
2. While depressing the Spindle Lock Button lightly, place the Driving Flange on the Spindle and rotate it until it comes to stop, then push the Spindle Lock Button down to the hilt until comes to lock the position.
3. Align the cutout of the Outer Flange with the Parallel Key on the Spindle, place the set of the Outer Flange and the Grinding Wheel on the Spindle, and tighten it with the accessory Hex. Socket Screw Key. Releasing your hand from the Spindle Lock Button will automatically unlock the Spindle.

Removal

1. While depressing the Spindle Lock Button lightly, rotate the Grinding Wheel with your hand until it comes to stop, and then deeply push the Spindle Lock Button down to the hilt until comes to lock the position.
2. Loosen the Disk Lock Bolt with the accessory Hex. Socket Screw Key, and remove the Grinding Wheel.

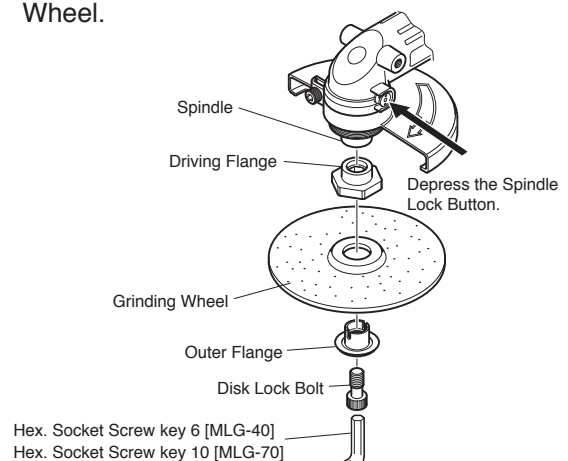


Fig. 9

7-3. MLG-50

Mounting

1. Hold the Spindle with pushing the Lock Button.
2. Insert the Driving Flange into the Spindle to fit the convex on the Spindle and groove of Driving Flange.
3. Insert the Grinding Wheel and Outer Flange into the Spindle.
4. In case the thickness of the Grinding Wheel is 4mm or less, attach the Outer Flange up side down.
5. Secure it firmly to the Spindle by tightening the Outer Flange with Pin Face Wrench.
6. Secure Washer and Hex. Socket Button Head Screw 6x15 firmly to the Spindle by tightening the Socket Button Head Screw 6x15 with Hex. Socket Screw Key.

Removal

1. Hold the Spindle with pushing the Lock Button.
2. Loosen the Hex. Socket Button Head Screw 6x15 with Hex. Socket Screw Key and remove the Washer.
3. Loosen the Outer Flange with the Pin Face Wrench.

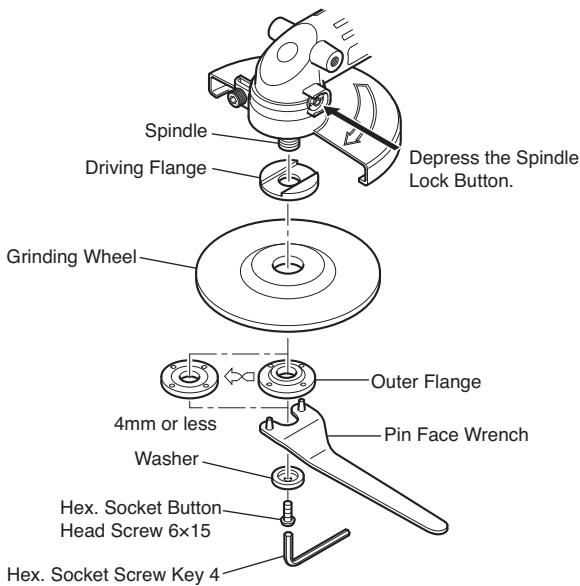


Fig.10

8. HOW TO OPERATE THE TOOL

8-1. Start and Stop

To start, release the lock lever and grasp the throttle lever.

To stop, release the throttle lever.

MLG-25

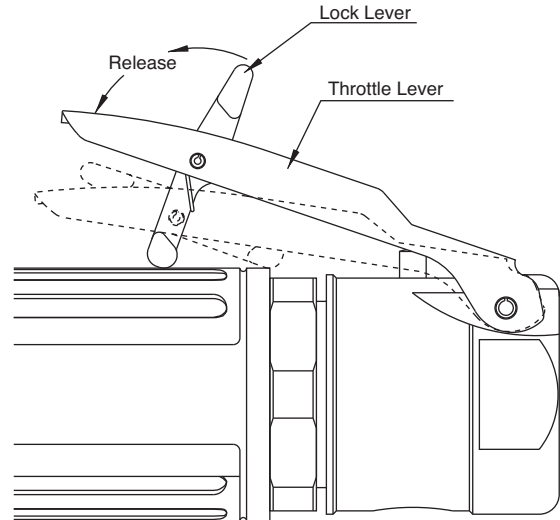


Fig. 11

MLG-40, MLG-50, MLG-70

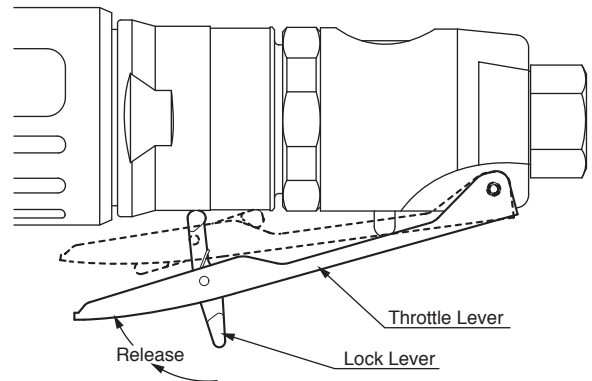


Fig. 12

8-2. Adjust Valve

WARNING

Be sure to keep hands clear of moving parts.

The desired number of rotation between maximum rpm and minimum rpm is obtained by turning the groove of valve clockwise or counterclockwise with screwdriver.

Maximum rotation

Position the groove of Adjust Valve horizontal to main body.

Minimum rotation

Position the groove of Adjust Valve vertical to main body.

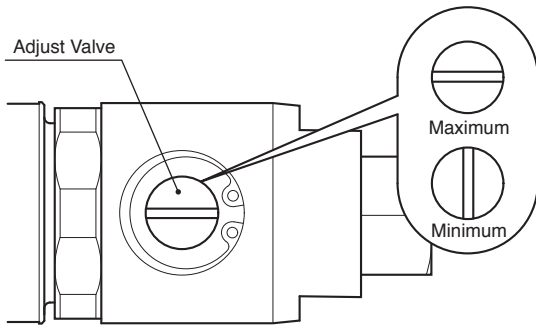


Fig. 13

9. STORAGE

⚠ CAUTION:

When tool is not used, store it out of reach of children.

Avoid storing the tool in a location subject to high humidity. If the tool is left as it is used, residual moisture on the inside can cause rusting. Before storing, and after operation, oil the tool at the air inlet with machine oil ISO VG-10 and run it for a short time.

10. MAINTENANCE

Supply additional appropriate amount of Shell Alvania Grease S#2 into the Gear Case with about once a month interval.

MLG-25

1. Loosen the Screw 4x12 and remove the Exhaust Cover, the Toothed Washer CW-4, the Spacer, the Exhaust Plate, and the Packing Cover.
2. Inject grease with a grease gun into the Grease Port next to the Exhaust Port.

The outside diameter of the nozzle tip of the grease gun must be 3mm or smaller. The nozzle for grease nipple cannot be used for this grease filling, because the shape of the Grease Port is different from that of the nozzle for grease nipple.

3. Before putting back the Exhaust Cover, execute idle running and wipe out excessive grease.
4. For assembly, see Fig.14 and put back the parts in the reverse order of disassembly.

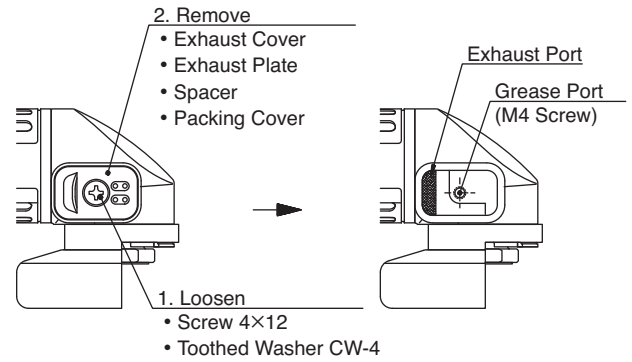


Fig. 14

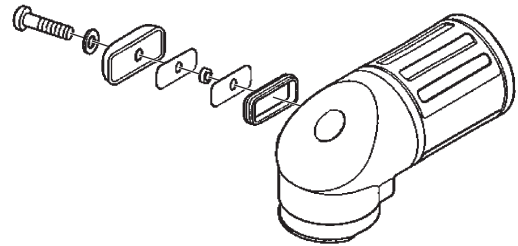


Fig. 15

MLG-40, MLG-50, MLG-70

1. Loosen the Screw and remove the Exhaust Cover, the Toothed Washer CW-4, the Spacer, and the Exhaust Filter.
2. Inject grease with a grease gun into the Grease Port next to the Exhaust Port.

The outside diameter of the nozzle tip of the grease gun must be 4mm or smaller. The nozzle for grease nipple cannot be used for this grease filling, because the shape of the Grease Port is different from that of the nozzle for grease nipple.

3. Before putting back the Exhaust Cover, execute idle running and wipe out excessive grease.
4. For assembly, see Fig.16~19 and put back the parts in the reverse order of disassembly.

MLG-40

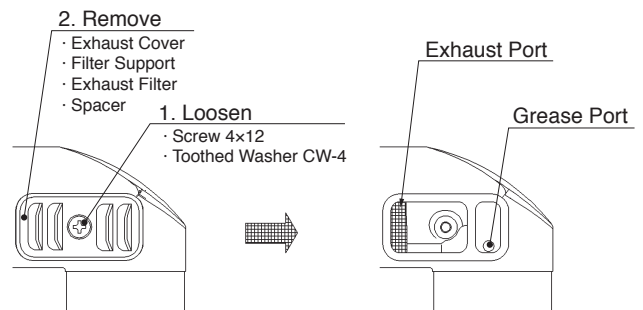


Fig. 16

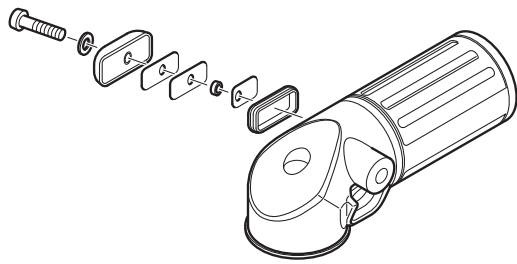


Fig. 17

MLG-50, MLG-70

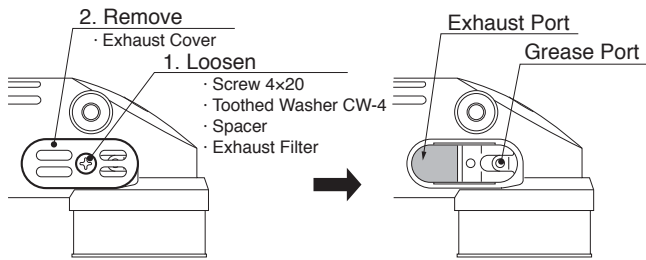


Fig. 18

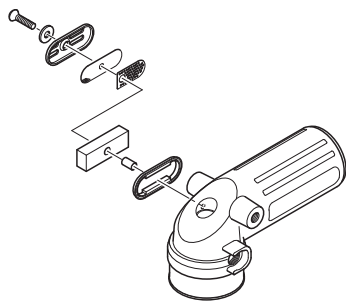


Fig. 19

11. ORDERING SERVICE PARTS

- For further operational and handling information or for replacement of parts and components, contact the company from whom you purchased the tool or an authorized dealer.
- In ordering parts and components give each part number, part name and quantity required.
- Use only NITTO genuine parts.

12. EXPLODED DIAGRAM : MLG-25

WARNING

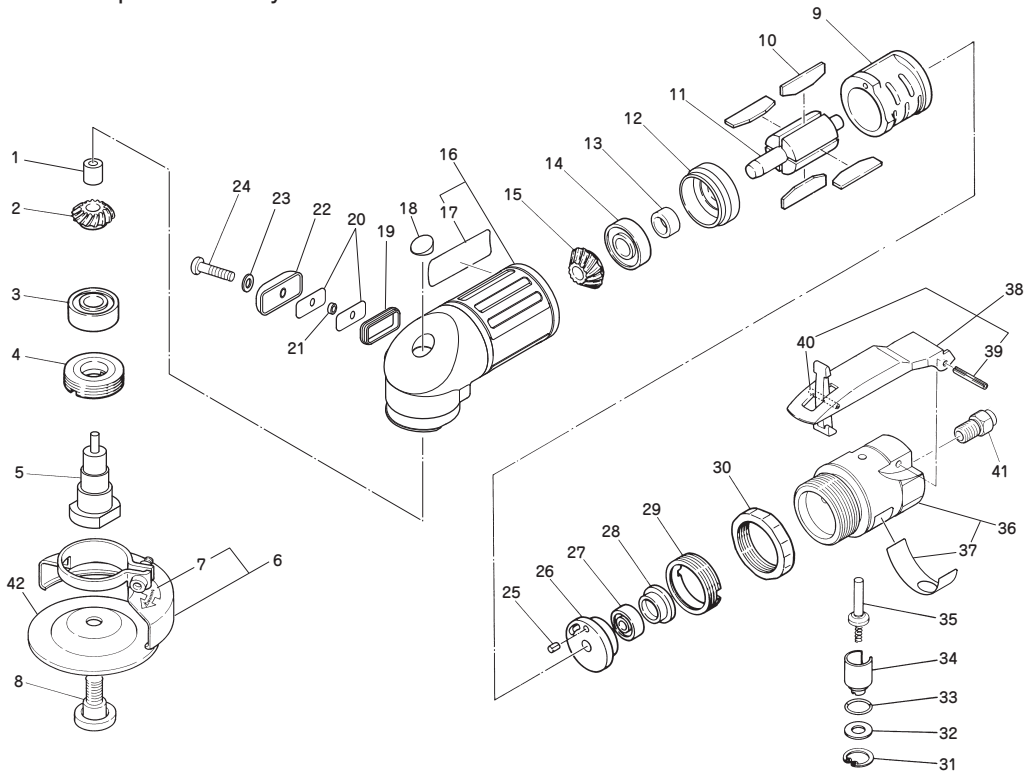
This diagram is for your reference only. Do not attempt to service or repair the Tool.

Do not take the Tool apart. Contact an authorized Nitto dealer for all service and repair of the Tool.

Improper service and repair can cause accidents and service injuries.

Never attempt to modify the Tool.

Never attempt service or repair the Tool yourself.



The part numbers with () are included in the Ass'y parts written above them.

No.	PartsNo.	Description	Qty	Price
1	TQ12638	Needle Bearing BK0609T2	1	
2	TQ12986	Gear 1x22	1	
3	TP00498	Ball Bearing 6001ZZ	1	
4	TB08597	Bearing Set Screw Ass'y	1set	
5	TQ12620	Spindle	1	
6	TB08893	Wheel Guard Ass'y	1set	
7	(TQ13054)	Label Warning Wheel Guard	1	
8	TP17962	Outer Flange	1	
9	TP14222	Cylinder	1	
10	TB08602	Blade Ass'y (4 pcs.)	1set	
11	TP14224	Rotor	1	
12	TQ12622	End Plate B	1	
13	TP06322	Spacer 8x11x3	1	
14	TP00468	Ball Bearing 608ZZ	1	
15	TQ12985	Pinion 1x15	1	
16	TB08892	Housing Ass'y	1set	
17	(TQ13052)	Label Warning CE Mark	1	
18	TQ12628	Plug	1	
19	TQ12649	Packing Cover	1	
20	TQ12630	Exhaust Plate	2	
21	TQ12658	Spacer 4EP-3	1	
22	TQ12629	Exhaust Cover	1	
23	TQ12647	Toothed Washer CW-4	1	
24	TQ12739	Raised Countersunk Head Screw 4x12	1	

No.	PartsNo.	Description	Qty	Price
25	TP00496	Spring Pin 2.5x6 AW	1	
26	TP10109	End Plate A	1	
27	TP03933	Ball Bearing 606ZZ	1	
28	TP10110	Cap	1	
29	TP10098	Lock Nut	1	
30	TP03468	Lock Ring	1	
31	TP03695	Internal Retaining Ring C-12	1	
32	TP06326	Spacer 6x12x1.2	1	
33	TP11997	O-Ring KS-7	1	
34	TP06325	Adjust Valve	1	
35	TA93070	Valve Stem Ass'y	1set	
36	TB08895	Valve Body Sub Ass'y	1set	
37	(TQ13053)	Label Model	1	
38	TB01152	Lever Ass'y	1set	
39	(TP00460)	Spring Pin 3x22 AW	1	
40	(TP05498)	Spring Pin 2x16 AW	1	

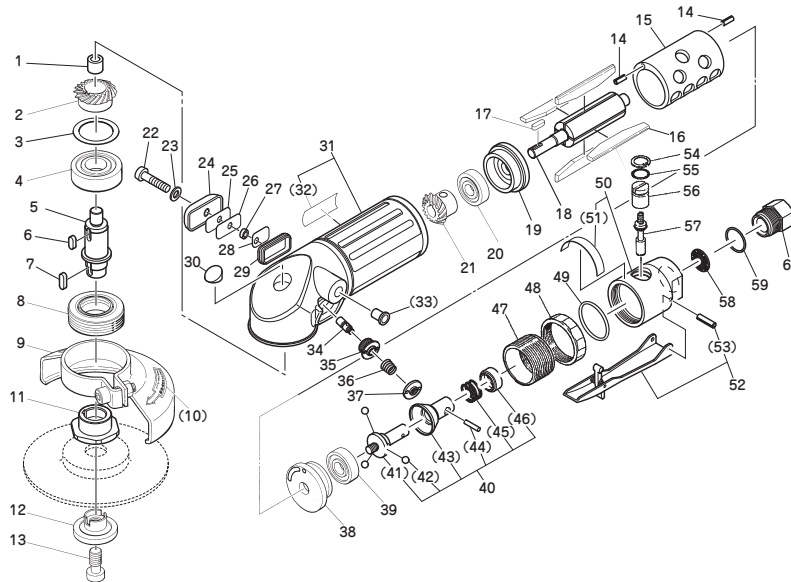
Accessories

No.	PartsNo.	Description	Qty	Price
41	TP02236	Bushing R1/4xNPT1/4	1	
42	-	Grinding Wheel GS#80x58	1	
	TQ12633	Single Ended Spanner 19	1	
	TP04004	Hex. Socket Screw Key 5	1	
	TQ12673	Instruction Manual	1	

13. EXPLODED DIAGRAM : MLG-40

⚠ WARNING

This diagram is for your reference only. Do not attempt to service or repair the Tool.
Do not take the Tool apart. Contact an authorized Nitto dealer for all service and repair of the Tool.
Improper service and repair can cause accidents and service injuries.
Never attempt to modify the Tool.
Never attempt service or repair the Tool yourself.



The part numbers with () are included in the Ass'y parts written above them.

No.	PartsNo.	Description	Qty
1	TQ00893	Needle Bearing BK0810	1
2	TQ12725	Gear	1
3	TQ12887	Plate 13.1x30x1.2	1
4	TP01609	Ball Bearing 6202ZZ	1
5	TQ13048	Spindle	1
6	TP00502	Parallel key Both Ends Round 4x4x9.5	1
7	TQ13516	Grooved Parallel key Both Ends Round 4x4x12	1
8	TB08883	Bearing Set Screw Ass'y	1set
9	TB08918	Wheel Guard Ass'y	1set
10	(TQ02357)	Label Warning for Wheel Guard	1
11	TQ13049	Driving Flange	1
12	TQ00775	Outer Flange	1
13	TP09932	Disk Lock Bolt	1
14	TP04061	Spring Pin 3x6	2
15	TQ13033	Cylinder	1
16	TB08707	Blade Ass'y(4pcs.)	1set
17	TP10130	Parallel key Both Ends Round 3x3x10	1
18	TQ13032	Rotor	1
19	TQ13030	EndPlate B	1
20	TP10133	Ball Bearing 609ZZ	1
21	TQ12726	Pinion	1
22	TQ12739	Raised Countersunk Head Screw 4x12	1
23	TQ12647	Toothed Washer CW-4	1
24	TQ12729	Exhaust Cover	1
25	TQ13038	Filter Support 40	1
26	TQ13039	Exhaust Filter 40	1
27	TQ13036	Spacer 4.3x8x2.8	1
28	TQ13037	Exhaust Plate	1
29	TQ12730	Packing Cover	1
30	TQ12724	Plug 40	1
31	TB08702	Housing SUB Ass'y	1set
32	(TQ12774)	Label Warning CE Marking	1

No.	PartsNo.	Description	Qty
33	(TQ13074)	Plug 7.2	1
34	TQ12542	Lock Pin	1
35	TQ12537	Pin Guide	1
36	TQ12544	Conical Spring 0.6x7.2x8.8x8	1
37	TQ12543	Lock Button	1
38	TQ13029	EndPlate A	1
39	TQ12782	Ball Bearing 699ZZ	1
40	TB08676	Governor Ass'y	1set
41	(TQ12813)	Base	1
42	(CP03282)	Ball 7/32	3
43	(TQ12067)	Sleeve	1
44	(TQ12090)	Needle Roller 2.5x13.8	1
45	(TQ13035)	Spring 1.4x15.5x16.3	1
46	(TQ12068)	Stopper	1
47	TQ12777	Adapter	1
48	TQ12778	Lock Ring	1
49	TQ12780	O-ring JASO-1033	1
50	TB08704	Valve Body Ass'y	1set
51	(TQ12776)	Label Model	1
52	TB08669	Lever Ass'y	1set
53	(TP13893)	Spring Pin 3x22AW	1
54	TP03473	Internal Retaining Ring C-14	1
55	TP11992	O-ring KS-9	1
56	TP04394	Adjust Valve	1
57	TB05591	Throttle Valve Ass'y	1set
58	TP01658	Filter	1
59	CP25821	O-ring JASO-1020	1
60	TQ12671	Bushing M23xRc3/8	1

Accessories

No.	PartsNo.	Description	Qty
	TP00170	Hex.Socket Screw Key 6	1
	TQ12673	Instruction Manual	1
	TQ02350	Bushing R3/8xNPT3/8	1

14. EXPLODED DIAGRAM : MLG-50

WARNING

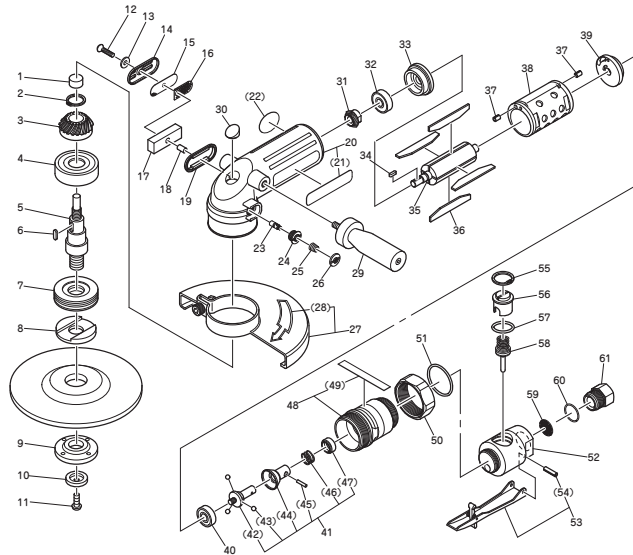
This diagram is for your reference only. Do not attempt to service or repair the Tool.

Do not take the Tool apart. Contact an authorized Nitto dealer for all service and repair of the Tool.

Improper service and repair can cause accidents and service injuries.

Never attempt to modify the Tool.

Never attempt service or repair the Tool yourself.



The part numbers with () are included in the Ass'y parts written above them.

No.	PartsNo.	Parts Name	Qty
1	TQ12088	Needle Bearing BK1012	1
2	TP18356	External Retaining Ring C-14	1
3	TQ14290	Gear	1
4	TP04138	Ball Bearing 6204ZZ	1
5	TQ14289	Spindle	1
6	TP09933	Parallel Key Both Ends Round 4X4X12	1
7	TB12073	Bearing Set Screw Ass'y	1set
8	TQ04123	Driving Flange	1
9	TQ04124	Outer Flange	1
10	TQ04139	Wahser 6.3x21x4.5	1
11	TP14688	Hex. Socket Button Head Screw 6x15	1
12	TQ12330	Raised Countersunk Head Screw 4x20	1
13	TQ12647	Toothed Washer CW-4	1
14	TQ12076	Exhaust Cover	1
15	TQ12570	Filter Support	1
16	TQ12541	Silencer Plate	1
17	TQ12540	Exhaust Filter	1
18	TQ12109	Spacer 5x6x11.8	1
19	TQ12559	Packing Cover	1
20	TB09676	Housing Sub Ass'y	1set
21	(TQ12663)	Label Warning CE Marking	1
22	(TQ14301)	Label Model	1
23	TQ12542	Lock Pin	1
24	TQ12537	Pin Guide	1
25	TQ12544	Conical Spring 0.6x7.2x8.8x8	1
26	TQ12543	Lock Button	1
30	TQ12571	Plug	1
31	TQ14288	Pinion	1
32	TQ12087	Ball Bearing 638ZZ	1
33	TQ12064	EndPlate B	1
34	TP10130	Parallel Key Both Ends Round 3x3x10	1
35	TQ12061	Rotor	1
36	TB08555	Blade Ass'y	1set
37	TP04061	SpringPin 3x6 AW	2

No.	PartsNo.	Parts Name	Qty
38	TQ12062	Cylinder	1
39	TQ12063	EndPlate A	1
40	TP06242	Ball Bearing 629ZZ	1
41	TB08258	Governor Ass'y	1set
42	(TQ12066)	Base	1
43	(TP01566)	Ball φ6	3
44	(TQ12067)	Sleeve	1
45	(TQ12090)	Needle Roller 2.5x13.8	1
46	(TQ12069)	Spring 1.4x15.5x15.5	1
47	(TQ12068)	Stopper	1
48	TB09678	Valve Holder Ass'y	1set
49	(TQ14292)	Label Specification	1
50	TP17452	Lock Ring	1
51	TP17445	O-ring S-35.5	1
52	TQ12662	Valve Body	1
53	TB08669	Lever Ass'y	1set
54	(TP13893)	SpringPin 3x30AW	1
55	TP10448	Internal Retaining Ring C-24	1
56	TQ12668	Adjust Valve	1
57	TP10714	O-ring S-22	1
58	TB09001	Valve Stem Ass'y	1set
59	TP01658	Filter	1
60	CP25821	O-ring JASO-1020	1
61	TQ12671	Bushing M23xRc3/8	1

Accessories

No.	PartsNo.	Parts Name	Qty
27	TB09681	Wheel guard Ass'y	1set
28	(TQ04121)	Label Warning Wheel guard	1
29	TB09680	Side Handle Ass'y	1set
	TP00170	Hex. Socket Screw Key 6	1
	TP01939	Hex. Socket Screw Key 4	1
	TQ04125	Pin Face Wrench	1
	TQ02350	Bushing R3/8xNPT3/8	1
	TQ12673	Instruction Manual	1

15. EXPLODED DIAGRAM : MLG-70

⚠ WARNING

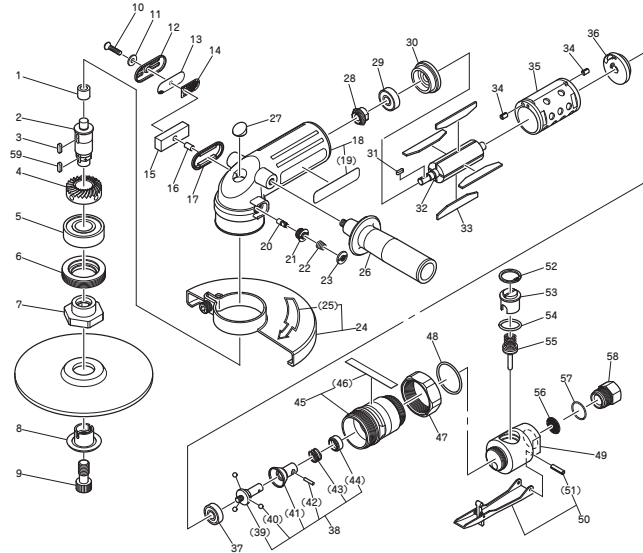
This diagram is for your reference only. Do not attempt to service or repair the Tool.

Do not take the Tool apart. Contact an authorized Nitto dealer for all service and repair of the Tool.

Improper service and repair can cause accidents and service injuries.

Never attempt to modify the Tool.

Never attempt service or repair the Tool yourself.



The part numbers with () are included in the Ass'y parts written above them.

No.	PartsNo.	Description	Qty
1	TQ12088	Needle Bearing BK1012	1
2	TQ12546	Spindle	1
3	TP09933	Parallel Key Both Ends Round 4X4X12	1
59	TQ13516	Grooved Parallel Key Both Ends Round 4X4X12	1
4	TQ12547	Gear	1
5	TP04138	Ball Bearing 6204ZZ	1
6	TB08263	Bearing Set Screw Ass'y	1set
7	TQ00772	Driving Flange	1
8	TQ00771	Outer Flange	1
9	TP11688	Disk Lock Bolt	1
10	TQ12330	Raised Countersunk Head Screw 4X20	1
11	TQ12647	Toothed Washer CW-4	1
12	TQ12076	Exhaust Cover	1
13	TQ12570	Filter Support	1
14	TQ12541	Silencer Plate	1
15	TQ12540	Exhaust Filter	1
16	TQ12109	Spacer 5X6X11.8	1
17	TQ12559	Packing Cover	1
18	TB08793	Housing SUB Ass'y	1set
19	(TQ12663)	Label Warning CE Marking	1
20	TQ12542	Lock Pin	1
21	TQ12537	Pin Guide	1
22	TQ12544	Conical Spring 0.6X7.2X8.8X8	1
23	TQ12543	Lock Button	1
27	TQ12571	Plug	1
28	TQ12070	Pinion	1
29	TQ12087	Ball Bearing 638ZZ	1
30	TQ12064	EndPlate B	1
31	TP10130	Parallel Key Both Ends Round 3X3X10	1
32	TQ12061	Rotor	1
33	TB08555	Blade Ass'y	1set

No.	PartsNo.	Description	Qty
34	TP04061	SpringPin 3X 6 AW	2
35	TQ12062	Cylinder	1
36	TQ12063	EndPlate A	1
37	TP06242	Ball Bearing 629ZZ	1
38	TB08258	Governor Ass'y	1set
39	(TQ12066)	Base	1
40	(TP01566)	Ball ϕ 6	3
41	(TQ12067)	Sleeve	1
42	(TQ12090)	Needle Roller 2.5X13.8	1
43	(TQ12069)	Spring 1.4X15.5X15.5	1
44	(TQ12068)	Stopper	1
45	TB08668	Valve Holder Ass'y	1set
46	(TQ12750)	Label Model	1
47	TP17452	Lock Ring	1
48	TP17445	O-ring S-35.5	1
49	TQ12662	Valve Body	1
50	TB08669	Lever Ass'y	1set
51	(TP13893)	SpringPin 3X30AW	1
52	TP10448	Internal Retaining Ring C-24	1
53	TQ12668	Adjust Valve	1
54	TP10714	O-ring S-22	1
55	TA96331	Valve Stem Ass'y	1set
56	TP01658	Filter	1
57	CP25821	O-ring JASO-1020	1
58	TQ12671	Bushing M23XRc3/8	1

Accessories

No.	PartsNo.	Description	Qty
24	TB08757	Wheel guard Ass'y	1set
25	(TQ12640)	Label Warning Wheel guard	1
26	TB08265	Handle Ass'y	1set
	TP00170	Hex. Socket Screw Key 6	1
	TP11723	Hex. Socket Screw Key 10	1
	TQ02350	Bushing R3/8XNPT3/8	1
	TQ12673	Instruction Manual	1



Overseas Affiliates / Offices

NITTO KOHKI U.S.A., INC.
46 Chancellor Drive, Roselle, IL 60172 U.S.A.
Tel:(1)-630-924-9393 Fax:(1)-630-924-0303

NITTO KOHKI EUROPE CO., LTD.
Unit 21, The Empire Centre Imperial Way,
Watford Herts, WD24 4TS, U.K.
Tel:(44)-1-923-239668 Fax:(44)-1-923-248815

NITTO KOHKI DEUTSCHLAND GMBH
Lerchenstr.47 D-71144 Steinenbronn, Germany
Tel:(49)-7-157-22436 Fax:(49)-7-157-22437

NITTO KOHKI CO., LTD., SINGAPORE BRANCH
10 UBI CRESCENT #01-62,
UBI TECHPARK LOBBY D, SINGAPORE 408564,
Tel:(65)-6227-5360 Fax:(65)-6227-0192

NITTO KOHKI AUSTRALIA PTY. LTD.
77 Brandl St., Brisbane Technology Park,
Eight Mile Plains QLD 4113 Australia
Tel:(61)-7-3340-4600 Fax:(61)-7-3340-4640

NITTO KOHKI CO., LTD.,
BANGKOK REPRESENTATIVE OFFICE
M&A Business Center 38Q. House Convent Bldg.,
7th Floor, Unit 7A, Convent Rd., Silom, Bangrak,
Bangkok 10500 Thailand
Tel:(66)-2-632-0307 Fax:(66)-2-632-0308

NITTO KOHKI (SHANGHAI) CO., LTD.
Room1506, suite C, Orient International Plaza,
NO85 LouShanGuan Road,Shanghai, 200336, CHINA
Tel:(86)-21-6415-3935 Fax:(86)-21-6472-6957

NITTO KOHKI CO., LTD.,
SHENZHEN REPRESENTATIVE OFFICE
2005C Shenzhen ICC Tower, Fuhuasanlu 168, Futian District,
Shenzhen, Guangdong, 518048 China
Tel:(86)-755-8375-2185 Fax:(86)-755-8375-2187

EC DECLARATION OF CONFORMITY

We hereby declare that the following our product conforms with the essential health and safety requirements of EC Directives.

Product: PNEUMATIC ANGLE GRINDER
Model: MYTON:MLG-25, MLG-40, MLG-50, MLG-70
Serial No: In the case of 6 digits serial number.
XXXXXXXX
Consecutive numbers (00001~99999)
Christian era's last digit (0~9)
In the case of 7 digits serial number.
XXXXXXXXX
Consecutive numbers (00001~99999)
Christian era's last digit (0~9)

Manufacturer: NITTO KOHKI Co., Ltd.
2-9-4, Nakaikagami, Ohta-ku, Tokyo, 146-8555, Japan

Authorised person to prepare the technical construction file(TCF) in the community:

Masatoshi Ogue
President
NITTO KOHKI EUROPE Co., Ltd.
Unit21, Empire Centre, Imperial Way, Watford Hertfordshire,
WD24 4TS, UK
Tel:(44)-01923-239668 Fax:(44)-01923-248815

Directive: 2006/42/EC Machinery Directive

The above product has been evaluated for conformity with above directives using the following European standards. The technical construction file (TCF) for this product is retained at the above manufacturer's location.

Machinery Directive: EN ISO12100:2010, EN ISO11148-7:2012, others
Sound Pressure/Power Level: EN ISO15744:2008, EN ISO4871:1996
Vibration Level: EN28927-1:2009

Signature: _____

Date/Place: _____ /Tokyo, Japan

Name: K.Kishi _____

Title: GENERAL MANAGER MACHINE TOOLS DIV. _____

NITTO KOHKI Co., Ltd.
2-9-4, Nakaikagami, Ohta-ku, Tokyo, 146-8555, Japan

Being the responsible person appointed and employed the manufacturer.