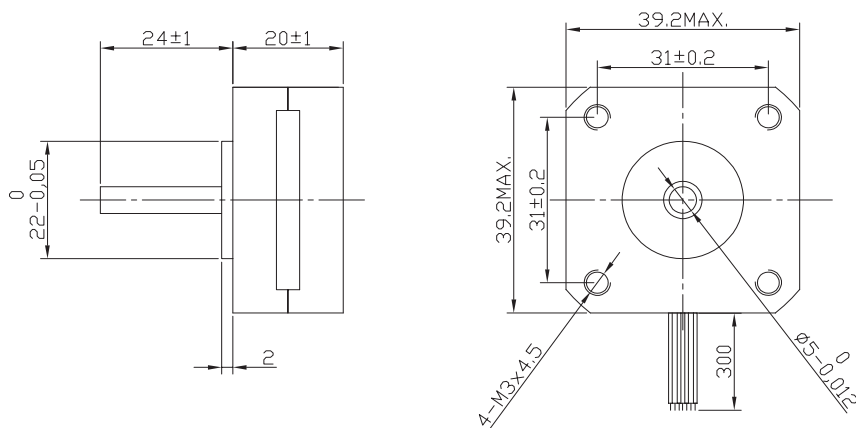


Datasheet



Characteristics

STEP ANGLE	1,8°
STEP ANGLE ACCURACY	± 5%
INSULATION CLASS	B
AMBIENT TEMPERATURE	-20°C +50°C
TEMP. RISE	80°C MAX (RATED CURRENT, 2 PHASE ON)
INSULATION RESISTANCE	100 M OHM MIN. 500 VDC
DIELECTRIC STRENGTH	500 VAC FOR ONE MINUTE
SHAFT RADIAL PLAY	0,02 MAX (450 G LOAD)
SHAFT AXIAL PLAY	0,08 MAX. (450 G LOAD)
MAX RADIAL FORCE	28 N (20 MM FROM FRONT FLANGE)
MAX AXIAL FORCE	10 N

Specification

Model		39SH20-0404A	39SH20-0506A
1 RATED VOLTAGE	V	2,64	6,5
2 CURRENT/PHASE	A	0,4	0,5
3 RESISTANCE/PHASE	Ω	6,6	13
4 INDUCTANCE/PHASE	mH	7,5	7,5
5 HOLDING TORQUE	NM	0,065	0,08
6 ROTOR INERTIA	G-CM ²	11	11
7 WEIGHT	KG	0,12	0,12
8 NUMBER OF LEADS	N°	4	6

Connection

LEAD N°	COLOR	GAUGE	FUNCTION
1	BLACK	UL1430 AWG26	PHASE A
2	GREEN	UL1430 AWG26	PHASE A-
3	RED	UL1430 AWG26	PHASE B
4	BLUE	UL1430 AWG26	PHASE B-
UNIPOLAR MOTOR			
5	YELLOW	UL1430 AWG26	COM PHASE A
6	WHITE	UL1430 AWG26	COM PHASE B

Speed vs. Torque Characteristics

