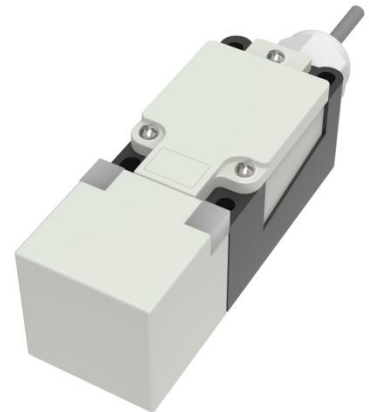


# RS PRO Inductive Sensor

RS Stock No.: 2522026

## FEATURES

- Non contact detection, safe and reliable;
- ASIC design;
- Perfect choice for metallic target detection.
- Full range specifications optional;



RS Professionally Approved Products bring to you professional quality parts across all product categories. Our product range has been tested by engineers and provides a comparable quality to the leading brands without paying a premium price.

### Specifications

<b>Mounting</b>	Flush	
<b>Rated distance Sn</b>	15mm	
<b>Assured distance Sa</b>	0...12mm	
<b>Shape size</b>	40mm*40mm *140mm	
<b>Output</b>	AC/DC 2 wires NO	
<b>Supply voltage</b>	20...250 VAC/DC	
<b>Standard target</b>	Fe 45*45*1t	
<b>Switch point offset[%/Sr]</b>	≤ ±10%	
<b>Hysteresis range [%/Sr]:</b>	1...20%	
<b>Repeat accuracy</b>	≤3%	
<b>Load current</b>	AC: ≤300mA	DC: ≤100mA
<b>Residual voltage</b>	AC: ≤10V	DC: ≤8V
<b>Current consumption</b>	AC: ≤3mA	DC: ≤1mA
<b>Protection circuit:</b>	...	
<b>Output indicator:</b>	Yellow LED	
<b>Ambient temperature</b>	-25°C...70°C	
<b>Ambient humidity</b>	35-95%RH	
<b>Switch frequency</b>	AC: 20 Hz	DC: 100 Hz
<b>Voltage withstand</b>	1000V/AC 50/60Hz 60S	
<b>Insulation resistance</b>	≥50MΩ (500VDC)	
<b>Vibration resistance</b>	10...50Hz(1.5mm)	
<b>Housing material</b>	PBT	
<b>Connection</b>	Terminal	

### Protection Category

**IP Rating** IP67

### Additional Information

**Custom Tariff Number/HS code** 903180

### Approvals

**Compliance/Certifications** CE

**Dimension and Wiring**