

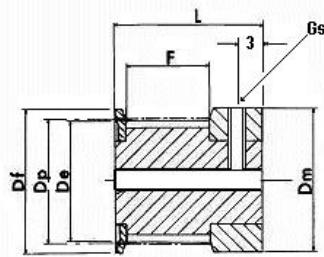
Timing Pulleys MXL025

(0.080" / 2.032mm pitch)

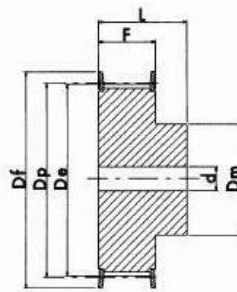
for 6.35mm (1/4") wide belt

Centre drilled or Pilot Bore

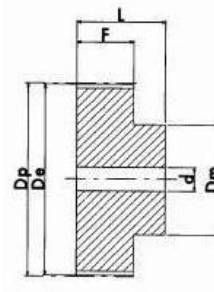
in Aluminium with Zinc plated Steel Flanges



EXECUTION OFB



EXECUTION 1F



EXECUTION 2

Dimensions

Please note : All dimensions subject to change.
Pulleys may be Bored or Unbored.

Stock Number	Type	No. Teeth	Dp	De	Df	Dm	F	L	Bore	No. Flanges	G'screw
7784758	OFB	10	6.47	5.97	10	10	7.00 + 1mm , - 0	16	3	2	M2.5
7784752	OFB	12	7.77	7.26	11	11	7.00 + 1mm , - 0	16	3	2	M2.5
7784761	OFB	14	9.07	8.58	12.5	12.5	7.00 + 1mm , - 0	16	3	2	M2.1
7784764	OFB	15	9.70	9.19	13	13	7.00 + 1mm , - 0	16	3	2	M2.0
7784768	OFB	16	10.35	9.84	14	14	7.00 + 1mm , - 0	16	3	2	M2.1
7784777	OFB	18	11.64	11.12	15	15	7.00 + 1mm , - 0	16	3	2	M2.2
7784770	OFB	20	12.94	12.43	16	16	7.00 + 1mm , - 0	16	3	2	M2.3
7784774	OFB	22	14.23	13.72	18	18	7.00 + 1mm , - 0	16	3	2	M2.4
7784783	OFB	24	15.52	15.01	19	19	7.00 + 1mm , - 0	16	3	2	M2.5
7784786	1F	30	19.40	18.90	25	12	11.00 + 1mm , - 0	16	4	2	.
7784780	1F	36	23.29	22.78	28	16	11.00 + 1mm , - 0	16	4	2	.
7784799	1F	40	25.87	25.37	32	18	11.00 + 1mm , - 0	16	4	2	.
7784792	1F	44	28.46	27.95	36	18	11.00 + 1mm , - 0	16	5	2	.
7784796	2	48	31.05	30.54	.	20	11.00 + 1mm , - 0	16	5	0	.
7784806	2	60	38.81	38.30	.	24	11.00 + 1mm , - 0	16	5	0	.
7784809	2	72	46.57	46.06	.	25	11.00 + 1mm , - 0	16	6	0	.