

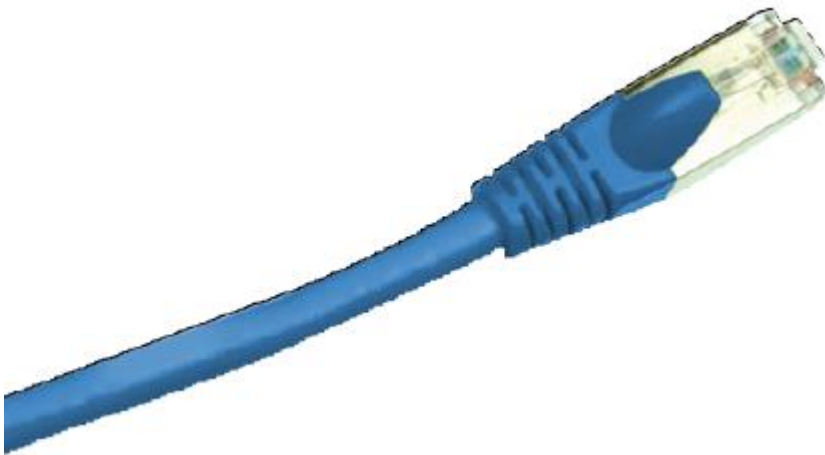


ENGLISH

## Datasheet

### RS PRO Yellow LSZH Cat5e Cable U/UTP

RS Stock number 556-825



### Description:

Category 5e unshielded patch cord range exceeds the transmission line performance requirements of IEC and TIA for CLASS D/Category 5e systems. The patch cords are designed for mechanical and electrical reliability, using quality materials and processes, to provide a patch cord solution which delivers a consistent high level of systems performance whilst incorporating design features that allow a “one style fits all” cord application. The low profile moulded boot and snag free latching allows the cords to be deployed within even the most densely populated network installations deploying the latest blade server technology. Each Category 5e patch cords are manufactured and tested in accordance with IEC 61935-2 and comply with the requirements of ISO/IEC 11801 (2<sup>nd</sup> Edition): 2010 and supports all applications designed or CLASS D/Category 5e applications such as 1000BASE-T (Gigabit Ethernet), ATM 155, 100BASE-Tx, Token Ring 100Mbs-1 and 1G FCBASE-T.

### Applications:

- Class D/Category 5e standards compliant

### Standards Compliance:

- REACH/SvHC compliant regulation (EC) No. 1907/2006
- This product conforms to the materials requirements of RoHS2

**Specifications:**

Construction

	AWG	26
Conductors	Size mm	0.915 +/- 0.008
	Material	Bare Copper
Insulators	Diameter mm	0.97 +/-0.05
	Material	Polyolefin
	External O.D.	6.0 +/-0.20
Jacket	Thickness mm	0.5
	Material	LSZH
	Coverage (%)	125

**Technical Drawing:**

