

FEATURES

- All Fluids compatible
- Mechanical resistance
- Silicon free

RS PRO MALE PLUG (PARALLEL)

RS Stock No.: 2312535



RS PROfessionally Approved Products bring to you professional quality parts across all product categories. Our product range has been tested by engineers and provides a comparable quality to the leading brands without paying a premium price.

Product Description

The RS PRO male plug (parallel) mainly used in compressed air, pneumatic automation, industrial water circuit applications. High performances in pressure and temperatures (+300°C). Available with sharp threads. RoHS and REACH compliant.

General Specifications

Product Type	Adapter
Accessory Type	Plug Connector
Material	Nickel Plated Brass
Maximum Pressure	75bar
Chemical Resistant	Yes
Food Grade	Yes
Applications	Compressed Air, Pneumatic Automation, Industrial water circuits, Inert Gases, Fluids, Steam, Vacuum

Mechanical Specifications

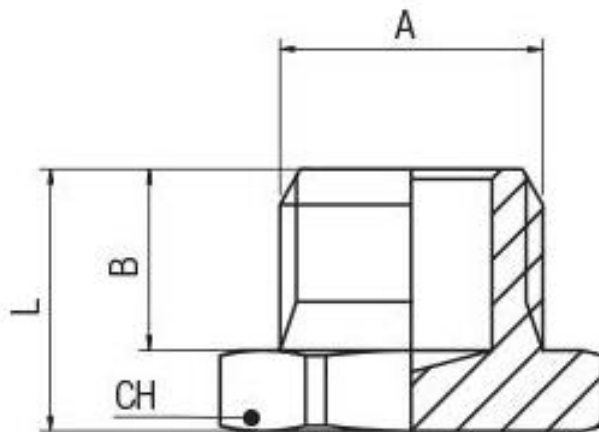
Overall Length	13.5mm
Tube Size	9.5mm
Threaded Connection	3/8in Male
Threaded Connection - Thread Size	3/8in
Wrench Size	19mm

Operation Environment Specifications

Maximum Temperature	+300°C
----------------------------	--------

Similar Products

Parameters	2312644	2312645
Brand	RS PRO	RS PRO
Product Type	Plug Fitting	Plug Fitting
Accessory Type	Plug Assembly	Plug Assembly
Material	Brass	Brass
Outer Diameter	Compressed Air, Pneumatic Automation, Industrial water circuits, Inert Gases, Fluids, Steam, Vacuum	Compressed Air, Pneumatic Automation, Industrial water circuits, Inert Gases, Fluids, Steam, Vacuum
Overall Length	10.5mm	10.5mm
Tube Size	6mm	8mm
Maximum Temperature	+300°C	+300°C
Minimum Temperature	-60°C	-60°C
Standards Met	RoHS and REACH Compliant	RoHS and REACH Compliant
Applications	Compressed Air, Pneumatic Automation, Industrial water circuits, Inert Gases, Fluids, Steam, Vacuum	Compressed Air, Pneumatic Automation, Industrial water circuits, Inert Gases, Fluids, Steam, Vacuum



A	B	L	CH	Pack.
3/8	9.5	13.5	19	10