

FEATURES

- Rated Voltages 690V a.c./250V d.c.
- Breaking Capacities 80kA a.c. 40kA d.c.

RS PRO BOLTIN FUSE-HOLDERS FOR INDUSTRIAL FUSE-LINKS TO IEC60269-2/BS88-2

RS Stock No.: 216-5525



Product Description

Boltin style fuse holders are for use in industrial installations and can be fitted with BS88 boltin fuse-links.

RS Professionally Approved Products bring to you professional quality parts across all product categories. Our product range has been tested by engineers and provides a comparable quality to the leading brands without paying a premium price.

General Specifications

Current Rating	200A
Fuse Size	B2
Voltage Rating	250 V dc, 690 V ac
Fuse Standard	IEC 60269-2/BS 88-2
Fixing Centres for fuse-link	111 mm
Colour	Black

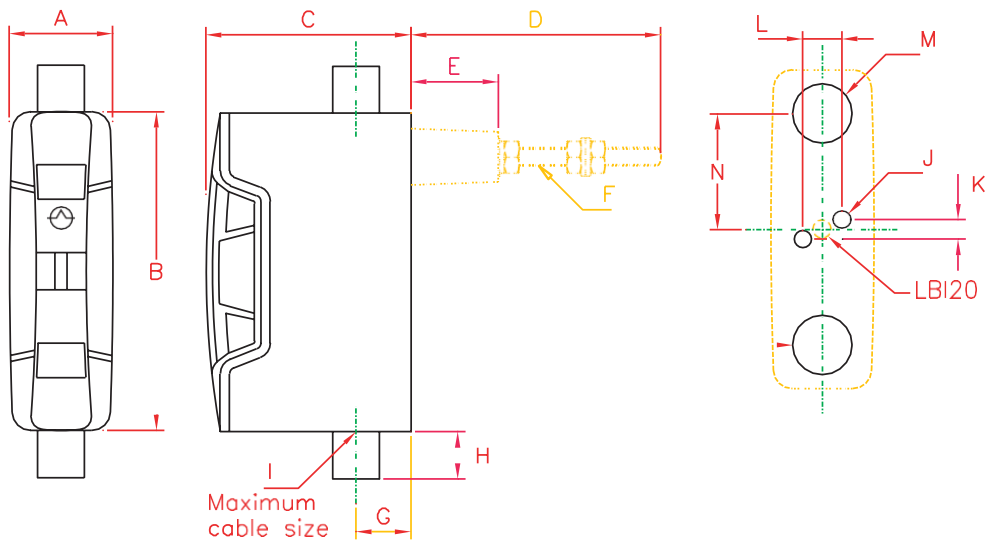
Approvals

Standards Met	IEC 60269-2/BS 88-2
---------------	---------------------

Connection Diagrams / Assembly Diagrams / Illustrations / Accessories



List Reference	Current Rating (A)	Colour	Lawson Fuse-Link 415V 660V	Solid Link
LBI 20 FC/FC BK LBI 20 FC/BC BK LBI 20 BC/BC BK	20	Black	NIT SSA1	SLA1 20
LBI 32 FC/FC BK LBI 32 FC/BC BK LBI 32 BC/BC BK	32		GTIA/TIA SSA2	SLA2 32
LBI 63 FC/FC BK LBI 63 FC/BC BK LBI 63 BC/BC BK	63		TIS SSA3	SLA3 63
LBI 100 FC/FC BK LBI 100 FC/BC BK LBI 100 BC/BC BK	100		TCP SSA4	SLA4 100
LBI 200 FC/FC BK LBI 200 FC/BC BK LBI 200 BC/BC BK	200		CTF/TF SSB2	SLB2 200
Spare Carriers	Spare Cable Shrouds (Grey)		DIN-Rail Adaptor	
LBI 20 CA BK LBI 32 CA BK LBI 63 CA BK LBI 100 CA BK LBI 200 CA BK	LBI 20 SH LBI 32 SH LBI 63 SH LBI 100 SH LBI 200 SH		LBI 20 DA Busbar Stud Connector LBI 32 LBI 63	



LAWSON REFERENCE	CURRENT RATING AMPS	GENERAL DIMENSIONS (mm)													
		A	B	C	D	E	F	G	H	I mm ²	J	K	L	M	N
LBI20	20	27	80	48	60	28.5	M6	16	14	10	5.5	n/a	n/a	15	29
LBI32	32	33	102	65	78	28.5	M6	16	14	16	5.5	6.3	12.7	19	37
LBI63	63	36	112	72	84	28.5	M8	19	14	25	5.5	6.3	12.7	19	39
LBI100	100	53	144	90	85	32	M10	24	14	70	6.5	22	19	23	48
LBI200	200	60	171	143	95	32	M12	30	21	120	6.5	57	38	28	61