

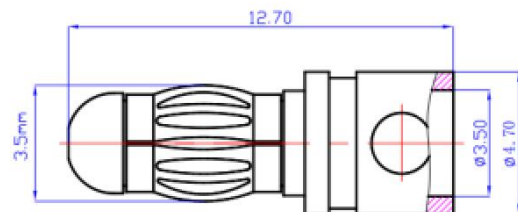


## Datasheet

# RS PRO GC3510 3.5mm Banana Male connector

Stock number: 180-5409

EN



Section

## Material & Parameter

Recommend USE: Motor/controller  
Metal Material: Brass Gold Plated  
Use Times: 2000 TIMES  
Cable Spec: 16AWG

Contact Resistance: 0.45mΩ  
Rated Current: 25A  
Momentary Current: 50A

**Remark:** Data sheet will change according with the test background