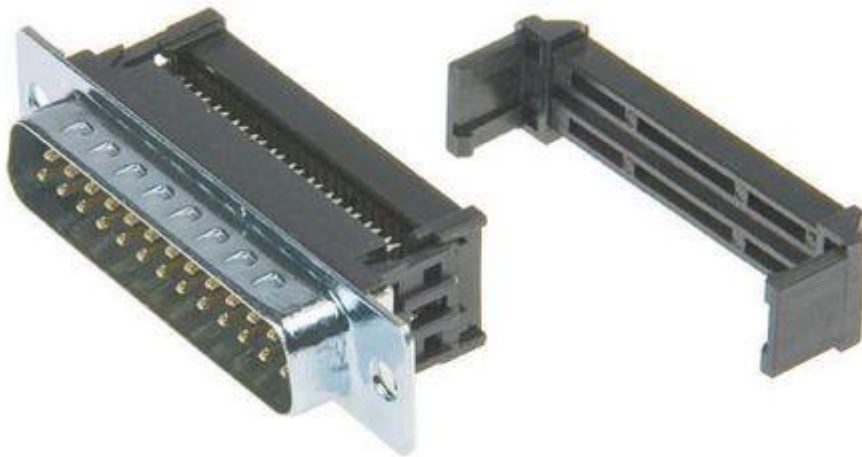


## Datasheet

# Pitch 25 Way IDC D-sub Connector, Plug, Zinc Plated Steel Shell

RS Stock number [492-642](#)



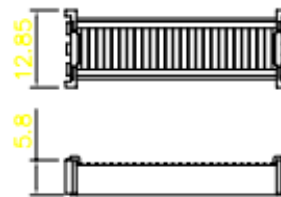
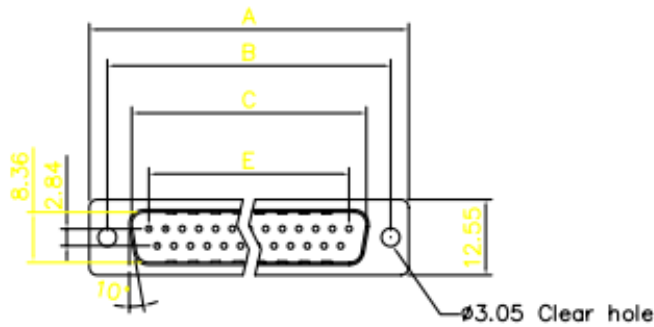
### Specifications:

#### Material

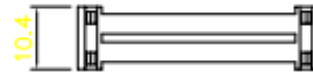
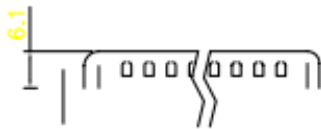
Insulator: Glass filled thermoplastic PBT, UL94V-0  
Contact: Phosphor bronze

#### Electrical

Contact Resistance: 20 milliohms, max. at 1A dc  
Insulation Resistance: 1000 megohms at 500 VDC  
Dielectric withstanding voltage: 1000 VAC/rms 60Hz for 1 minute  
Current Rating: 3A  
Voltage Rating: 250 VAC/rms 60Hz



Cover



Strain Relief

Dimensions

Positions	A	B	D	E	F	
9	30.81	24.99	16.33	11.08	10.16	492648
15	39.14	33.32	24.66	19.39	17.78	492654
25	53.04	47.04	38.38	33.24	30.48	492660
37	69.32	63.50	54.84	49.86	45.72	492658