



Datasheet

RS PRO 5 mtr DisplayPort Male to DVI-D Male Cable

Stock number: 182-8788

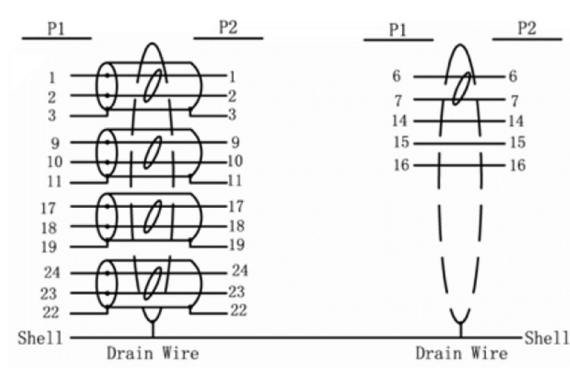
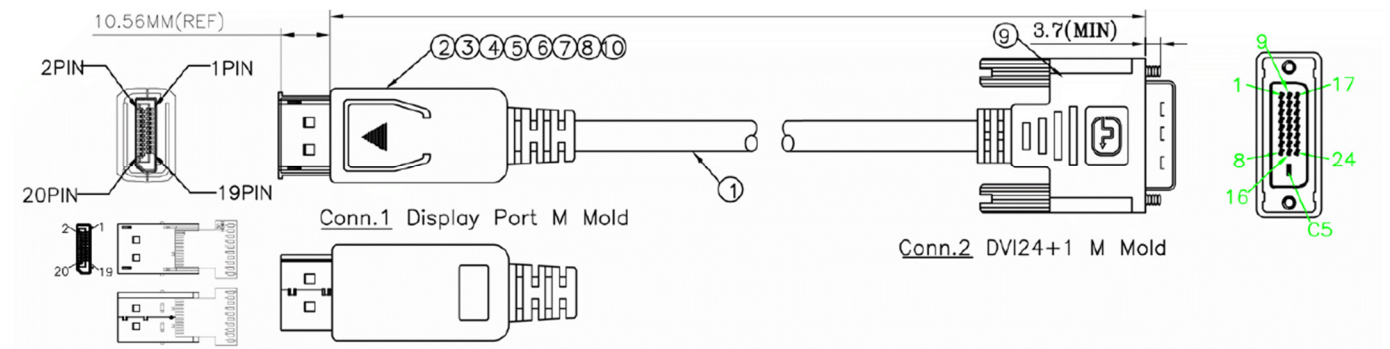
EN

Our RS PRO 5 metre DisplayPort to DVI-D cable comes with a latching, 20 pin male connector.

The connector hoods are made from black PVC and come with dust caps to protect the connectors. On top of the connector is the latch release and a strain relief on the end of the hood to support the cable.

There are three different types of DVI cables which all share a common connector, DVI-A(analogue), DVI-D(digital) and DVI-I(integrated).

DVI-D and DVI-I are also split into two types of cable, dual link and single link. Dual link has all the pins connected to achieve higher resolutions whereas single link may have the physical pins present but some will not be connected inside the cable.



10	DisplayPort M DUST CAP
9	DVI M DUST CAP
8	DisplayPotr M ABS UP SHELL BLACK
7	DisplayPort M ABS TOP SHELL BLACK
6	φ 1.0 H. S. T L=10MM*4PCS
5	φ 2.0 H. S. T L=8MM*4PCS
4	φ 1.5 H. S. T L=16MM
3	45P BLACK PVC
2	DP (SHELL GOLD PLATED) to HDMI/DVI PCB+SMT+SOLDER
1	DVI (24+1)M TO DVI (24+1) M 30AWG 4M BLCAK GOLD PLATED

RoHS / REACH / CE