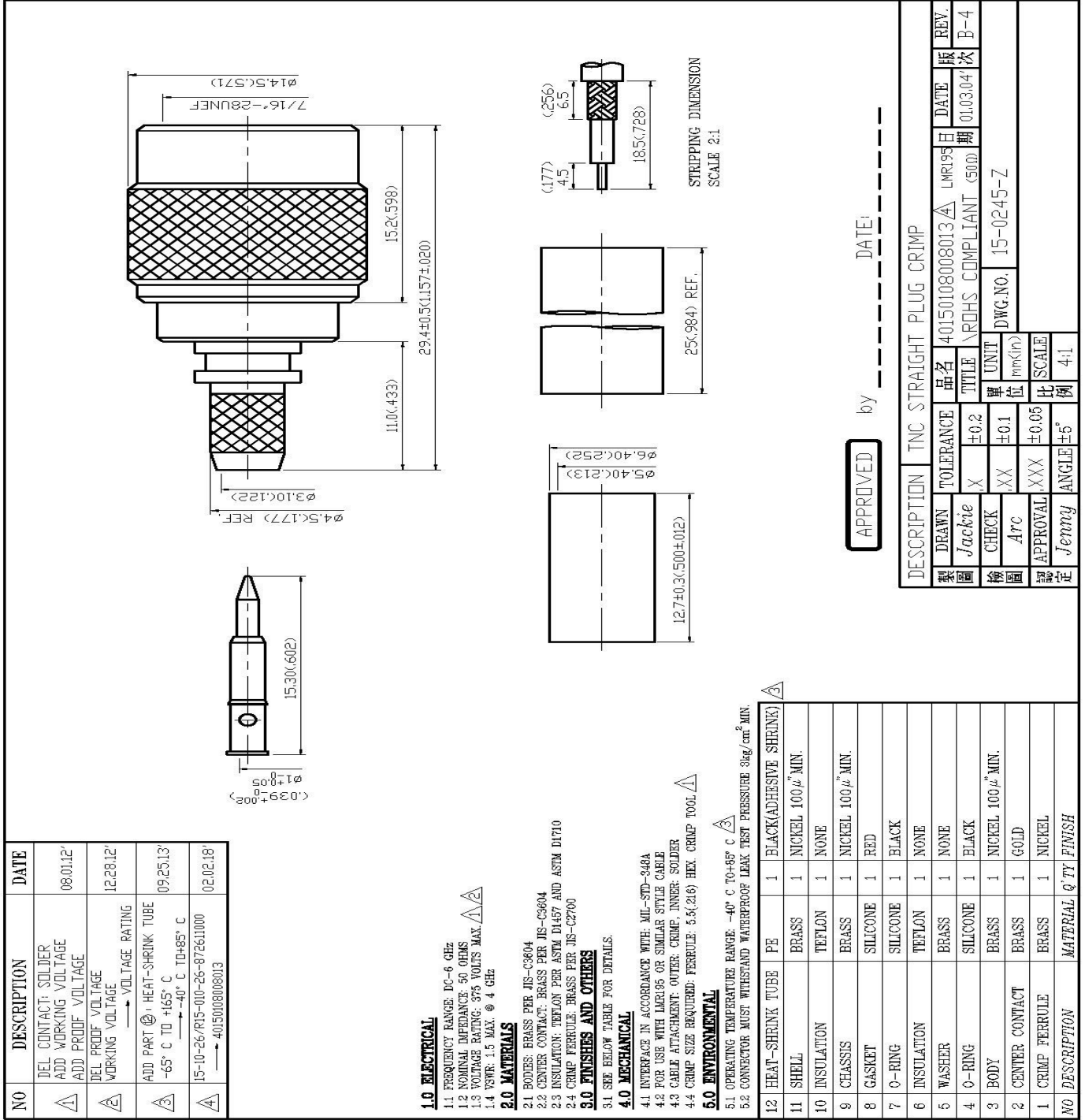


Datasheet

Stock No:1706964

**RS Pro TNC STRAIGHT PLUG CRIMP**



NO	DESCRIPTION	DATE
Δ	DEL CONTACT: SOLDER ADD WORKING VOLTAGE ADD PROOF VOLTAGE	08.01.12'
Δ	DEL PROOF VOLTAGE WORKING VOLTAGE → VOLTAGE RATING	12.28.12'
Δ	ADD PART ⊕: HEAT-SHRINK TUBE -65° C TO +165° C → -40° C TO +85° C	09.25.13'
Δ	15-10-26/R15-010-26-872611000 → 40150108008013	02.02.18'

**1.0 ELECTRICAL**

- 1.1 FREQUENCY RANGE: DC-6 GHz
- 1.2 NOMINAL IMPEDANCE: 50 OHMS
- 1.3 VOLTAGE RATING: 375 VOLTS MAX. Δ/Δ
- 1.4 VSWR: 1.5 MAX. @ 4 GHz

**2.0 MATERIALS**

- 2.1 BODIES: BRASS PER JIS-C3604
- 2.2 CENTER CONTACT: BRASS PER JIS-C3604
- 2.3 INSULATION: TEFLON PER ASTM D1457 AND ASTM D1710
- 2.4 CRIMP FERRULE: BRASS PER JIS-C2700

**3.0 FINISHES AND OTHERS**

- 3.1 SEE BELOW TABLE FOR DETAILS.

**4.0 MECHANICAL**

- 4.1 INTERFACE IN ACCORDANCE WITH MIL-STD-3484
- 4.2 FOR USE WITH LMR665 OR SIMILAR STYLE CABLE
- 4.3 CABLE ATTACHMENT: OUTER CRIMP, INNER SOLDER
- 4.4 CRIMP SIZE REQUIRED: FERRULE: 5.5(216) HEX. CRIMP TOOL Δ

**5.0 ENVIRONMENTAL**

- 5.1 OPERATING TEMPERATURE RANGE: -40° C TO +85° C Δ
- 5.2 CONNECTOR MUST WITHSTAND WATERPROOF LEAK TEST PRESSURE 8kg/cm<sup>2</sup> MIN.

NO	DESCRIPTION	MATERIAL	QTY	FINISH
12	HEAT-SHRINK TUBE	PE	1	BLACK(ADHESIVE SHRINK) Δ
11	SHELL	BRASS	1	NICKEL 100μ <sup>m</sup> MIN.
10	INSULATION	TEFLON	1	NONE
9	CHASSIS	BRASS	1	NICKEL 100μ <sup>m</sup> MIN.
8	GASKET	SILICONE	1	RED
7	O-RING	SILICONE	1	BLACK
6	INSULATION	TEFLON	1	NONE
5	WASHER	BRASS	1	NONE
4	O-RING	SILICONE	1	BLACK
3	BODY	BRASS	1	NICKEL 100μ <sup>m</sup> MIN.
2	CENTER CONTACT	BRASS	1	GOLD
1	CRIMP FERRULE	BRASS	1	NICKEL
NO	DESCRIPTION	MATERIAL	QTY	FINISH