

Cartridge Fuses

Ceramic, Fast-Acting, $\Phi 5.2\text{mm} \times 20\text{mm}$

multicomp PRO

**RoHS
Compliant**



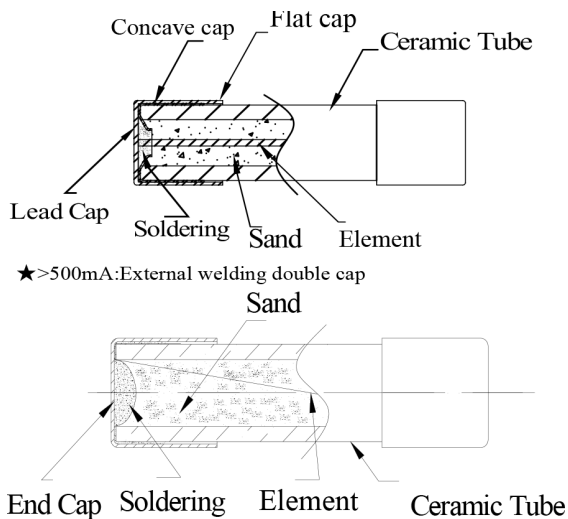
Description

This series fast-acting fuse with high breaking capacity for use with printed circuit boards is used in a large variety of applications. This $\Phi 5\text{mm} \times 20\text{mm}$ device is constructed of a ceramic tube with electro-plated brass end caps. This series with 300V AC rating and 1500 Ampere breaking/300V AC rating and 750A breaking, offers excellent quality and is 100% tested for cold resistance and precise length.

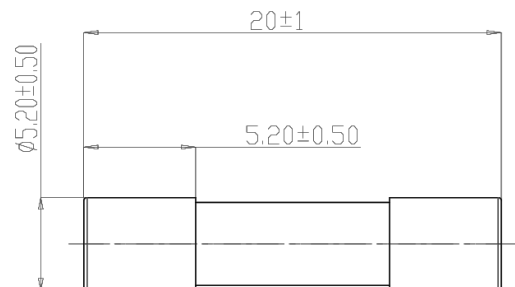
Features

- Miniature fuse with fast-acting, high breaking capacity
- $\Phi 5\text{mm} \times 20\text{mm}$ physical dimensions
- Ceramic tube, encapsulated design with nickel - plated brass end caps
- Protection against harmful over-currents in primary and secondary applications.
- Designed compliant to UL248-14 IEC60127-7

Mechanical Specifications



Dimensions



Dimensions : Millimetres

Electrical Specifications

Time vs Current Characteristics Table

(measured with constant current power supply)

Time vs Current Characteristics: UL 248-14					
Rated Current	100%	210%	275%	400%	1000%
100mA-25A	>1h	<30min	40ms-20s	10ms-1s	≤30ms

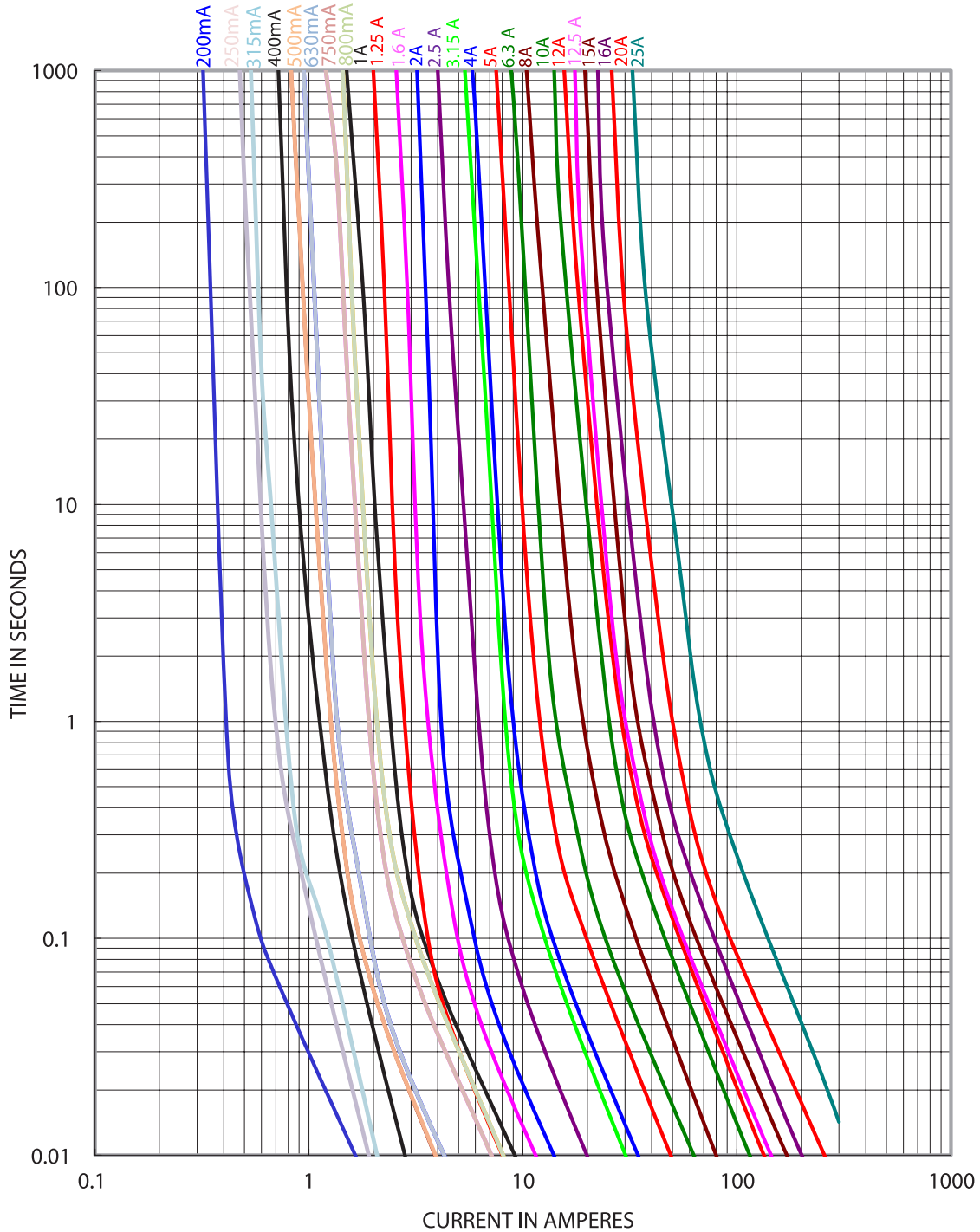
Newark.com/multicomp-pro
Farnell.com/multicomp-pro
sg.element14.com/b/multicomp-pro

multicomp PRO

Cartridge Fuses

Ceramic, Fast-Acting, $\Phi 5.2\text{mm} \times 20\text{mm}$

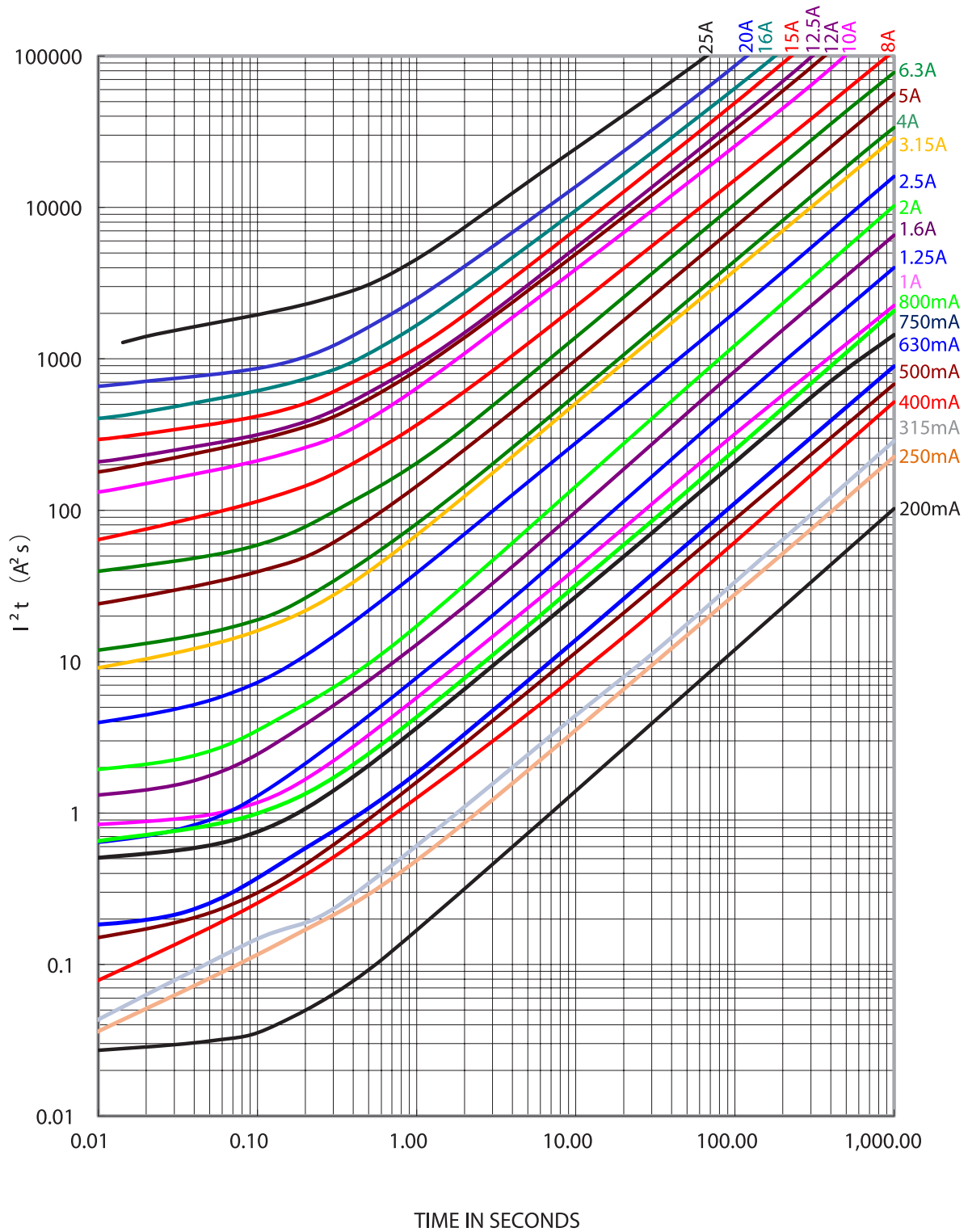
Average Time Current (I-T) Curves



Cartridge Fuses

Ceramic, Fast-Acting, $\Phi 5.2\text{mm} \times 20\text{mm}$

multicomp PRO



multicomp PRO

Cartridge Fuses

Ceramic, Fast-Acting, $\Phi 5.2\text{mm} \times 20\text{mm}$

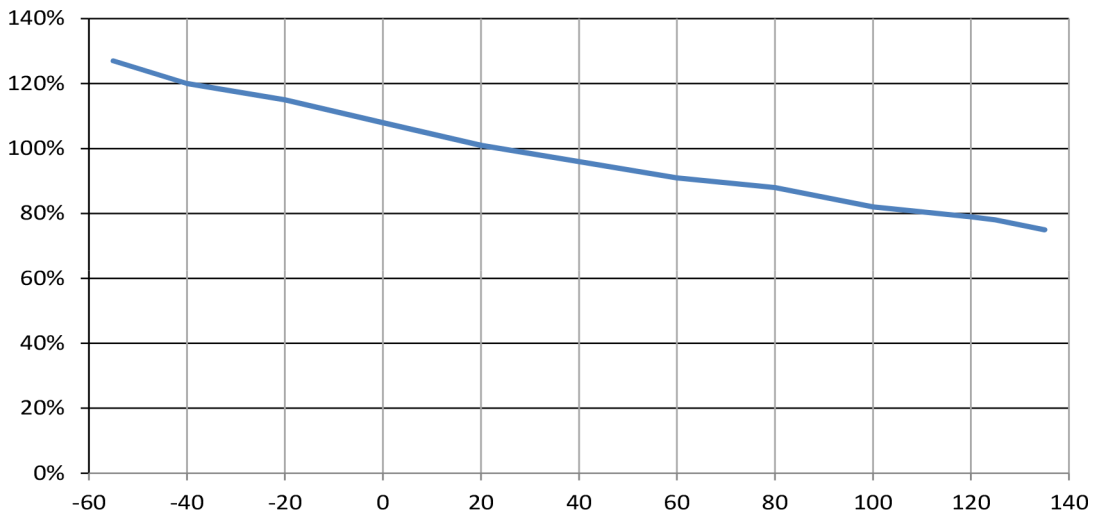


Electrical characteristics

Electrical Characteristics at 25°C									
Amp Code	Rated Current	Rated Voltage	Nominal Melting I ² t (A ² sec)	Typical cold Resistance (mΩ)	Breaking Capacity	Approvals			
						CCC	CQC	cURus	TUV
MP008908	10.00A	250V AC 300V AC	140	9.8	1500A@250V AC 1500A@300V AC	●	○	●	●

Notes: (1) Permissible continuous operating current is $\leq 100\%$ at ambient temperature of 23°C (73.4°F)
 (2) Typical pre-arcing I²t are measured at 10In current.

Temperature Derating Curve



Part Number Table

Description	Part Number
Tube Ceramic cartridge Fuse, 5 × 20mm, Clip Mount	MP008908

Important Notice : This data sheet and its contents (the "Information") belong to the members of the AVNET group of companies (the "Group") or are licensed to it. No licence is granted for the use of it other than for information purposes in connection with the products to which it relates. No licence of any intellectual property rights is granted. The Information is subject to change without notice and replaces all data sheets previously supplied. The Information supplied is believed to be accurate but the Group assumes no responsibility for its accuracy or completeness, any error in or omission from it or for any use made of it. Users of this data sheet should check for themselves the Information and the suitability of the products for their purpose and not make any assumptions based on information included or omitted. Liability for loss or damage resulting from any reliance on the Information or use of it (including liability resulting from negligence or where the Group was aware of the possibility of such loss or damage arising) is excluded. This will not operate to limit or restrict the Group's liability for death or personal injury resulting from its negligence. Multicomp Pro is the registered trademark of Premier Farnell Limited 2019.

Newark.com/multicomp-pro
 Farnell.com/multicomp-pro
 sg.element14.com/b/multicomp-pro

