

SAKDU 2.5N

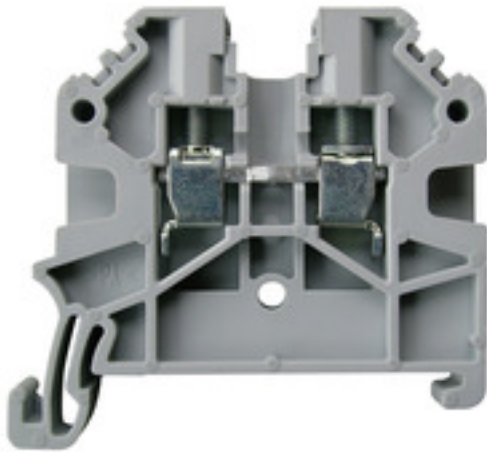
Weidmüller Interface GmbH & Co. KG

Klingenbergstraße 26

D-32758 Detmold

Germany

www.weidmueller.com



To feed through power, signal, and data is the classical requirement in electrical engineering and panel building. The insulating material, the connection system and the design of the terminal blocks are the differentiating features. A feed-through terminal block is suitable for joining and/or connecting one or more conductors. They could have one or more connection levels that are on the same potential or insulated against one another.

General ordering data

| | |
|---------------|---|
| Version | Feed through terminal with rated cross section 2.5mm ² |
| Order No. | 1485790000 |
| Type | SAKDU 2.5N |
| GTIN (EAN) | 4050118316063 |
| Qty. | 100 Stück |
| Local product | Only available in certain countries |

Erstellungs-Datum November 28, 2023 6:41:38 AM CET

Katalogstand 24.11.2023 / Technische Änderungen vorbehalten

SAKDU 2.5N

Weidmüller Interface GmbH & Co. KG

Klingenbergstraße 26

D-32758 Detmold

Germany

www.weidmueller.com

Technische Daten

General ordering data

| | |
|---------------|-------------------------------------|
| Local product | Only available in certain countries |
|---------------|-------------------------------------|

Dimensions and weights

| | | | |
|--------------------------|------------|----------------|------------|
| Depth | 40 mm | Depth (inches) | 1.575 inch |
| Depth including DIN rail | 41 mm | Height | 44 mm |
| Height (inches) | 1.732 inch | Width | 5.5 mm |
| Width (inches) | 0.217 inch | Net weight | 5.5 g |

Temperatures

| | | | |
|----------------------------------|----------------|----------------------------------|--------|
| Storage temperature | -25 °C...55 °C | Continuous operating temp., min. | -50 °C |
| Continuous operating temp., max. | 120 °C | | |

Material data

| | | | |
|---------------------------|---------|--------|------|
| Material | PA 66/6 | Colour | grey |
| UL 94 flammability rating | V-0 | | |

System specifications

| | | | |
|-------------------------------|-----|-------------------------------------|-------|
| End cover plate required | Yes | Number of potentials | 1 |
| Number of levels | 1 | Number of clamping points per level | 2 |
| Number of potentials per tier | 1 | Levels cross-connected internally | No |
| PE connection | No | Rail | TS 35 |
| N-function | No | PE function | No |
| PEN function | No | | |

Additional technical data

| | |
|------------------|---------|
| Type of mounting | Snap-on |
|------------------|---------|

Conductors for clamping (rated connection)

| | | | |
|---|---------------------|---|---------------------|
| Clamping range, max. | 2.5 mm ² | Clamping range, min. | 0.5 mm ² |
| Clamping screw | M 2.5 | Connection direction | on side |
| Gauge to IEC 60947-1 | A3 | Number of connections | 2 |
| Stripping length | 10 mm | Tightening torque, max. | 0.6 Nm |
| Tightening torque, min. | 0.4 Nm | Type of connection | Screw connection |
| Wire connection cross section AWG, max. | AWG 12 | Wire connection cross section AWG, min. | AWG 20 |
| Wire connection cross section, finely stranded, max. | 2.5 mm ² | Wire connection cross section, finely stranded, min. | 0.5 mm ² |
| Wire connection cross-section, finely stranded with wire-end ferrules DIN 46228/1, max. | 2.5 mm ² | Wire connection cross-section, finely stranded with wire-end ferrules DIN 46228/1, min. | 0.5 mm ² |
| Wire connection cross-section, finely stranded with wire-end ferrules DIN 46228/4, max. | 2.5 mm ² | Wire connection cross-section, finely stranded with wire-end ferrules DIN 46228/4, min. | 0.5 mm ² |
| Wire connection cross-section, solid core, max. | 2.5 mm ² | Wire connection cross-section, solid core, min. | 0.5 mm ² |

SAKDU 2.5N

Weidmüller Interface GmbH & Co. KG

Klingenbergstraße 26

D-32758 Detmold

Germany

www.weidmueller.com

Technische Daten

General

| | | | |
|---|--------|---|--------|
| Rail | TS 35 | Wire connection cross section AWG, max. | AWG 12 |
| Wire connection cross section AWG, min. | AWG 20 | | |

Rating data

| | | | |
|---------------------------------|---------------------|--|---------|
| Rated cross-section | 2.5 mm ² | Rated voltage | 800 V |
| Rated DC voltage | 800 V | Rated current | 24 A |
| Current at maximum wires | 24 A | Volume resistance according to IEC 60947-7-x | 1.33 mΩ |
| Rated impulse withstand voltage | 8 kV | Power loss in accordance with IEC 60947-7-x | 0.77 mW |
| Pollution severity | 3 | Surge voltage category | III |

UL rating data

| | | | |
|---|--------|---|--------|
| Certificate No. (UR) | E60693 | Conductor size Factory wiring max. (UR) | 12 AWG |
| Conductor size Factory wiring min. (UR) | 20 AWG | Conductor size Field wiring max. (UR) | 12 AWG |
| Conductor size Field wiring min. (UR) | 20 AWG | | |

Classifications

| | | | |
|-------------|-------------|-------------|-------------|
| ETIM 6.0 | EC000897 | ETIM 7.0 | EC000897 |
| ETIM 8.0 | EC000897 | ETIM 9.0 | EC000897 |
| ECLASS 9.0 | 27-14-11-20 | ECLASS 9.1 | 27-14-11-20 |
| ECLASS 10.0 | 27-14-11-20 | ECLASS 11.0 | 27-14-11-20 |
| ECLASS 12.0 | 27-14-11-20 | ECLASS 13.0 | 27250101 |

Approvals

Approvals



| | |
|-----------------------|------------|
| ROHS | Conform |
| UL File Number Search | UL Website |
| Certificate No. (UR) | E60693 |

Downloads

| | |
|---|--|
| Approval/Certificate/Document of Conformity | CE Declaration of Conformity UKCA declaration of conformity |
| Engineering Data | CAD data – STEP |
| User Documentation | StorageConditionsTerminalBlocks |
| Catalogues | Catalogues in PDF-format |
| Brochures | |