

För icke direkt toleranssatta mått gäller toleransklass  
General tolerances if not otherwise stated

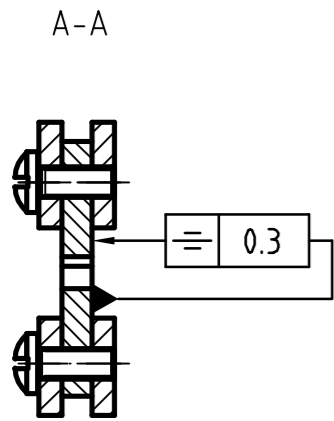
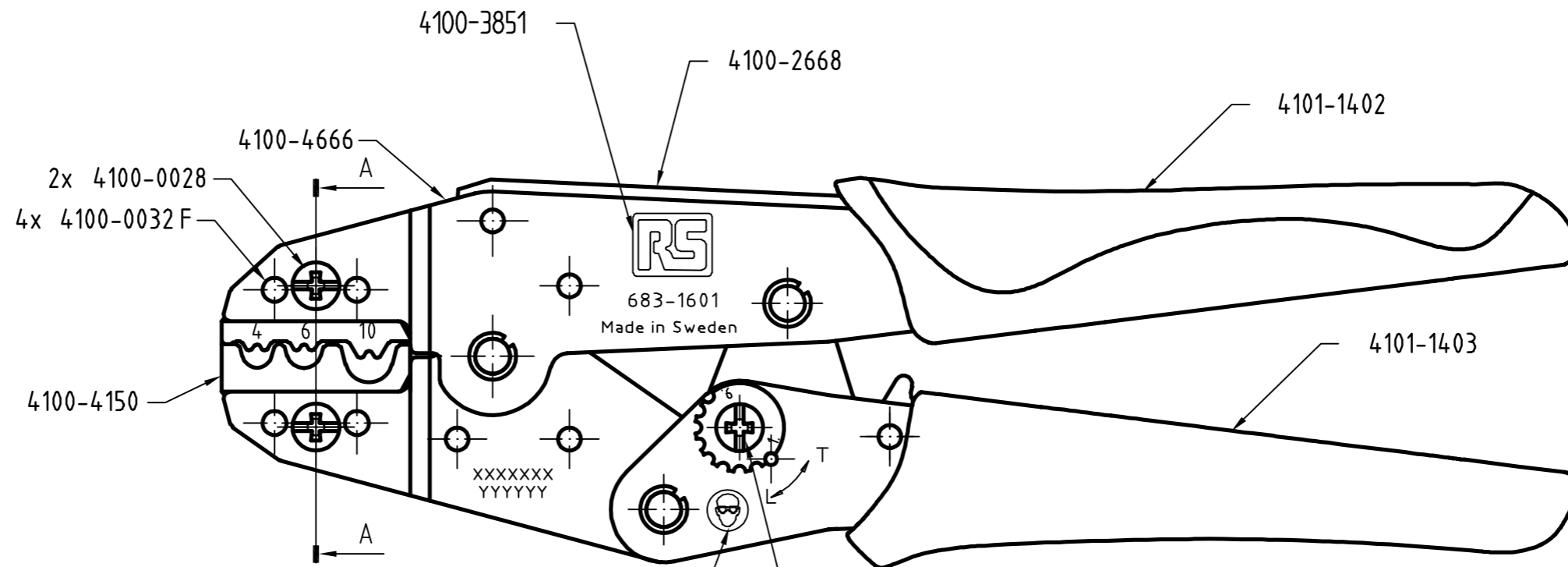
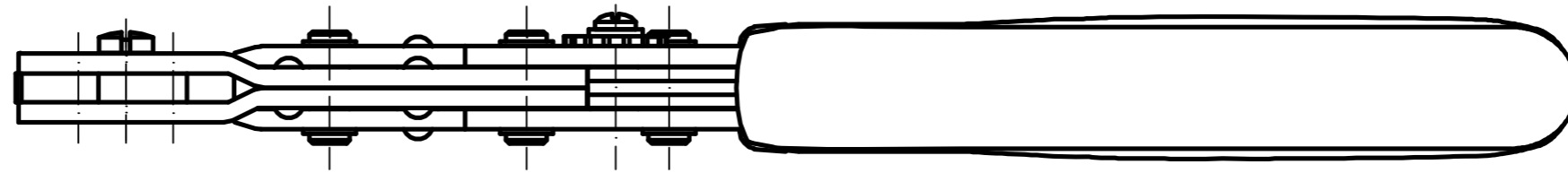
NOM DIM MM		TOL CLASS		
From	To	A	B	C
(1)	6	±0.05	±0.1	±0.2
(6)	30	±0.1	±0.2	±0.5
(30)	100	±0.15	±0.3	±0.8
(100)	300	±0.2	±0.5	±1.2
(300)	1000	±0.3	±0.8	±2

Hål / Holes H13

Skarpa kanter brutna där ej annat anges.  
No sharp edges unless otherwise specified.

LASERMÄRKNING/LASER MARKING:  
TEXTFONT: GEN-ISO  
Datumkod / Date code "YYYYYY"  
Serienummer / Serial number "XXXXXXX"

Rev	Change order	Change: A = Added W = Was D = Deleted C = Changed	Date	Sign
-----	--------------	---	------	------



- 4101-2610
- 4101-2614
- 4100-3776
- 4101-6494 C - placering position B

Packas enligt förpackningsritning 4101-2725  
Packed according to drawing 4101-2725

FÖRSPÄNNING / PRELOAD: 200 ± 40 N

Tolkmått / Gauge dimensions (mm)		
URTAG	Gåtolk	Stopptolk
NEST	GO	NO GO
4	∅3.05	∅3.30
6	∅3.03	∅3.28
10	∅3.85	∅4.10

Material		Behandling/Treatment		Status Work.etc.	
Konstr/Design SE	Ritad/Drawn SE	Datum/Date 2009-05-18	Skala/Scale 1:1	Kontr/Checked	Godk/Approved Anne/Blank
Benämning/Denomination <b>KRIMPVERKTYG 683-1601 CRIMPING TOOL</b>				Vikt/Weight,gram 0.620 g	Art grp 012
				Ritn nr/Drawing no <b>43003716</b>	REV <b>000</b>