

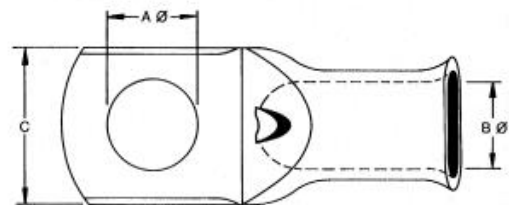
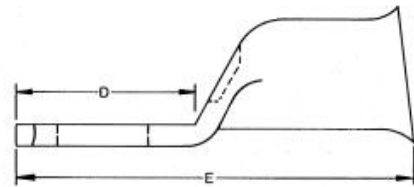


## Datasheet

ENGLISH

Stock No: 119-249

# RS Pro Butt Wire Splice Connector, Tin Plated 70 mm<sup>2</sup>



## Product Details

### RS Butt Splice Tube Terminals

A range of heavy duty copper butt splice crimp terminals manufactured from a pure grade copper base to BS2871 and electro-tin plated to BS1872, 1984. These HD copper butt splice crimp terminals are for use on multi-stranded cables and are available in a variety of sizes.

For suitable crimp tools please see stock numbers 241-4710, 445-611 and 445-885

### Note

Terminal diameter stated is the Inside diameter.

### Tube Terminals

Heavy duty tube terminals and butt splices for terminating cables in the 6mm<sup>2</sup> to 150mm<sup>2</sup> size range. The terminals are available with different bolt hole diameters. Both ring terminals and butt splices are manufactured from tinned copper tube with a flared cable entry to ease termination (Excepting 6mm<sup>2</sup> size). Rated to 150°C.



ENGLISH

## Specifications:

Splice Type	Butt
Wire Size	70 mm <sup>2</sup>
Overall Length	43mm
Diameter	12mm
Insulation	Uninsulated
Shrouded	Unshrouded
Contact Material	Copper
Contact Plating	Tin