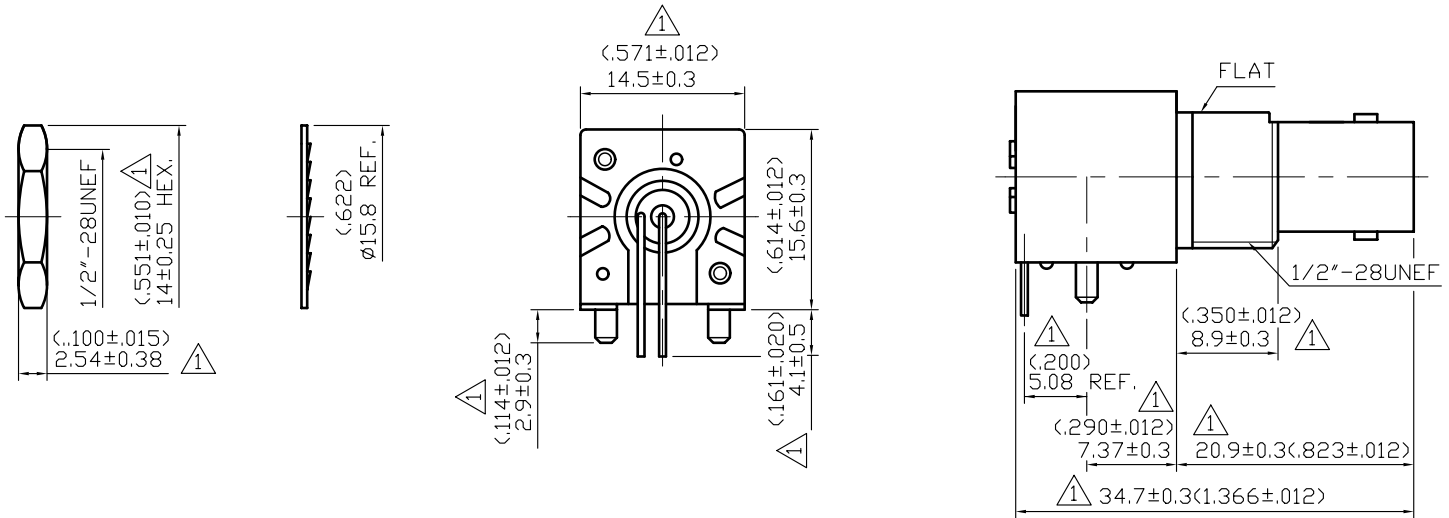


NO	DESCRIPTION	DATE
△	ADD 5.08 REF. ; DEL 8.6 REF. 3.2±0.38 → 2.9±0.3 ; 4±0.38 → 4.1±0.5 14.5 REF. → 14.5±0.3 Ø2X2 → Ø2.00X2 ; 2.5 → 2.54±0.38 Ø0.9X2 → Ø0.90X2 ; 8.6 REF. → 8.9±0.3 14.0 HEX. → 14±0.25 HEX. 7.37±0.38 → 7.37±0.3 20.8 REF. → 20.9±0.3 34.8 REF. → 34.7±0.3 12.0 REF. → 11.7 Ø12.9 REF. → Ø12.83 DEL CONTACT RESISTANCE -55° C TO +85° C -40° C TO +60° C DEL SALT SPRAY; HUMIDITY MIL-STD-1344,METHOD 1001,COND.B. → MIL-STD-202,METHOD 107,COND.B. MIL-STD-1344,METHOD 2004,COND.G. → MIL-STD-202,METHOD 204,COND.B. BODY → HOUSING MODIFICATION MATERIAL	04.17.09'



SPECIFICATIONS:

MECHANICAL CHARACTERISTICS:

MATING/UNMATING--500 CYCLES

ELECTRICAL CHARACTERISTICS:

NORMAL IMPEDANCE-- 75 OHMS

FREQUENCY RANGE-- 0-1 GHz

TESTING VOLTAGE-- 500 VOLTS RMS

DIELECTRIC WITHSTANDING VOLTAGE-- 1500 VOLTS RMS

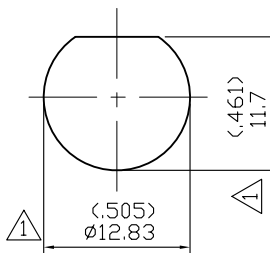
INSULATION RESISTANCE-- 5000 MEGOHMS MIN.

ENVIRONMENTAL CHARACTERISTICS:

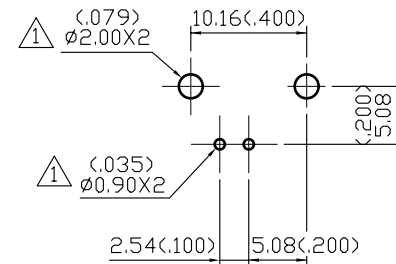
TEMPERATURE RANGE-- -40° C TO +60° C △

THERMAL SHOCK-- MIL-STD-202,METHOD 107,COND.B. △

PHYSICAL SHOCK-- MIL-STD-202,METHOD 204,COND.B. △



MOUNTING HOLE



RECOMMEND PCB LAYOUT

8	LOCK WASHER	S50C	1	NICKEL	△
7	NUT	BRASS	1	NICKEL	
6	CENTER CONTACT	PHOSPHOR BRONZE WITH GOLD PLATING AT CONTACT AREA TIN PLATING AT TAIL	1	GOLD TIN	△
5	INSULATION	POLYPROPLENE UL 94HB	1	NONE	△
4	SOLDER PIN	COPPER WIRE	1	TIN	△
3	BODY	ZINC ALLOY	1	NICKEL	△
2	HOUSING	PBT+15% GLASS FIBER (UL 94 V-0)	1	NONE	△
1	MOUNTING POST	BRASS	2	TIN	△
NO	DESCRIPTION	MATERIAL	Q'TY	FINISH	

APPROVED

by

DATE:



DESCRIPTION		BNC RIGHT ANGLE PCB MOUNT JACK RECEPTACLE (VALOX HOUSING)							
製圖	DRAWN	TOLERANCE	品名	13-60-2	D.G.Z	日期	DATE	版次	REV.
	CHECK	.XX ±0.2	TITLE	\ROHS COMPLIANT <75>		03.02.98'		B-1	
檢圖	APPROVAL	.XXX ±0.1	單位	DWG.NO.	13-0455				
	認定	ANGLE ±5°	比例	SCALE	RS 5465159				