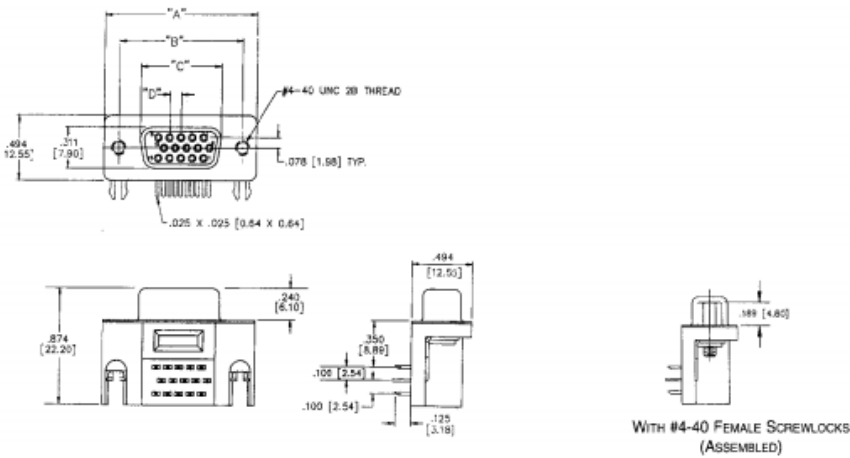


Datasheet

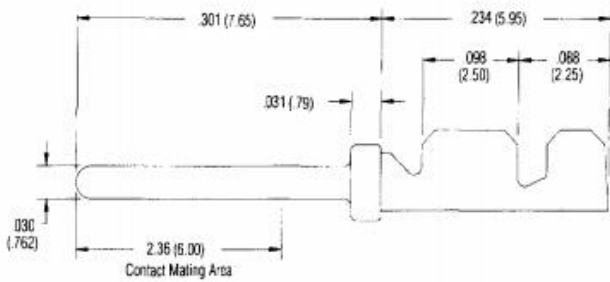
RS 2.29mm Pitch Straight Crimp D-Sub Connector Housing, Socket, 26 Way

RS Stock number [484-846](#)

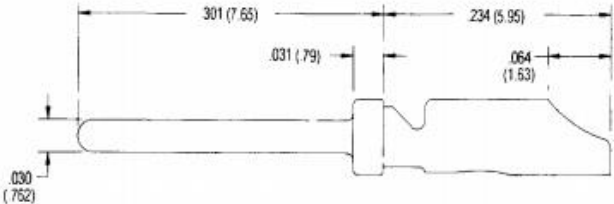
Dimensions: (mm)



Crimp and Poke Plug Contact



Solder and Poke Plug





Specifications

Density means the connector uses small size #22 contacts for a higher pin count in a standard size shell. Also accepts standard D-Subminiature accessories (hoods, back shells etc.) per the following chart:

Shell Size	D-Sub no. of pins	Standard D-Sub no. of pins
E	15	9
A	26	15
B	44	25
C	62	37

Materials

Connector Shell : Steel with tin plating (grounding indents on plug)

Contact Material: Phosphor bronze (stamped)

Contact Plating:

Socket – Gold flash or 30uin. gold in mating area and tin/lead on tails. Nickel all over.

Plugs – gold flash or 30uin. gold in mating area and gold flash on remainder. Nickel all over

Environmental

Operating temperature: -55degC to 125deg C

Shock: 50G peak per MIL-STD-202, method 213, condition G

Vibration: 12 cycles in three perpendicular directions @ 10-200Hz per MIL-STD-202, method 204, condition D

Moisture Resistance: 0-95% relative humidity @ 40degC for 96 hours per MIL-STD-202, method 13

Electrical

Withstanding voltage: Minimum 1000V RMS @sea level

Current rating: 3 amps

Contact Resistance: 15 millihoms maximum

Insulation resistance: 5000 megohms maximum (initial) /1000 megohms (minimum) after environmental testing

Mechanical

Individual contact insertion and separation force (min/max): 0.7z./12oz.

Durability:

Plugs- 200 mating cycles

Sockets – 200 mating cycles



Connectors

Offered with 120 mounting holes

Shells offered with tin plating and grounding indents

These connectors are designed to accommodate one repair cycle

Contacts (Not included with connectors, order separately)

Available with gold-flash plating or 30uin. gold.

Crimp and poke versions are offered in reels of 15,000 or 300 contacts

Solder and poke contacts are packed loose

Will accommodate 22-30 AWG wire

Order contacts separately

Termination Tooling

Semi- automatic stripper crimper tool for 15,000 reels

Crimp contact hand tool for 300 piece reels

Semi automatic hand crimping tool for individual contact termination

Contact insertion/ extraction tool

Materials

Insulator material : black UL94 V-0 glass filled nylon