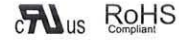
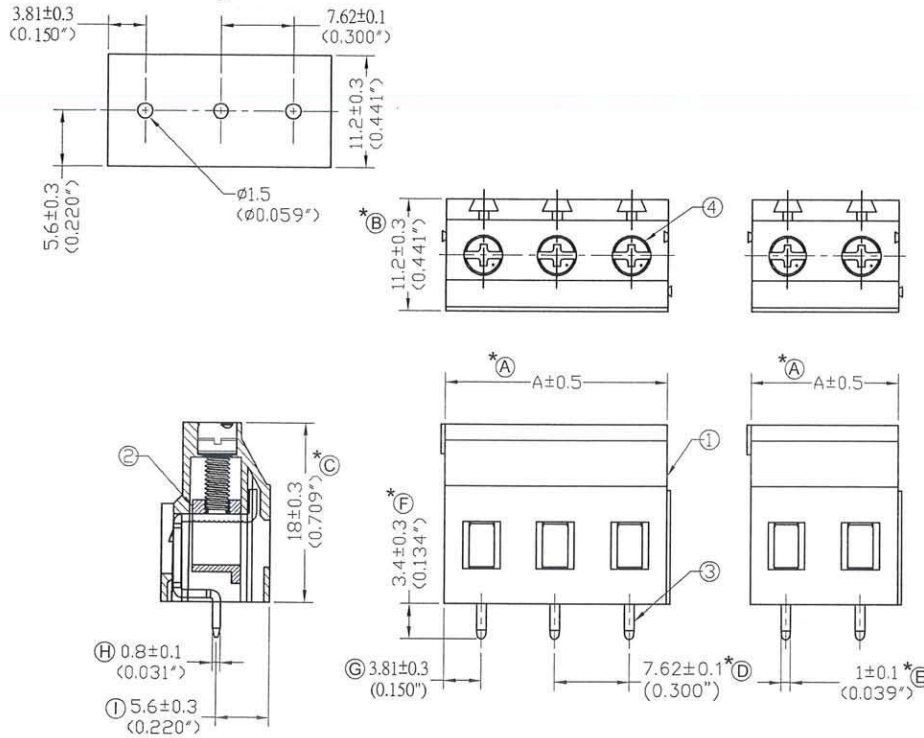


2 to 3 way PCB terminal block 7.62mm

Type No. : MB422-762MA
 Order No. : MB422-762MAxxZ



PCB Layout



Pitch : 7.62mm (0.300inch)

Poles	A(mm)	A(inch)	Poles	A(mm)	A(inch)
2	15.24	0.600	15	114.30	4.500
3	22.86	0.900	16	121.92	4.800
4	30.48	1.200	17	129.54	5.100
5	38.10	1.500	18	137.16	5.400
6	45.72	1.800	19	144.78	5.700
7	53.34	2.100	20	152.40	6.000
8	60.96	2.400	21	160.02	6.300
9	68.58	2.700	22	167.64	6.600
10	76.20	3.000	23	175.26	6.900
11	83.82	3.300	24	182.88	7.200
12	91.44	3.600	25	190.50	7.500
13	99.06	3.900			
14	106.68	4.200			

Current rating : 27Amp AC300V
 Insulation withstands volt : AC2000V min
 Insulation resistance : >2000MΩ DC500V
 Operation temperature : -40°C to +105°C
 Wire strip length : 4mm~5mm
 Wire range : 12~24 AWG
 Screw torque : 5.0 lb-inch

文件管制
 JUL 07, 2011
 文管中心

CONFIRMED & ACCEPTED BY

	Material	Plating/Finish	Remark
1	Insulating body Polyamide 66(UL94V-0)		Green
2	Cage clamp Steel	Zinc plated	
3	Terminal Brass	Tin plated	
4	Screw Steel	Zinc plated	

Order No.	MB422-762MAxxZ	VERSION	B	CONFIRMED BY	Widom...
SHEET OF	2/2	METRIC	MM	DRAWN BY	DATE
					2011/07/07
				GENERAL MANAGER	

單據編號 : QR-0703-08 版次 : A版

