

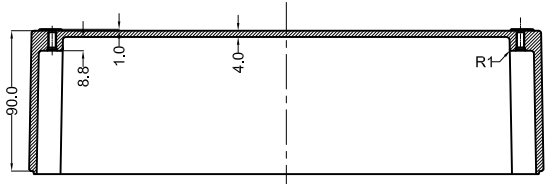
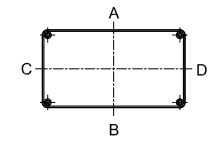
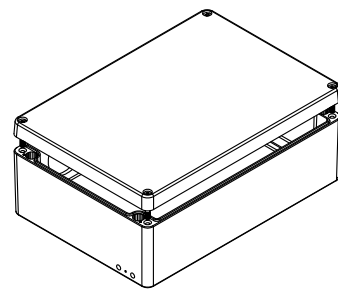
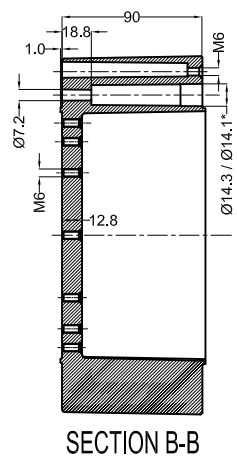
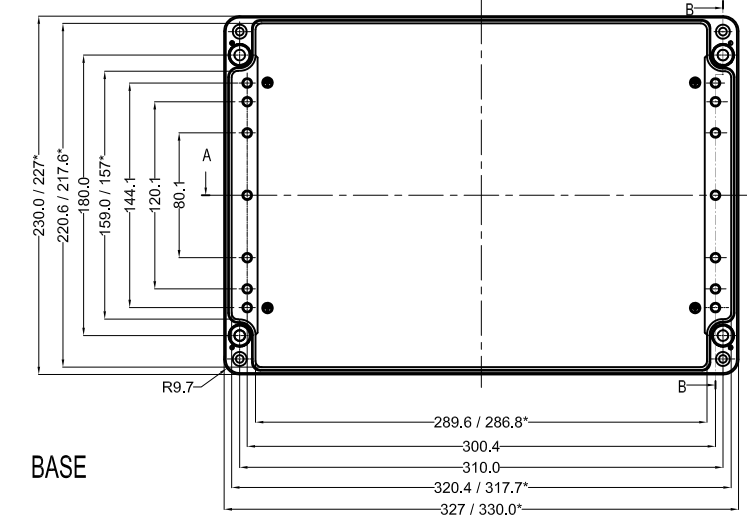
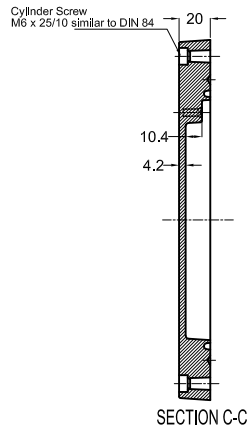
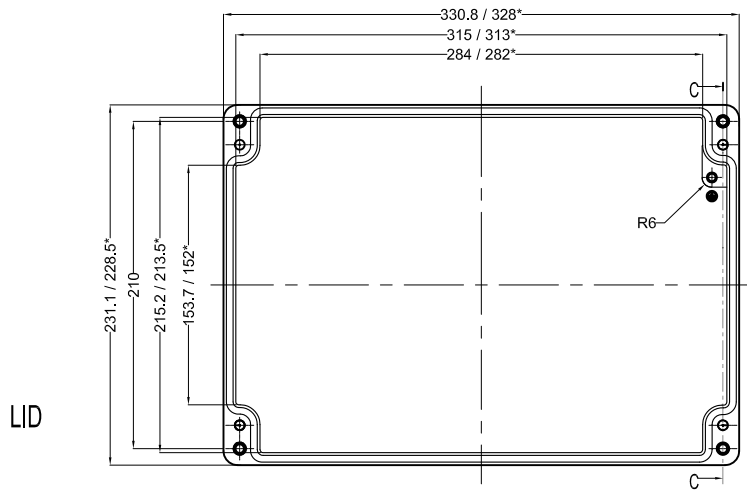


**GENERAL SPECIFICATION AND AREA CLASSIFICATION:**

1. MATERIAL COMPOSITION - AISI 12
2. DEGREE OF PROTECTION IP66 AS PER IEC 60529 : 1989 +A1 : 2000
3. SERVICE TEMPERATURE RANGE : - 50 °C to +135 °C
4. ALL DIMENSIONS ARE IN mm. UNLESS STATED OTHERWISE.
5. SURFACE WILL PLAIN FINISH OR POWDER COATED.(RAL-7001)
6. THE JUNCTION BOX WILL BE MARKED WITH
7.  II 2 G Ex e IIC Gb  
0539 II 2 D Ex tb IIIC Db IP 66  
DEMKO 13 ATEX 1327771U  
IECEX UL 13.0042U

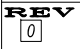
8. TRADE MARK 

 NOT TO BE REVISED WITHOUT NOTIFICATION TO THE ExCB/NOTIFIED BODY



SECTION A-A

Opening Detail (Size)	NO OF HOLES SIDE A/B	Min. Distance between the opening for Side A/B (mm)	NO OF HOLES SIDE C/D	Min. Distance between the opening for Side C/D (mm)	Opening Detail (Size) PG	NO OF HOLES SIDE A/B	Min. Distance between the opening for Side A/B (mm)	NO OF HOLES SIDE C/D	Min. Distance between the opening for Side C/D (mm)	Min. Distance of last opening from the enclosure end on side A/B (mm)	Min. Distance of last opening from the enclosure end on side C/D (mm)
M12	13	25	7	25	Pg.7	13	25	7	25	48	53
M16	13	25	7	25	Pg.9	13	25	7	25	48	53
M20	30	9	14	12	Pg.11	33	8	18	8	23	40
M25	14	15	8	15	Pg.13.5	30	8	14	13	31	41
M32	11	18	3	26	Pg.16	26	10	10	10	48	40
M40	5	22	3	18	Pg.21	14	14	8	12	20	37
M50	4	24	2	30	Pg.29	6	13	3	13	28	49
M63	3	32	2	17	Pg.36	4	28	2	43	38	43
-	-	-	-	-	Pg.42	4	20	2	26	26	47
-	-	-	-	-	Pg.48	4	28	2	21	23	45

QUANTITY 1	MATERIAL :- <b>ALs112 (Din230)</b>	MACH.NAME -	DATE 17/08/14	SIGN MANOJ	NAME DRAWN
		TITLE :- JUNCTION BOX 330 x 230 x 110	17/08/14	G. K.	CHECKED
		<b>Raychem RPG (P) Limited</b>	17/08/14	J. B.	APPROVED
WEIGHT: -		FINISH: NATURAL	SCALE		PARTNO. 0
TOLERANCE ±0.2 DIMENSIONS ±0.2 HOLES ±1.0° ANGLES		ALL DIMENSION ARE IN MM RJ 18			DRG. NO. <b>EX-AJB-330230110</b>

SR.NO.	PART NAME	DRAWING NO.	MATERIAL	QTY
5	SILICON GASKATE	JB-02GSK-17	SILICON	1
4	JB EXTERNAL EARTHING SET	-	AISI 304	1
3	LID MOUNTING SCREW	M6 JB-SCR-LD-00	AISI 304	4
2	JB-EARTHING SCREW	-	MS COPPER PLATED	2
1	JUNCTION BOX Ex-330 x 230 x 110	Ex-330230110	AISI 12	1

PROPERTY OF RaychemRPG (P) LTD.  
ALL RIGHTS RESERVED AND/OR PHOTOCOPIING THIS DOCUMENT  
TO A PERSON WITHOUT RaychemRPG (P)LTD. WRITTEN AUTHORIZATION IS PROHIBITED