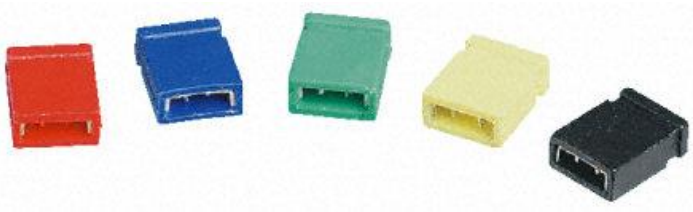


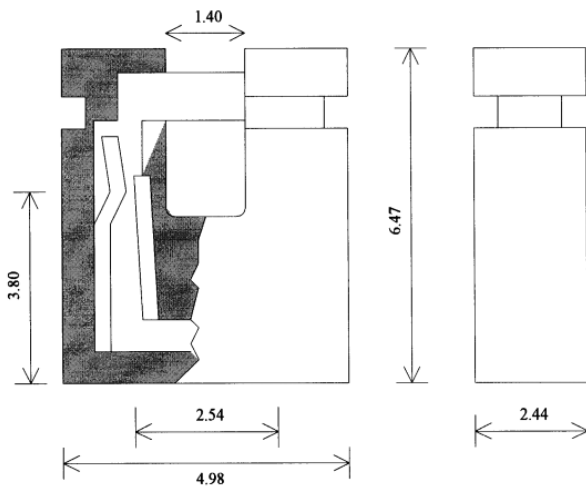
Datasheet

Female Straight Green Closed Top 2 Way 1 Row 2.54mm Pitch

RS Stock 251-8553



Dimensions: (mm)



Specifications

INSERTION FORCE	340 GRAMS MAX.
EXTRACTION FORCE;	50 GRAMS MIN.
CURRENT RATING	1 AMP MIN.
CONTACT RESISTANCE	20m. ohms MAX.
INSULATION RESISTANCE	1000 M ohms MIN.
WITHSTANDING VOLTAGE	1000 Vrms MIN.
OPERATING TEMPERATURE	-55 TO +105°C
INSULATOR MATERIAL	PBT UL94V-O
INSULATOR COLOUR	GREEN
CONTACT MATERIAL	CONTACT RESISTANCE
CONTACT PLATING	3 to 5 microns Tin over Copper