

Datasheet

ENGLISH

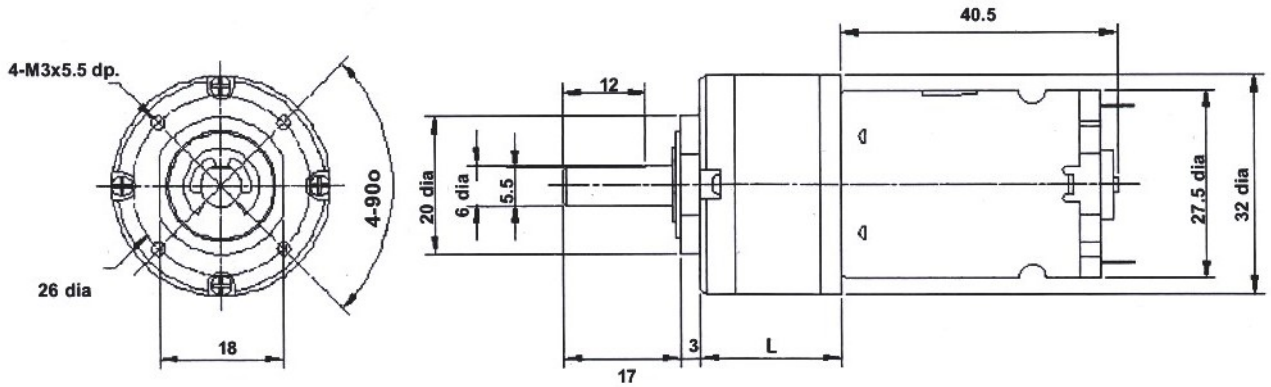
RS PRO, 12 V dc, 1482 gcm, Brushed DC Geared Motor, Output Speed 431 rpm

Stock No: 834-7663



Specifications:

Output Speed	431 rpm
Supply Voltage	12 V dc
Maximum Output Torque	1482 g.cm
DC Motor Type	Brushed
Shaft Diameter	6mm
Power Rating	7.85 W
Gearhead Type	Planetary
Length	67.5mm
Width	32 (Dia.) mm
Current Rating	990 mA
Weight	187g



Ratio	L
27:1	27.0mm

Gearbox Housing material	Metal
Backlash at no-load	< 2.5°
Bearing at output	Sleeve bearings
Radial load (10mm from flange)	< 3 kgf
Shaft axial load	< 2.5 kgf
Shaft press fit force max	< 10 kgf
Radial play of shaft	< 0.08mm
Thrust play of shaft	< 0.3mm

Reduction Ratio	Rated tolerance Torque	Max momentary Tolerance Torque	Efficiency
1/27	6.0 kgf-cm Max.	18.0 kgf-cm	70%

Reduction Table RPM SUPPLY VOLTAGE	4.5v	6v	9v	12v	15v
834-7663	162	216	324	431	539

Note: Motor speeds may vary by (+) or (-) 12.5%