

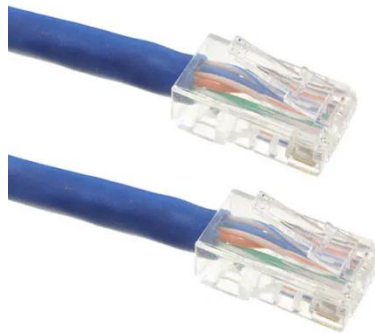


ENGLISH

Datasheet

RS PRO NETWORK PATCH CABLE, CAT 6, 550MHz, UTP, STRANDED MOD 8P8C PLUG TO PLUG 84" BLUE

Stock No: 2378613, 2378615



Product Details:

RS PRO RJ45 network path cords are compliant with the latest standards, meeting and exceeding a full range of patching performance requirements of Cat5e and Cat6. Cable are available with and without snagless boots, different length and colors to accommodate your application.

Features & Benefits:

- Compliance with the TIA/EIA T-568B or 568C
- UTP 24AWG stranded conductors for flexibility, twisted in pairs and nested in a spline to minimize crosstalk
- Support Bandwidth 250MHz & Transmitting data at speeds of up to 1000 Mbps (or 1 Gigabit per second)
- Compatible With 100 Base / 1000 Base T (gigabit) Networks
- Gold plated for accurate data transfer and corrosion-free connectivity

SPECIFICATION:

Material:

Plugs:

P1 & P2: RJ45, 8P8C, CAT 6 Plug, Long Body, Polycarbonate, Rated UL94V-0, Gold plated

Cable:

Cat 6, UTP 24 AWG X 4P, Stranded bare Copper, 550MHz

O.D.: 5.9mm ±0.15mm, UL & ETL verified, conforms to ANSI/TIA-568-C.2

Jacket color (See Chart)

Electrical:

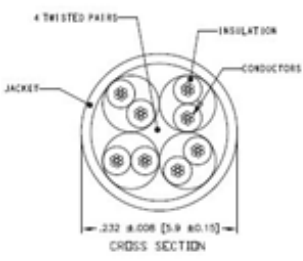
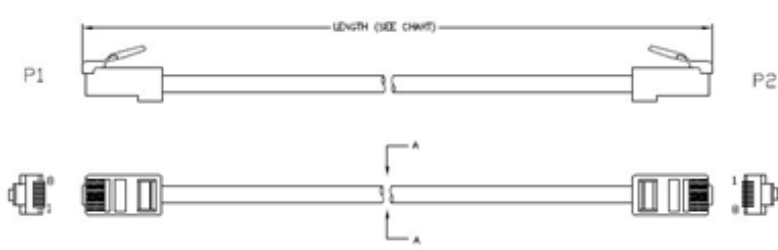
Hi-Pot: 300V DC / 10ms

100% tested for Open, shorts and crossed wires

Environmental:

Lead free, RoHS compliant.

Dimensional line drawings



PIN ASSIGNMENT (TIA 568A)

P1	P2
1	1 White/Green
2	2 Green
3	3 White/Orange
6	6 Orange
4	4 Blue
5	5 White/Blue
7	7 White/Brown
8	8 Brown

LENGTH	CODE
12.0"±.39" [305±10]	001
24.0"±.79" [610±20]	002
36.0"±1.2" [915±20]	003
60.0"±1.5" [1,525±40]	005
84.0"±1.9" [2,135±50]	007
120.0"±2.4" [3,050±50]	010
168.0"±2.4" [4,270±60]	014
300.0"±2.4" [7,625±60]	025
600.0"±2.7" [15,250±70]	050
1,200.0"±2.7" [30,500±70]	100

COLOR	CODE
BLUE	BU
ORANGE	OR
WHITE	WT
BLACK	BK
RED	RD
GREEN	GR
GRAY	GY
PURPLE	PU



General

Extra page for more complex

