

Datasheet

DPDT Rocker Switch, ON-ON

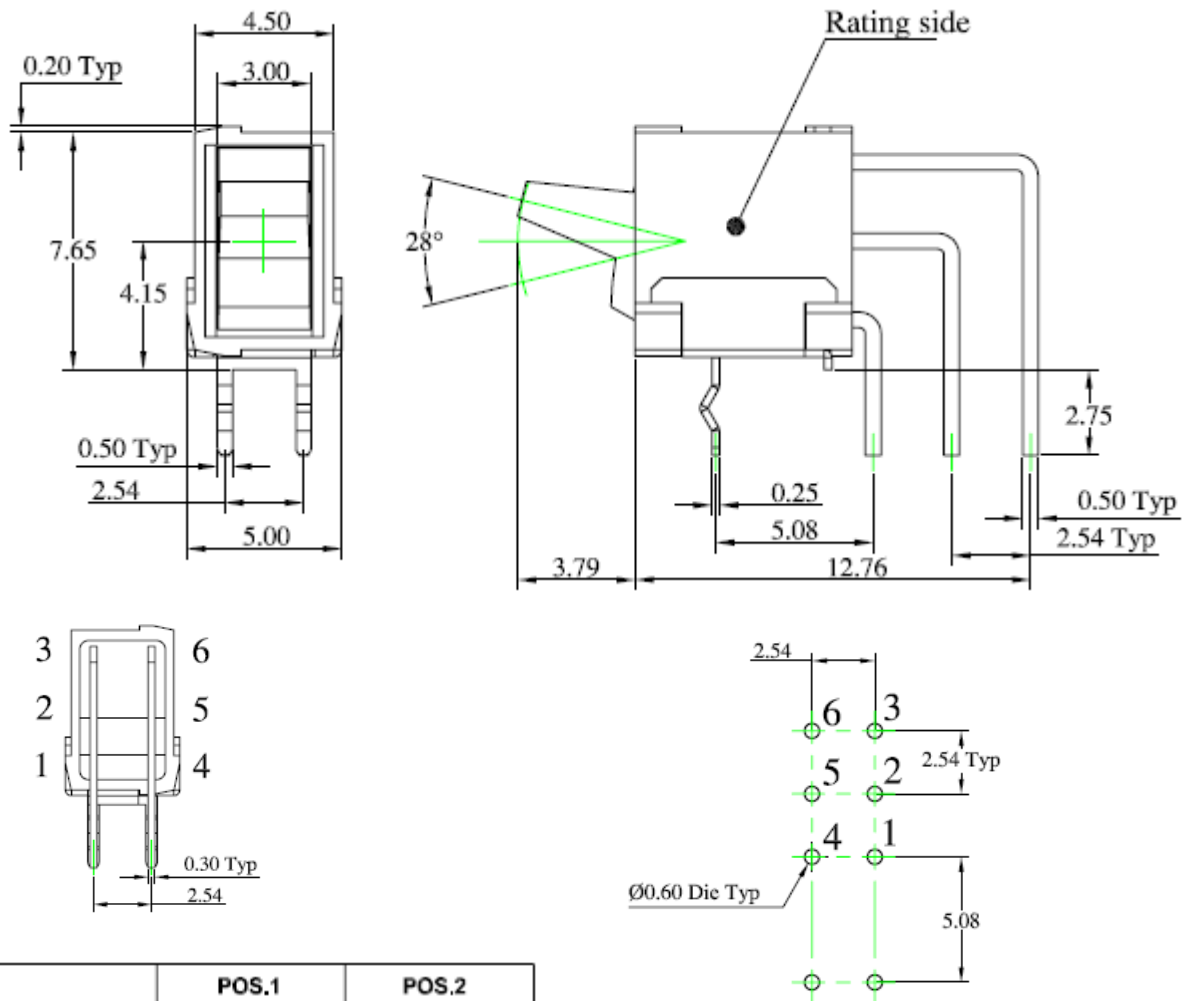
RS Stock number 734-6937



Specifications:

MECHANICAL LIFE:	40,000 make-and-break cycles.
CONTACT RATING:	0.4VA max. @ 20 V AC or DC max.
CONTACT RESISTANCE:	Below 100m Ω typically. Initial @ 2-4VDC 100mA
INSULATION RESISTANCE:	500 M Ω min.
DIELECTRIC STRENGTH:	500Vrms min. @ sea level.
OPERATING TEMPERATURE:	-30°C to 85°C.
HOUSING AND BASE:	Glass filled nylon 6/6 or 4/6, flame retardant, heat stabilized (UL94V-0)
ACTUATOR:	Glass filled nylon 6/6, flame retardant, heat stabilized (UL94V-0)
STATIONARY CONTACTS:	Copper alloy, with gold plate over nickel plate
TERMINALS:	C2680, with gold plate over nickel plate
SWITCH SUPPORT:	Brass with tin plate
RoHS:	2002/95/EC

Dimensions – inch
mm



	POS.1	POS.2
Model No.		
4UD1	ON	ON
Term. Comm.	2-3,5-6	2-1,5-4
SCHEMATIC		

SWITCH FUNCTION