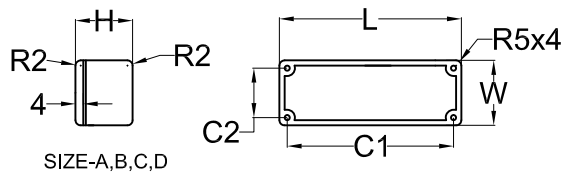


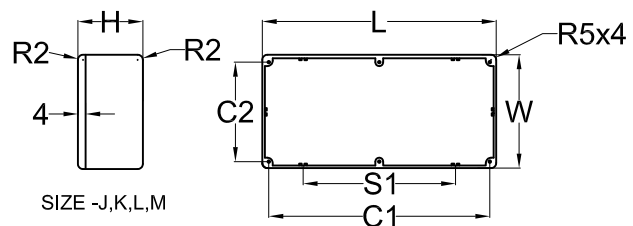


RS Stock No.517-3945
 RS Stock No.517-3951
 RS Stock No.517-3967
 RS Stock No.517-3973
 RS Stock No.517-3989
 RS Stock No.517-3995
 RS Stock No.517-4005
 RS Stock No.517-4011

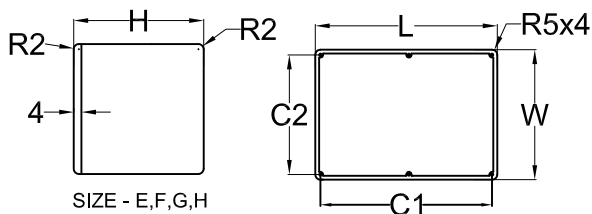
Painted Black high temperature boxes (without seal ,painted black)



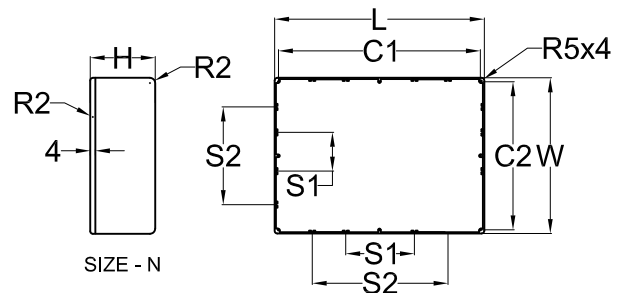
SIZE-A,B,C,D



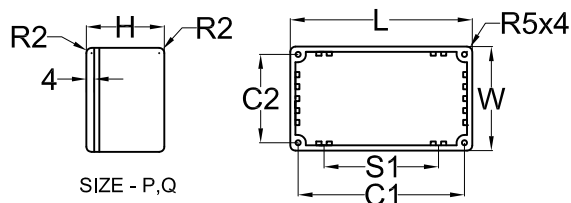
SIZE -J,K,L,M



SIZE - E,F,G,H



SIZE - N



SIZE - P,Q

RS Stock NO.	Size NO.	L	W	H	C1	C2	S1	S2	Wall Thickness
5173945	A	89.4	35.3	30.6	79.3	25.3			1.5mm
5173951	B	114.8	63.9	30.6	104.5	54.2			1.5mm
5173967	D	114.7	64.4	55.4	104.6	54.2			2mm
5173973	E	172.3	120.2	55.3	160.4	109.3			2mm
5173989	J	275.3	175.3	65.8	264.1	164.0	132.2		2mm
5173995	L	166.1	127.6	76.6	154.0	116.1	77.1		2mm
5174005	M	120.2	100.3	36.0	108.5	88.4	50.1		2mm
5174011	N	250.5	250.5	100.8	238.0	238.0	79.9	160.0	2.5mm

1. Material of the base and lid :Aluminium alloy ADC12
2. Material of the screws : Stainless M3.5x9mm Supadrive countersunk head
3. Finish:Painting
 - 3-1. Thickness:60~80 Micron (1.5um~2.0um)
 - 3-2. Colour:Pantone 4C 2X (Black RAL 9005)
4. Taper 1.5° Per side lid to base