

FEATURES

- Operating temperature range is from - 60 °C to + 300 °C
- RoHS and REACH compliant
- Silicon free

RS PRO MALE HOSE ADAPTER FOR LOCKING HOSE SELF

RS Stock No.: 2312657



RS PROfessionally Approved Products bring to you professional quality parts across all product categories. Our product range has been tested by engineers and provides a comparable quality to the leading brands without paying a premium price.

Product Description

The RS PRO male hose adapter for locking hose self is made up of brass. The working pressures and working temperatures depend on which type of tube is used, for this reason, the values must be determined in accordance with the tube's features. Hereunder, we specify the values of the maximum pressure advised for the fittings at a temperature of 20° C connected with copper tube, which has a thickness of 1 mm.

General Specifications

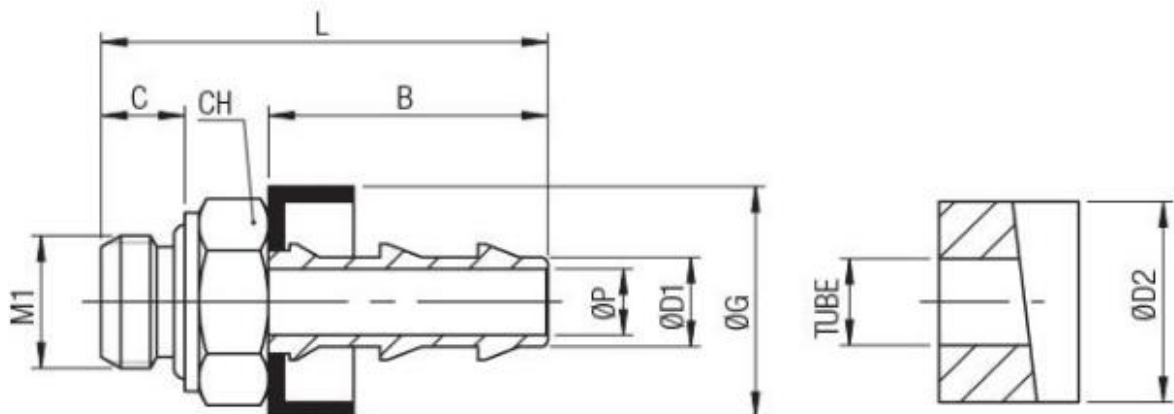
Coupling Type	Straight
Body Material	Brass
Application	Compressed Air, Pneumatic Automation, Textile, Packaging, Handling

Mechanical Specifications

Threaded Connection	1/8 in BSPP Male
Thread Standard	BSPP
Thread Gender	Male
Connector Gender	Male
Hose Inner Diameter	1/4in
Hose Outer Diameter	13mm
Thread Size	1/8in

Similar Products

Parameters	2312502	2312503
Brand	RS PRO	RS PRO
Coupling Type	Straight	Straight
Body Material	Brass	Brass
Maximum Working Pressure	10bar	10bar
Connector Gender	Male	Male
Hose Inner Diameter	4mm	6mm
Hose Outer Diameter	11mm	11mm
Application	Compressed Air, Pneumatic Automation, Textile, Packaging, Handling	Compressed Air, Pneumatic Automation, Textile, Packaging, Handling



Tube	M1	Ø D1	Ø D2	CH	Ø G	L	B	C	Ø P	Pack.
1/4	1/8	6.5	13	13	16.7	32	20	6	4.8	10