

## FEATURES

- Triple rod cylinder
- Heavy duty
- Guided cylinder with slide bearing
- Strong resistance to side load forces
- A number of mounting points for convenient installation

# RS PRO

## Triple Rod Guided Cylinder

RS Stock No.: 2351256



### Product Description

Part No.	Bore	Stroke
2351256	20 mm	100 mm

### Features

- Triple rod cylinder
- Heavy duty
- Guided cylinder with slide bearing
- Strong resistance to side load forces
- A number of mounting points for convenient installation

### General Specifications

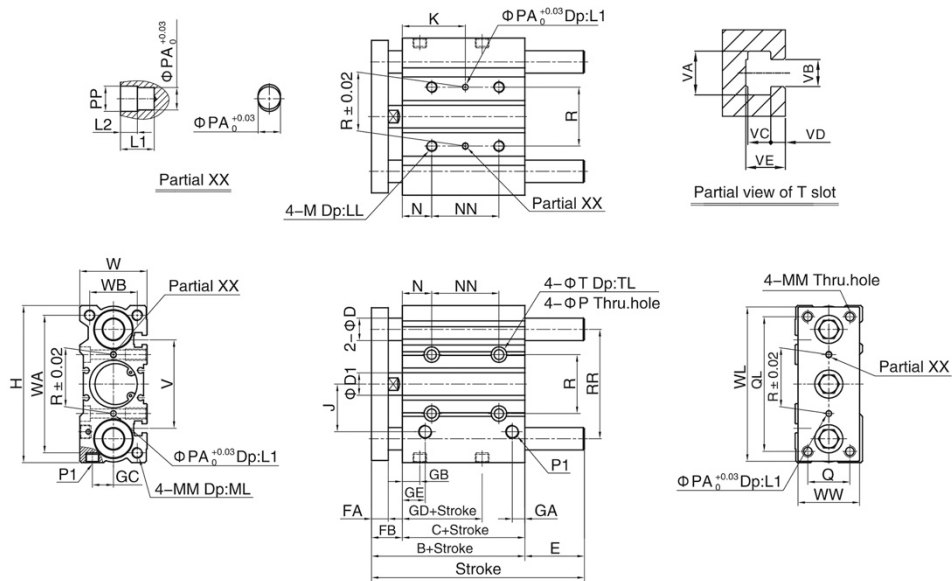
<b>Cylinder type</b>	Double acting, magnetic positioning
<b>Max. working pressure</b>	10 bar
<b>Operating temperature</b>	-20°C to +80°C (dry air)
<b>Bore size</b>	Ø 20 mm
<b>Stroke length</b>	100 mm
<b>Cushion type</b>	Rubber cushioned

### Similar Products

Part No.	Bore	Stroke
2351248	12 mm	10 mm
2351249	12 mm	20 mm
2351250	12 mm	50 mm
2351251	12 mm	75 mm
2351252	16 mm	20 mm
2351253	16 mm	30 mm
2351254	16 mm	50 mm
2351255	16 mm	75 mm
2351258	20 mm	20 mm
2351259	20 mm	50 mm
2351257	20 mm	200 mm
2351260	25 mm	50 mm
2351261	32 mm	25 mm
2351262	32 mm	50 mm
2351263	50 mm	50 mm

Technical Drawings

◎ Main Dimension



Bore\Sign	E(SGL)				E(SGM)				NN				K									
	≤30	31-100	101-200	>200	≤50	51-100	101-200	>200	≤30	31-100	101-200	>200	≤30	31-100	101-200	>200						
12	0	13	43	-	0	13	43	-	20	40	110	-	15	25	60	-						
16	0	19	49	-	0	19	49	-	24	44	110	-	17	27	60	-						
20	0	27	51	69	0	27	51	69	24	44	120	200	29	39	77	117						
25	0	28.5	51	68.5	0	28.5	51	68.5	24	44	120	200	29	39	77	117						
Bore\Sign	≤50	51-100	101-200	>200	≤50	51-100	101-200	>200	≤40	41-100	101-200	>200	≤40	41-100	101-200	>200						
32	5.5	42.5	58.5	80.5	5.5	42.5	58.5	80.5	24	48	124	200	33	45	83	121						
40	0	36	52	74	0	36	52	74	24	48	124	200	34	46	84	122						
50	4	46	62	89	4	46	62	89	24	48	124	200	36	48	86	124						
63	0	41	57	84	0	41	57	84	28	52	128	200	38	50	88	124						
Bore\Sign	B	C	FA	FB	P1	GA	GB	GC	GD	GE	R	RR	N	P	PA	PP	T	TL	M	LL	D1	
12	42	29	8	13	M5X0.8	7.5	11	8	13	11	23	41	5	4.2	3	3.5	8	4.5	M5X0.8	10	6	
16	46	33	8	13	M5X0.8	8	11	10	15	11	24	46	5	4.2	3	3.5	8	4.5	M5X0.8	10	8	
20	53	37	10	16	1/8"	9	10.5	10.5	12.5	10.5	28	54	17	5.2	3	3.5	9.5	5.5	M6X1.0	12	10	
25	53.5	37.5	10	16	1/8"	9	11.5	13.5	12.5	11.5	34	64	17	5.2	4	4.5	9.5	5.5	M6X1.0	12	12	
32	59.5	37.5	12	22	1/8"	9	12.5	15	7	12.5	42	78	21	6.9	4	4.5	11	7.5	M8X1.25	16	16	
40	66	44	12	22	1/8"	10	14	18	13	14	50	86	22	6.9	4	4.5	11	7.5	M8X1.25	16	16	
50	72	44	16	28	1/4"	11	12	21.5	9	14	66	110	24	8.7	5	6	14	9	M10X1.5	20	20	
63	77	49	16	28	1/4"	13.5	16.5	28	14	16.5	80	124	24	8.7	5	6	14	9	M10X1.5	20	20	
Bore\Sign	D(SGL)	D(SGM)	J	W	WA	WB	WL	WW	H	Q	QL	MM	ML	L1	L2	V	VA	VB	VC	VD	VE	
12	6	8	18	26	50	18	56	22	58	14	48	M4X0.7	10	6	3	37	7.4	4.4	3.7	2	6.2	
16	8	10	19	30	56	22	62	25	64	16	54	M5X0.8	12	6	3	38	7.4	4.4	3.7	2.5	6.7	
20	10	12	25	36	72	24	81	30	83	18	70	M5X0.8	13	6	3	44	8.4	5.4	4.5	2.8	7.8	
25	12	16	28.5	42	82	30	91	38	93	26	78	M6X1.0	15	6	3	50	8.4	5.4	4.5	3	8.2	
32	16	20	34	48	98	34	110	44	112	30	96	M8X1.25	20	6	3	63	10.5	6.5	5.5	3.5	9.5	
40	16	20	38	54	106	40	118	44	120	30	104	M8X1.25	20	6	3	72	10.5	6.5	5.5	4	11	
50	20	25	47	64	130	46	146	60	148	40	130	M10X1.5	22	8	4	92	13.5	8.5	7.5	4.5	13.5	
63	20	25	55	78	142	58	158	70	162	50	130	M10X1.5	22	8	4	110	17.8	11	10	7	18.5	