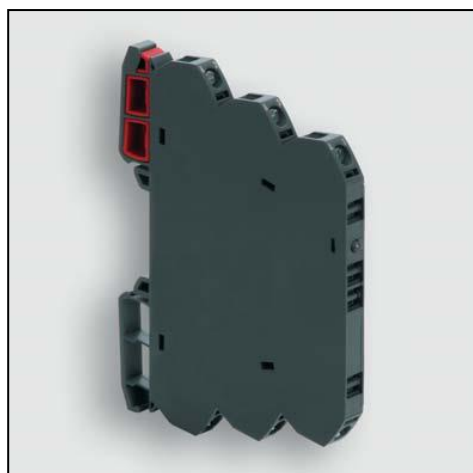


Datasheet

LCIS Relay Module

RS Stock number 888-6859



Identification	Type Part-No.	LCIS-SRKF-DC-3L-200320-S 8886859
-----------------------	------------------	-------------------------------------

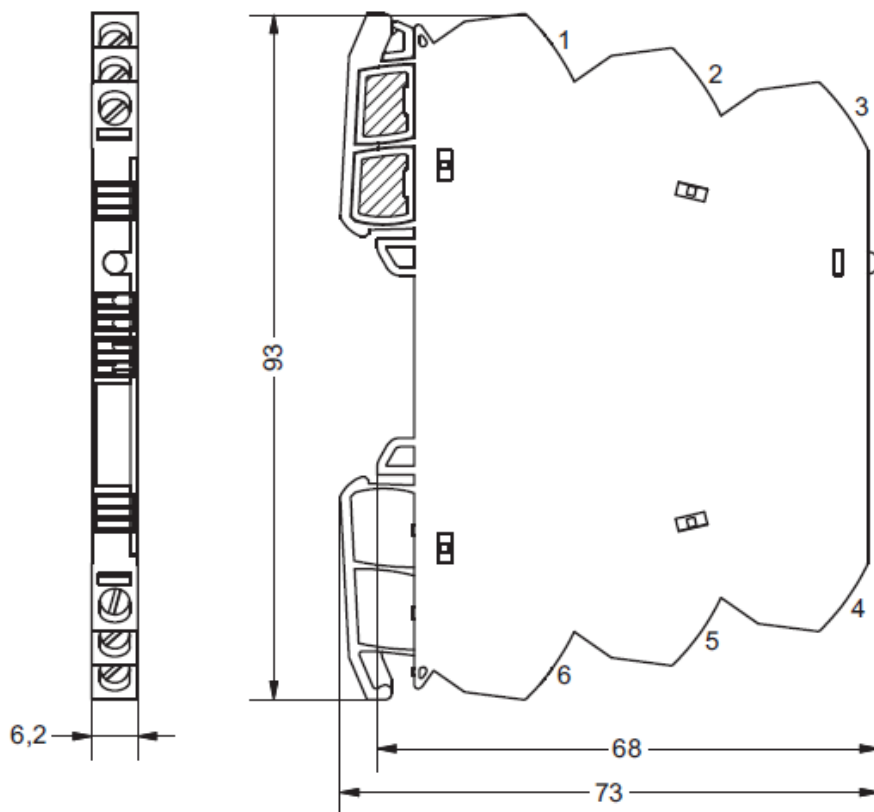
Input	
Input voltage range	11.0 V – 30.0 V
Protection device	Supressor diode
Status Indication	LED green

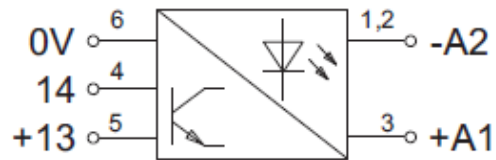
Load Side	
Switching element	MosFet, NO contact
Min. switching voltage	DC 10 V
Max. switching voltage	DC 30 V
Min. switching current	5 mA
Max. switching current	2 A
Leakage current	< 100 µA
Switch-on delay	< 0,3 ms
Switch-off delay	< 0,4 ms
Switching frequency	100 Hz
Protection device output	Supressor diode

General	
Housing material	PA 6.6 (UL 94 V-0)
Protection class	IP 20

Field installation	rail TS 35 (EN 60175)
Insulation voltage input/output	4.0 kV _{eff}
Safe isolation	yes
Operation temperature range	-25 °C – 60 °C
Storage temperature range	-40 °C – 85 °C
Dimensions (w x h x d)	6.2 x 93.0 x 73.0 mm
Weight (kg/piece)	0.030
Approvals	UL, CSA, GL
Termination	Screw terminal: solid 0.25 – 2.5 mm ² / AWG 20 – 14 fine stranded with ferrule 0.25 – 1.5 mm ² / AWG 20 – 16 Stripping length: 6 mm Screw driver: 3.5 x 0.5 mm

Dimensions



PIN assignment

Accessories

Accessories	Color	Article number	Type	PU
Tag holder (quantity 200)	white (5×5 mm)	8886956	LCIS-ZB-BZS-white-100	1
Tag holder (quantity 120)	white (12×6 mm)	8886950	LCOS-ZB-BZS-white-12/6	1