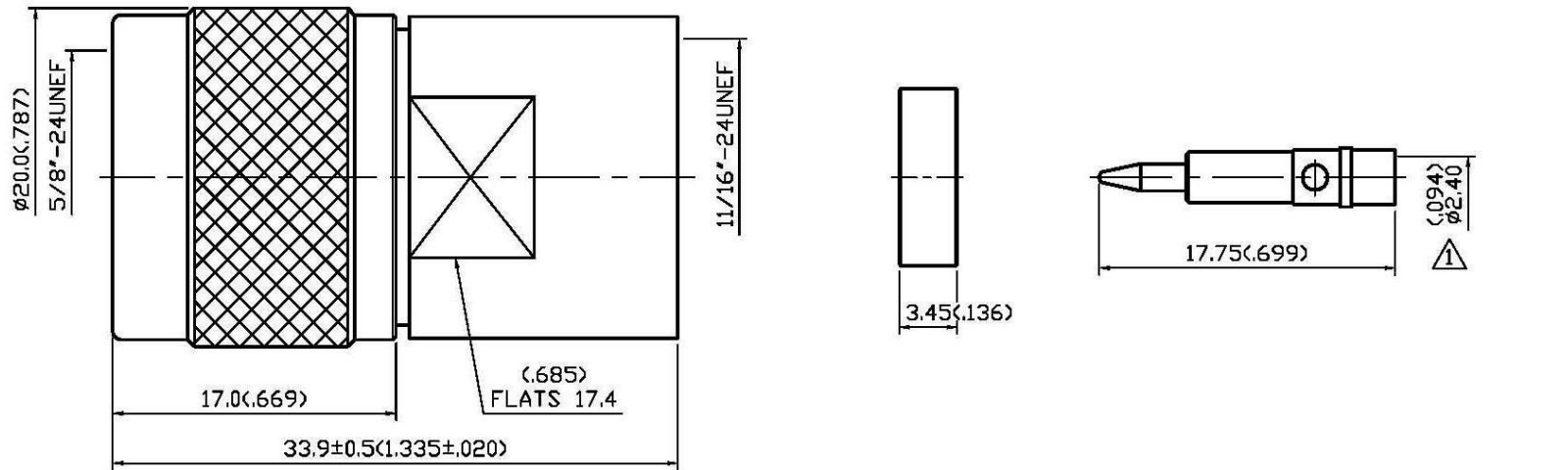


NO	DESCRIPTION	DATE
①	ø2.50 → ø2.40	06.30.03'
②	ERASE WASHER	07.18.03'
③	ADD REMARK BACKGROUND FORMAT UPDATED	09.27.07'
④	TO MODIFY THE INNER SHAPE OF BODY ⑧	03.25.09'
⑤	10.5 → 10.5 REF. ADD VOLTAGE RATING	01.15.14'



1.0 ELECTRICAL

- 1.1 FREQUENCY RANGE: DC-11 GHz
- 1.2 NOMINAL IMPEDANCE: 50 OHM
- 1.3 VOLTAGE RATING: 500 VOLTS MAX. ⚠
- 1.4 VSWR: 1.3 MAX.

2.0 MATERIALS

- 2.1 BODIES: BRASS PER JIS-C3604
- 2.2 CENTER CONTACT: BRASS PER JIS-C3604
- 2.3 INSULATION: TEFLON PER ASTM D1457 AND ASTM D1710

3.0 FINISHES AND OTHERS

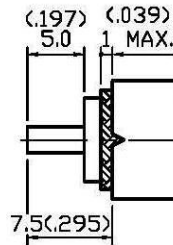
- 3.1 SEE BELOW TABLE FOR DETAILS.

4.0 MECHANICAL

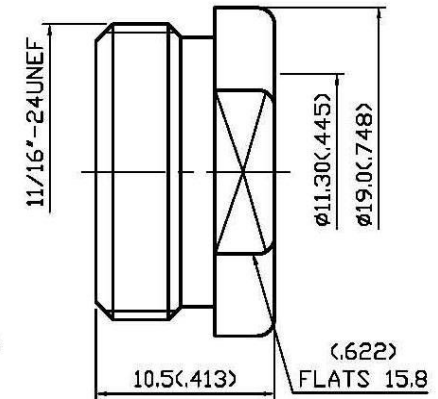
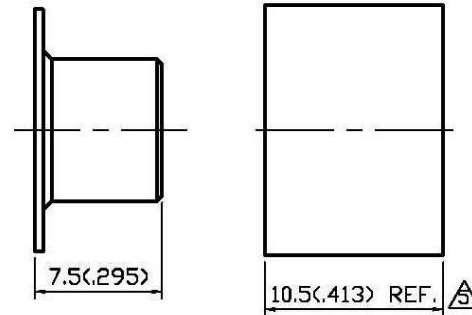
- 4.1 INTERFACE IN ACCORDANCE WITH: MIL-STD-348A
- 4.2 FOR USE WITH RG213U OR SIMILAR STYLE CABLE
- 4.3 CABLE ATTACHMENT: OUTER: CLAMP, INNER: SOLDER

5.0 ENVIRONMENTAL

- 5.1 OPERATING TEMPERATURE RANGE: -65° C TO +165° C



STRIPPING DIMENSION
SCALE 2:1



NO	DESCRIPTION	MATERIAL	Q'TY	FINISH
9	NUT	BRASS	1	NICKEL 100μ" MIN.
8	BODY	BRASS	1	NICKEL 100μ" MIN.
7	GASKET	SILICONE	1	RED
6	SLEEVE	BRASS	1	NICKEL 100μ" MIN.
5	INSULATION	TEFLON	2	NONE
4	WASHER	BRASS	1	NONE
3	SHELL	BRASS	1	NICKEL 100μ" MIN.
2	GASKET	SILICONE	1	RED
1	CENTER CONTACT	BRASS	1	GOLD

APPROVED

by _____ DATE: _____



DESCRIPTION		N STRAIGHT PLUG CLAMP	
製圖	DRAWN Yoko	TOLERANCE .X ±0.2	品名 11-01-6 T.G.N 213U
檢圖	CHECK Angela	.XX ±0.1	日期 DATE 06.16.03'
認定	APPROVAL Angela	.XXX ±0.05	版次 REV. A-5
	ANGLE ±5°	比例 3:1	單位 UNIT mm(In)
			SCALE
			DWG.NO. 11-0018