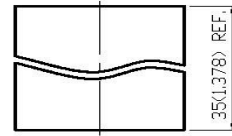
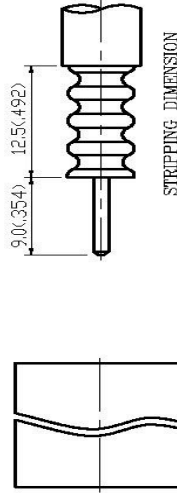
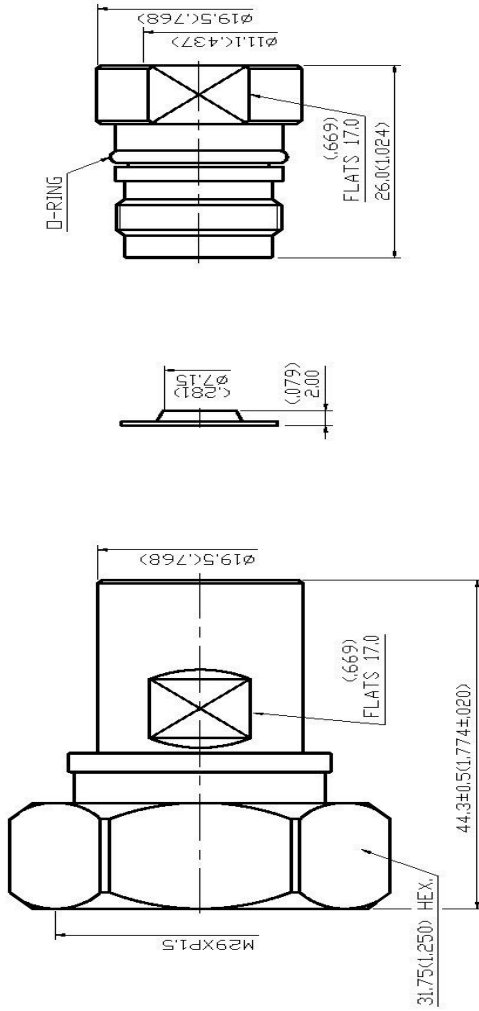


Datasheet

Stock No:1706994

# RS Pro 7/16 STRAIGHT PLUG CLAMP



### 1.0 ELECTRICAL

- 1.1 FREQUENCY RANGE: DC-7.5 GHz
- 1.2 NOMINAL IMPEDANCE: 50 OHMS
- 1.3 VOLTAGE RATING: 1000 VOLTS MAX.
- 1.4 VSWR: 1.05 MAX @ 2 GHz
- 1.1 MAX @ 3 GHz

### 2.0 MATERIALS

- 2.1 BODIES: BRASS PER JIS-C3604
- 2.2 CENTER CONTACT: BERYLLIUM COPPER PER ASTM B106 UNS C17500
- 2.3 INSULATION: TEFLON PER ASTM D1457 AND ASTM D1710

### 3.0 FINISHES AND OTHERS

- 3.1 SEE BELOW TABLE FOR DETAILS.

### 4.0 MECHANICAL

- 4.1 INTERFACE IN ACCORDANCE WITH: IEC 169-4
- 4.2 FOR USE WITH HELICAL 3/8" OR SIMILAR STYLE CABLE
- 4.3 CABLE ATTACHMENT: OUTER: CLAMP, INNER: PLUG IN

### 5.0 ENVIRONMENTAL

- 5.1 OPERATING TEMPERATURE RANGE: -40° C TO +85° C

NO	DESCRIPTION	MATERIAL	QTY	FINISH
11	HEAT SHRINK TUBE	PE	1	BLACK (ADHESIVE SHRINK)
10	O-RING	SILICONE	1	BLACK
9	NUT	BRASS	1	WHITE BRONZE 80µ MIN.
8	BRAID CLAMP	BRASS	1	WHITE BRONZE 80µ MIN.
7	BODY	BRASS	1	WHITE BRONZE 80µ MIN.
6	INSULATION	TEFLON	1	NONE
5	CENTER CONTACT	BERYLLIUM COPPER	1	SILVER 70µ MIN.
4	O-RING	SILICONE	1	BLACK
3	O-RING	SILICONE	1	RED
2	BODY	BRASS	1	WHITE BRONZE 80µ MIN.
1	SHELL	BRASS	1	WHITE BRONZE 80µ MIN.

APPROVED by DATE: \_\_\_\_\_

DESCRIPTION		7/16 STRAIGHT PLUG CLAMP	
製圖	Jackie	品名	40620108127003 HELICAL 3/8"
檢圖	XXX	TITLE	ROHS COMPLIANT (500)
認圖	Jenny	單位	mm(in)
		比例	2:1
		SCALE	
		例	
		DWG. NO.	62-0007-Z
		DATE	01.04.18
		REV.	A-0