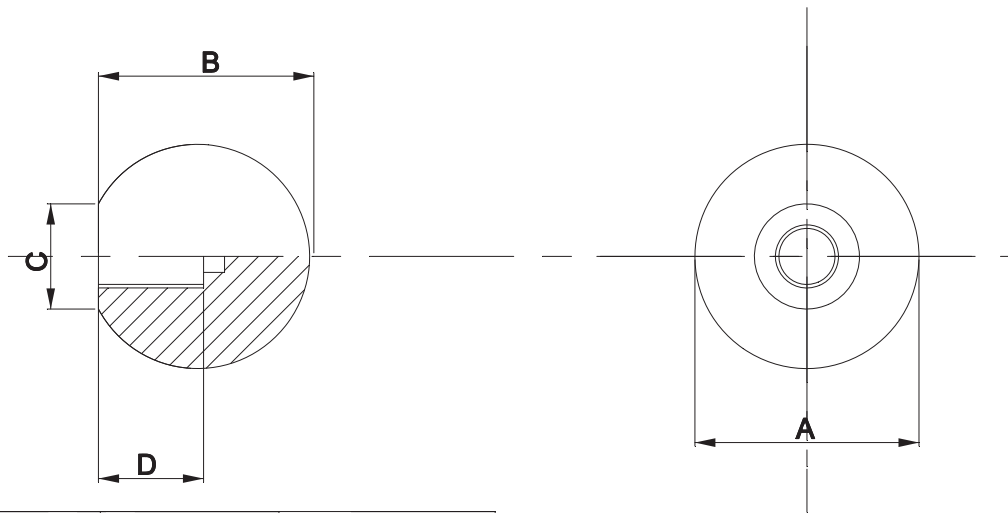


MOULDED THREADS & SELF FIXING BALL KNOBS



RS PART NO	A	B	C	D	THREADS	MINIMUM DEPTH OF THREAD:
7027796	15	14	10	11	M4	1.5 x thread diameter
7027790	20	19	10	16	M5	1.5 x thread diameter
7027787	25	23	13	16	M6	1.5 x thread diameter
7027800	32	30	14	16	M8	1.5 x thread diameter
7027780	38	36	18	20	M8	1.5 x thread diameter
7027784	45	43	18	35	M10	1.5 x thread diameter
7027793	50	49	19	40	M12	1.5 x thread diameter
7027803	20	19	10	15	5mm S/F	—
7027819	25	23	13	16	6mm S/F	—
7027813	32	30	14	15	8mm S/F	—
7027807	38	36	18	19	10mm S/F	—
7027816	50	49	19	20	12mm S/F	—

**TOLERANCES
UNLESS STATED**

A - +/-2MM
 B - +/-2MM
 C - +/-2MM
 D - +/- 1MM



Itemref	Quantity	Title BALL KNOBS (MOULDED THREADS + S/F) REV.2		Article No./Reference	
Designed by	Checked by	Approved by - date	Filename	Date 06/04/10	Scale
NYLON				Edition	Sheet 1/1