

# SARS-CoV-2 Antigen Self Test Nasal

## Testing in your hands

**Rapid and Convenient**  
**Self-Testing of COVID-19**  
**at home.**

Sensitivity:<sup>1</sup>  
**91.1 %**  
 (Ct ≤ 30)

Specificity:<sup>1</sup>  
**99.6 %**



## Kit Components

Each kit is ready-to-use and contains everything required for performing 5 tests.

- |  |   |  |
|--|---|--|
| <ul style="list-style-type: none"> <li>• Test device (5x)<br/>(individually in a foil pouch with desiccant)</li> </ul> | <ul style="list-style-type: none"> <li>• Extraction buffer tube (5x)</li> <li>• Nozzle cap (5x)</li> <li>• Sterile swab (5x)</li> </ul> | <ul style="list-style-type: none"> <li>• Instructions for Use &amp; Quick Reference Guide</li> <li>• Buffer tube holder</li> </ul> |
|--|---|--|

## Assay characteristics

<b>Test description</b>	The SARS-CoV-2 Antigen Self Test Nasal is a lateral flow test for the qualitative detection of SARS-CoV-2 nucleocapsid antigen in human nasal samples. This test is used to detect antigens of the SARS-CoV-2 virus in individuals suspected of having COVID-19. It is designed as a Self Test for patients.
<b>Test type</b>	Qualitative
<b>Sample type</b>	Nasal swab
<b>Target antigen</b>	Nucleocapsid (N)
<b>Time to result</b>	15 minutes (Readout window 15 - 30 minutes)
<b>Storage temperature</b>	2 - 30 °C / 36 - 86 °F
<b>Operating temperature</b>	15 - 30 °C / 59 - 86 °F
<b>Stability (test, opened pouch)</b>	1 hour once the test has been opened

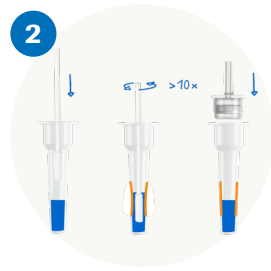
## Performing a Self Test with a nasal sample

Three simple steps and the result will be ready after 15 minutes



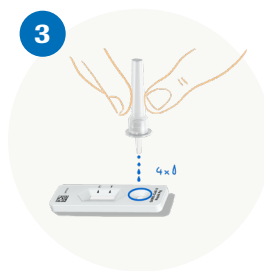
### Collect nasal sample

Blow your nose once using a tissue. Insert the swab into one nostril. Slowly slide it approx. 2 cm forward. Rotate the swab 4 times (for approx. 15 seconds) against the lining of the nasal wall, before removing it. Repeat in other nostril using the same swab.



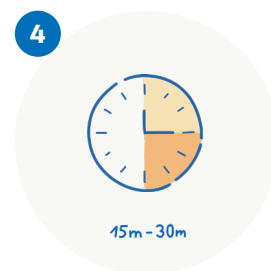
### Prepare sample

Insert the swab into an extraction buffer tube, squeeze the tube and stir the swab more than ten times. Remove the swab while squeezing the sides of the tube. Press the nozzle cap tightly onto the tube.



### Performing a test

Add 4 drops of extracted sample vertically into the specimen well of the test device.

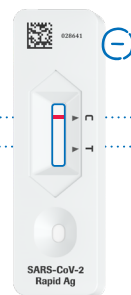
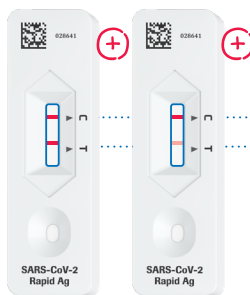


Risk of incorrect results. Do not read test result after 30 minutes.



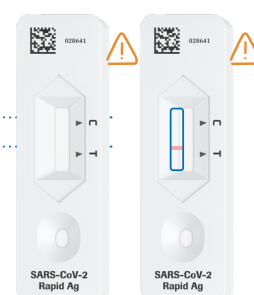
Wash hands or use hand sanitizer before and after performing a test.

## Results interpretation



**Control line C:** assures test is working correctly

**Test line T:** visible if SARS-CoV-2 antigen was detected



### Positive test result

If both the colored line C and T are visible, the test result is positive. This means the test detected the virus protein in the sample. The tested person is currently infected with SARS-CoV-2.

#### What now?



You should **self-isolate** immediately.



**Contact your doctor** and...



... you may be required to undergo a **PCR test** to confirm the test result.

### Negative test result

A visible control line C alone means the test worked correctly. The test result is negative. No virus protein could be detected in the sample.

#### What now?



There is a very **low chance** you are currently infectious to others.



Note that this **result is only valid for a limited period of time.**



Continue to **follow the hygiene guidelines.**

### Invalid test result

If there is no line visible, or only the line marked with a T, the test did not work correctly and needs to be repeated with another test device.

#### What now?



**To get a valid result you will have to do a new test** (with new test material and new sample).



Make sure to **follow the instructions** carefully.

<sup>1</sup> Source: SARS-CoV-2 Antigen Self Test Nasal package insert (V1, April 2021)

