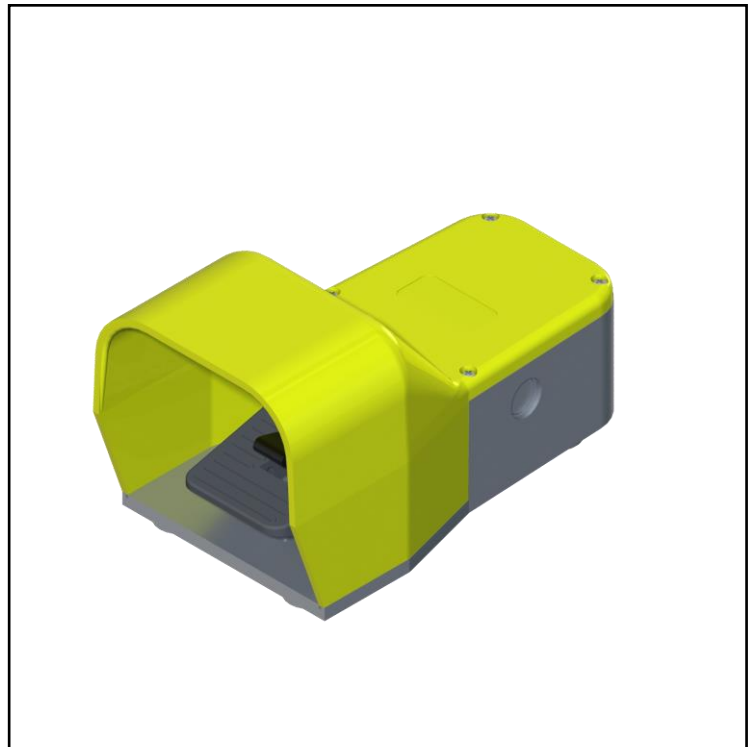


## FEATURES

- Foot Switch made in self-extinguishing UL V0 plastic material and painted aluminium
- Yellow cover and grey base
- Movement of the lever depended on the safety device notch
- Very sturdy and reliable also in harsh environment

**RS PRO foot switch, yellow aluminium cover, movement of the lever depended on the safety device notch, snap action contacts, M20 cable inlet**

**RS Stock No.: 2380564**



RS Professionally Approved Products bring to you professional quality parts across all product categories. Our product range has been tested by engineers and provides a comparable quality to the leading brands without paying a premium price.

## Foot Switches

### Product Description

Foot switch used to command machineries and equipment in industrial environment. Suited for applications that requires sturdy and reliable products.

### General Specifications

Casing Material	Termoplastic + Aluminium
Class II - Double insulation	M20 cable gland
Operating head	Plastic lever
Microswitch	2 (NO + NC) snap action
Connecting Terminals	Screws with cable clamp plate M3.5 (+, -) pozidriv 2
Connecting Cables Dimensions [mm <sup>2</sup> ]	0,75 ... 2,5

### Mechanical Specifications

Operating Temperatures [°C]	-25 / +70
Stock Temperatures [°C]	-30 / +80
Mechanical durability (Millions of operations)	30
B10d (million of operations)	30
Max. switching frequency [Cicli/h]	3600

### Electrical Specifications

Protection against electrical shocks	Class II - Double insulation
Rated Insulating Voltage $U_i$ [V]	690
Pollution Degree	3
Contact rating secondo UL508	A 600 Q 600
Rated impulsive voltage [kV]	6
Conventional thermal current in air free $I_{th}$ ( $\theta$ min 40 ° C) [A] ( $\theta$ )	10
Short circuit protection (EU min 500Vac - fuses type gG (gl)) [A]	10
Rated Operational Current $I_e$ - AC-15 (50-60 Hz) [Vac - A]	24V - 6A / 120V - 6A / 400V - 4A
Rated Operational Current DC-13 [Vdc - A]	24V - 6A / 125V - 0.55A / 250V - 0.4A
Resistance Between Contacts [m $\Omega$ ]	25

### Protection Category

IP Degree of Protection	65
-------------------------	----

### Additional Information

EAN	8000126233360
Custom Tariff Number	85371098

### Approvals

Approvals	CE – UKCA
Standards Met	IEC 60947-1 and IEC 60947-5-1

AC-15 (according to IEC 60947-5-1)	24 V	A	4 for M8 connector	10
	240 V	A	–	6
	400 V	A	–	4
DC-13 (according to IEC 60947-5-1)	24 V	A	4 for M8 connector	6
	125 V	A	–	0.55
	250 V	A	–	0.4