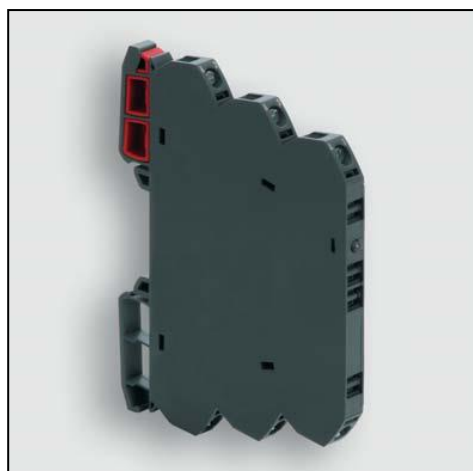


Datasheet

LCIS Relay Module

RS Stock number 888-6883



| | | |
|-----------------------|----------|------------------------|
| Identification | Type | LCIS-RGA24DC-PI-1U-HTV |
| | Part-No. | 8886883 |

| Input | |
|--------------------------------|----------------------|
| Input voltage range | 19.2 V – 30.0 V |
| Nominal voltage | DC 24 V |
| Rated frequency | 50–60 Hz |
| Rated current | 11.0 mA |
| Interrupting voltage | < 2.4 V |
| Protection device | Bridge rectifier |
| Max. length of connecting lead | DC 1000 m / AC 500 m |
| Status Indication | LED green |

| Load Side | |
|--------------------------|--|
| Contact type | 1 change over contact |
| Min. switching voltage | AC/DC 1 V |
| Max. switching voltage | AC/DC 250 V |
| Min. switching current | AC/DC 1 mA |
| Max. switching current | AC/DC 6 A |
| Switching capacity AC 15 | 3 A |
| Switching capacity DC 13 | at 24 V: 1 A, at 125 V: 200 mA, at 250 V: 100 mA |
| Max. switching capacity | 1500 VA |
| Contact material | AgSnO2+ 5 µm HV |

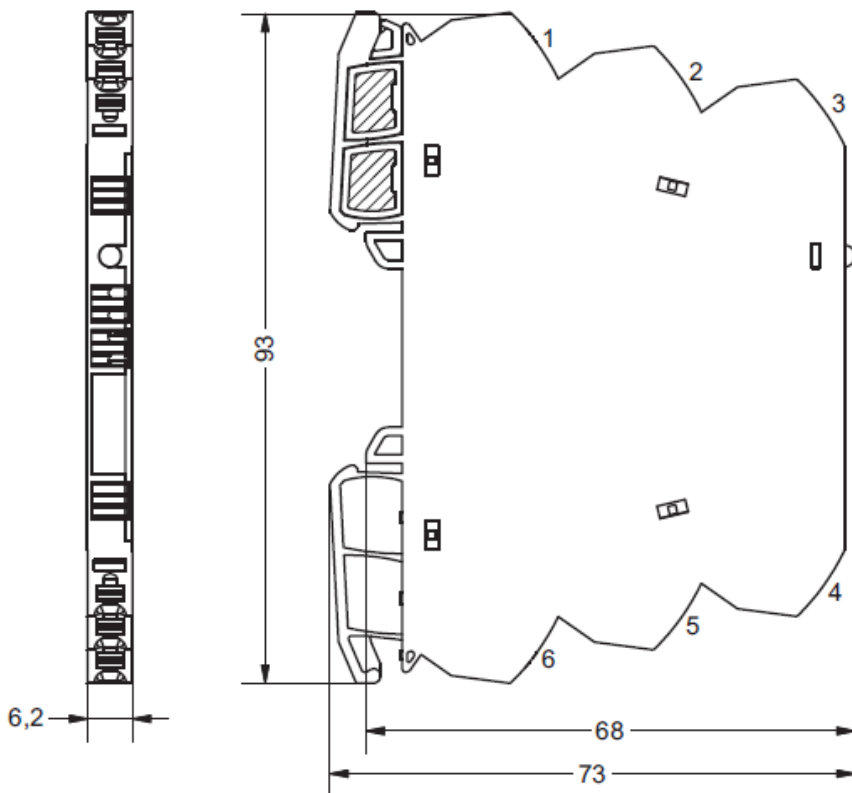


| | |
|---|----------------------------------|
| Mechanical service life | > 5 × 10 ⁷ operations |
| Inrush current | 16 A, 4 ms |
| Switch-on delay | 5 ms |
| Switch-off delay | 10 ms |
| Clearance/creep. dist. (control/load side) | >5.5 mm |

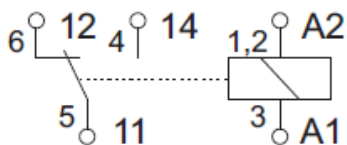
General

| | |
|--|--|
| Housing material | PA 6.6 (UL 94 V-0) |
| Protection class | IP 20 |
| Field installation | rail TS 35 (EN 60175) |
| Insulation voltage input/output | 4.0 kV _{eff} |
| Safe isolation | yes |
| Rated insulation voltage (EN 50178) | 300 V |
| Operation temperature range | -25 °C – 60 °C |
| Storage temperature range | -40 °C – 80 °C |
| Dimensions (w × h × d) | 6.2 × 93.0 × 73.0 mm |
| Weight (kg/piece) | 0.025 |
| Approvals | UL, CSA, GL in preparation |
| Termination | Push-In: solid 0.25 – 2.5 mm ² / AWG 20 – 14 fine stranded with ferrule 0.25 – 1.5 mm ² / AWG 20 – 16 Stripping length: 8 mm Screw driver: 3.5 x 0.5 mm |
| Installation position | Optional |

Dimensions



PIN assignment



Accessories

| Accessories | Color | Article number | Type | PU |
|---------------------------|-----------------|----------------|-------------------------------|----|
| Tag holder (quantity 200) | white (5x5 mm) | 8886956 | LCIS-ZB-BZS-white- 1 00 | |
| Tag holder (quantity 120) | white (12x6 mm) | 8886950 | LCOS-ZB-BZS-whi- 1 te-12/6 | |

Comments

Hard gold-plated contacts: So that the gold layer is not damaged, the specified values are not permitted to be exceeded. At higher switching capacity, the gold layer vaporizes. The deposition in the housing can lead to sparkovers between the coil and contact.