



ENGLISH

Datasheet

RS PRO 16A Crimp Contacts for RS PRO Heavy Duty Range



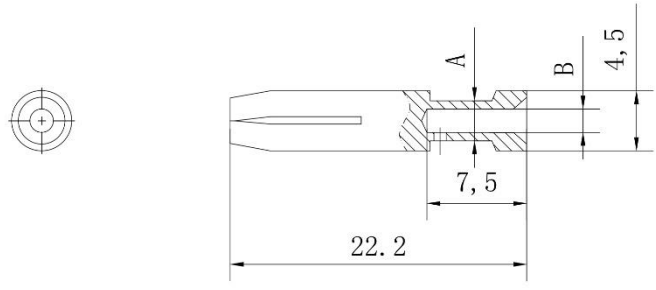
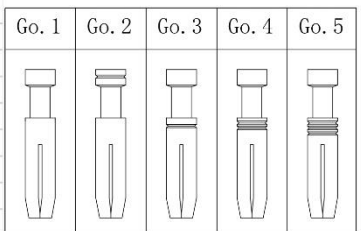
The RS PRO Heavy-Duty Connector series is a full range of heavy-duty inserts, housings, crimps and accessories. Crimps are available in 5A, 10A, 16A, 40A, 70A, 100A and 200A options which cover all but the most specialised of situations. All the crimp options are available with Silver plating however the lower current crimps are also offered with Gold plating for better conductivity at lower voltages and currents. The RS PRO Heavy-Duty connectors have been created for applications that are subjected to harsh environments or where high vibration can cause standard connectors to fail. This makes them ideal for food & beverage manufacturing, packaging machines, conveyor belt systems, railway, oil & gas processing and other industrial automation. The entire range of connectors are RoHS compliant and as with all RS PRO products, offer exceptional value for money.

Features & Benefits:

- **Gold or Silver Plated**
- **Male and Female Crimps sold Separately**
- **Fits RS PRO Heavy Duty Inserts**
 - **RS-HA Compact Inserts**
 - **RS-HE Standard Inserts**
 - **RS-HEE High Density Inserts**
 - **RS-HK Combination Inserts**
 - **RS-HM Modular Inserts**

Dimensional drawing and sizes

RS Stock Code Silver-Plated	RS Stock Code Gold-Plated	Gender	Current	Wire Diameter		A	B	Go.
				mm ²	AWG			
208-4652	208-4467	Female	16A	0.14-0.37	26-22	1.8	0.90	Go.1
208-4653	208-4468	Female	16A	0.5	20	2.6	1.10	Go.1
208-4654	208-4469	Female	16A	0.75	18	2.6	1.30	Go.2
208-4655	208-4470	Female	16A	1.0	18	2.6	1.45	Go.3
208-4657	208-4471	Female	16A	1.5	16	3.0	1.75	Go.4
208-4658	208-4472	Female	16A	2.5	14	3.5	2.25	Go.5
208-4659	N/A	Female	16A	3.0	12	3.7	2.55	Go.1
208-4660	208-4473	Female	16A	4.0	12	3.9	2.85	Go.1



RS Stock Code Silver-Plated	RS Stock Code Gold-Plated	Gender	Current	Wire Diameter		A	B	Go.
				mm ²	AWG			
208-4661	208-4474	Male	16A	0.14-0.37	26-22	1.8	0.90	Go.1
208-4662	208-4475	Male	16A	0.5	20	2.6	1.10	Go.1
208-4663	208-4477	Male	16A	0.75	18	2.6	1.30	Go.2
208-4664	208-4478	Male	16A	1.0	18	2.6	1.45	Go.3
208-4665	208-4649	Male	16A	1.5	16	3.0	1.75	Go.4
208-4666	208-4650	Male	16A	2.5	14	3.5	2.25	Go.5
208-4667	N/A	Male	16A	3.0	12	3.7	2.55	Go.1
208-4668	208-4651	Male	16A	4.0	12	3.9	2.85	Go.1

