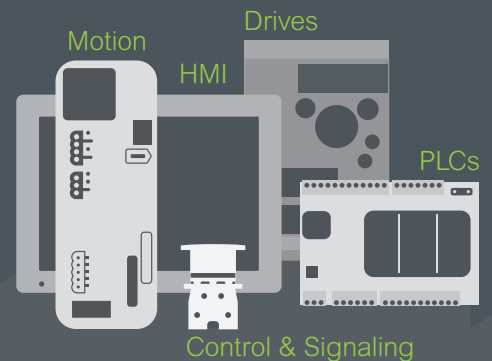




Introducing the **Easy Series**

Essential automation & control products

When just enough is just right!



Easy Harmony XA2

Plastic pushbuttons, switches and pilot lights

Control and signaling units Ø 22



Harmony

Discover [Harmony](#)

Advanced operator interface and industrial relays

Harmony operator interface and industrial relays enhance operational efficiency and equipment availability across industrial and building applications. Harmony includes intelligent connected products and edge terminals that visualize, gather and process data, enabling informed operator decisions

Explore our offer

- [Harmony](#) Push Buttons and Switches
- [Harmony](#) HMI Operator Terminals, IPC and EdgeBox
- [Harmony](#) Signaling Devices
- [Harmony](#) Electrical Relays
- [Harmony](#) Safety

Life Is On

Schneider
Electric

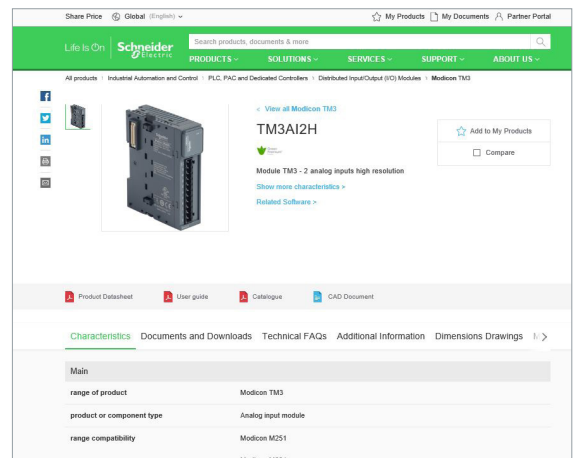
Quick access to product information

Get technical information about your product

References

Modicon TM3
I/O expansion modules for Modicon controllers
Analog I/O modules

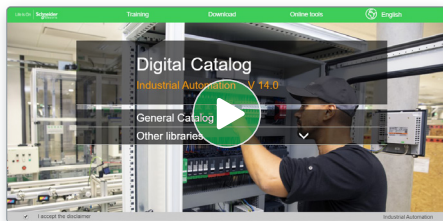
Number and type of channels	Input range	Output range	Resolution	Input format (mA)	Reference	Weight (kg)
2 voltage inputs	-15...+10 VDC 0...10 VDC 0...20 mA, 4...20 mA	16.00V or 10.00V 4 sign	16.00V or 10.00V 15	Source Sink	TM3AI2H TM3AI2G	0.110 0.200
4 voltage inputs	-15...+10 VDC 0...10 VDC 0...20 mA, 4...20 mA	16.00V or 10.00V 4 sign	16.00V or 10.00V 15	Source Sink	TM3AI4 TM3AI4G	0.100 0.200
4 voltage or temperature inputs	-15...+10 VDC 0...10 VDC 0...20 mA, 4...20 mA	16.00V or 10.00V 4 sign	16.00V or 10.00V 15	Source Sink	TM3AI4T TM3AI4TG	0.110 0.200
4 differential temperature inputs	-15...+10 VDC 0...10 VDC 0...20 mA, 4...20 mA	16.00V or 10.00V 4 sign	16.00V or 10.00V 15	Source Sink	TM3AI4D TM3AI4DG	0.110 0.200
8 self-diagnosing	-15...+10 VDC	16.00V or 10.00V 4 sign	16.00V or 10.00V 15	Source Sink	TM3AI8 TM3AI8G	0.100 0.200



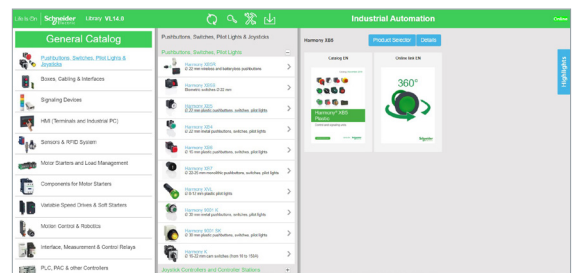
Each commercial reference presented in a catalog contains a hyperlink. Click on it to obtain the technical information of the product:

- Characteristics, Dimensions and drawings, Mounting and clearance, Connections and schemas, Performance curves
- Product image, Instruction sheet, User guide, Product certifications, End of life manual

Find your catalog



- > With just 3 clicks, you can access the Industrial Automation and Control catalogs, in both English and French
- > Consult digital automation catalogs at [Digi-Cat Online](#)

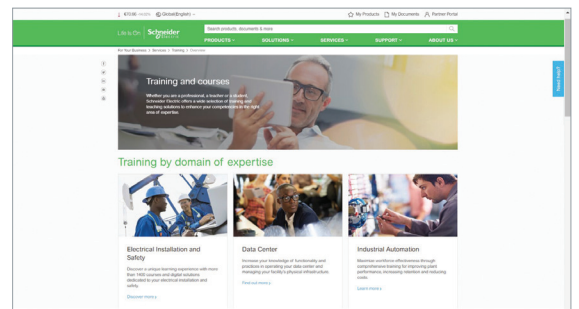


- Up-to-date catalogs
- Embedded product selectors, 360° pictures
- Optimized search by commercial references

Select your training



- > Find the right [Training](#) for your needs on our Global website
- > Locate the training center with the selector tool, using this [link](#)



General contents

Easy Harmony XA2

■ General presentation	page 2
Selection guide	page 4
■ General	
□ Presentation	page 8
□ Description	page 9
■ References	
□ Spring return pushbuttons	page 12
□ Mushroom head pushbuttons, spring return	page 12
□ Pushbuttons, push-push	page 12
□ Double-headed pushbuttons, spring return.....	page 13
□ Emergency switching off pushbuttons, push-pull and turn to release.....	page 13
□ Selector switches, with standard handle or with long handle.....	page 14
□ Key switches.....	page 14
□ Illuminated pushbuttons, flush push with integral LED	page 15
□ Bulbs and associated accessories for illuminated pushbuttons	page 16
□ Contact functions for all XA2 pushbuttons and switches	page 16
□ Pilot lights	page 17
□ Indicators	page 18
□ Empty control stations	page 19
□ Product reference index	page 20

Easy Harmony XA2:

- modular, plastic pushbuttons and switches with metallic-look ring,
- complete, plastic pilot lights with integral LED

Fit for purpose

All the products composing the Easy Harmony XA2 range have been designed to be used in numerous control and signaling applications:

- > customers can easily select the key functions for standard applications
- > their diameter, Ø 22 mm /0.866 in. makes them suitable for standard OEM and panel builder applications.
- > with plastic material, they provide a solution for industrial applications demanding a high resistance to chemical agents.

Ease and comfort of choice

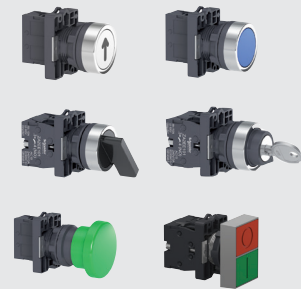
The range is available in the form of complete units. It involves:

- > modular, plastic pushbuttons and switches with metallic-look ring
The modular design allows flexible and simple setup for complete products: the right product can be chosen among various types of heads and 2 types of functions are proposed (contact and signaling)
- > complete pilot lights, provided with integral LED.

All products are fitted with screw clamp terminals allowing fast and easy connection.

Contact functions

- Pushbuttons with spring return and push-push (marked or unmarked)
- Selector switches and key switches, 2 or 3 positions
- Emergency switching off pushbuttons with push-pull and turn to release
- Double-headed pushbuttons with spring return



Contact and signaling functions

- Illuminated pushbuttons with integral LED, spring return and flush push
- Illuminated double-headed pushbuttons with integral LED, spring return



Signaling functions

- Pilot lights with integral LED
- Indicators with integral LED



Groomed ergonomics

- > Metallic-look ring on pushbuttons and switches gives a modern look
- > Ergonomic curve on the selector switches allows flexible operation



Metallic-look ring



Ergonomic curve



Pushbuttons and switches with metallic-look ring design

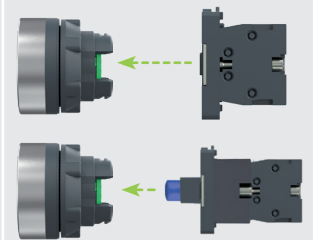
Easy installation

- > Installation of pushbuttons is simple and easy
- > Mounting by single nut to the control panel
- > Anti-rotation plate prevents the pushbutton head from rotation

- Single lock ring for mounting on control panel



- Clip-together component system for head, body, contacts, and LED light blocks



Proven robustness

- > Conforming to most demanding international standards and approvals
- > Tested and certified performance
- > Excellent resistance to mechanical shock and vibration
- > Supports extended temperature range from - 40° C to + 70° C



Helps customer to
improve the reliability

Service and availability

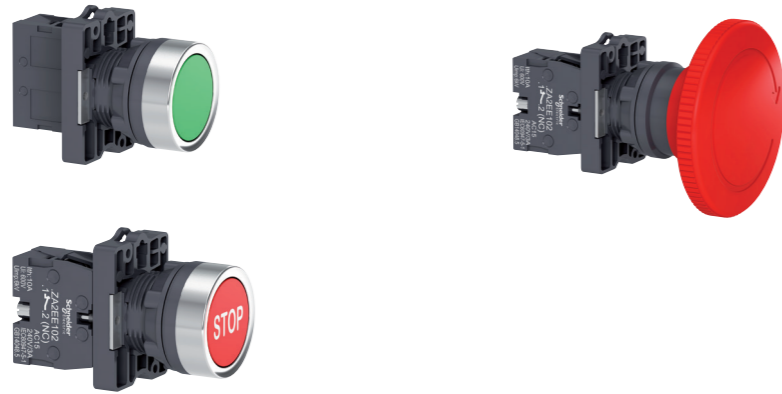
- > Supported by the service of Schneider Electric
- > Wide availability throughout an extensive distribution network

 Up to IP 65 degree of protection

Control and signaling units Ø 22

Easy Harmony XA2, plastic
Pushbuttons, switches and pilot lights

Type of products	Contact functions	
	Pushbuttons	Emergency switching off pushbuttons



Description of range	<ul style="list-style-type: none"> ■ Pushbuttons, spring return: flush push, mushroom head, and push-push ■ Emergency switching off pushbuttons: turn to release and push-pull 				
Features	<table border="1"> <tr> <td>Products</td> <td>Complete units</td> </tr> <tr> <td>Shape of head</td> <td>Circular</td> </tr> </table>	Products	Complete units	Shape of head	Circular
Products	Complete units				
Shape of head	Circular				
Drilling or cut-out for mounting	Ø 22 mm/0.866 in.				
Degree of protection	IP 65 conforming to standard IEC 60529				
International standards	IEC 60947-5-1, EN 60947-5-1, GB/T 14048.1-93, GB/14048.5-93				
Product certification	CCC, EAC, CE				
Cabling	Screw clamp terminal connections				
Mounting	Panel thickness				
	Ø 1 to 6 mm/ 0.04 to 0.24 in.				
Type references	<table border="1"> <tr> <td>XA2EA●●/EA●●●●/EC●●/EH0●●</td> <td>XA2ET●●/ES●●●</td> </tr> </table>	XA2EA●●/EA●●●●/EC●●/EH0●●	XA2ET●●/ES●●●		
XA2EA●●/EA●●●●/EC●●/EH0●●	XA2ET●●/ES●●●				
Pages	<table border="1"> <tr> <td>12</td> <td>13</td> </tr> </table>	12	13		
12	13				

Contact functions	
Selector and key switches	Double-headed pushbuttons

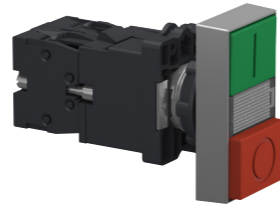


Description of range	<ul style="list-style-type: none"> ■ Selector switches, 2 or 3-position: standard or long handle ■ Key switches 	<ul style="list-style-type: none"> ■ Double-headed pushbuttons, spring return 				
Features	<table border="1"> <tr> <td>Complete units</td> <td></td> </tr> <tr> <td>Circular</td> <td>Rectangular</td> </tr> </table>	Complete units		Circular	Rectangular	
Complete units						
Circular	Rectangular					
Drilling or cut-out for mounting	Ø 22 mm/0.866 in.					
Degree of protection	IP 54 conforming to standard IEC 60529 Selector switches: IP 65 Key switches: IP 54	IP 40 conforming to standard IEC 60529				
International standards	IEC 60947-5-1, EN 60947-5-1, GB/T 14048.1-93, GB/14048.5-93					
Product certification	CCC, EAC, CE	CCC, CE, and EAC				
Cabling	Screw clamp terminal connections					
Mounting	Panel thickness					
	Ø 1 to 6 mm/ 0.04 to 0.24 in.					
Type references	XA2ED●●/EJ●●/EG●●	XA2EA7A3415				
Pages	14	13				

Control and signaling units Ø 22

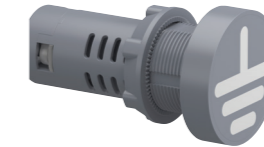
Easy Harmony XA2, plastic
Pushbuttons, switches and pilot lights

Type of products	Contact and signaling functions	
	Illuminated pushbuttons	Illuminated double-headed pushbuttons



Description of range	■ Illuminated pushbuttons with integral LED, spring return: flush push	■ Illuminated double-headed pushbuttons with integral LED, spring return
Features	Products	
	Complete units	
Shape of head	Circular	Rectangular
	Drilling or cut-out for mounting	Ø 22 mm/0.866 in.
Degree of protection	IP 65 conforming to standard IEC 60529	IP 40 conforming to standard IEC 60529
	International standards	IEC 60947-5-1, EN 60947-5-1, GB/T 14048.1-93, GB/14048.5-93
Product certification	CCC, EAC, CE	CCC, CE, and EAC
Cabling	Screw clamp terminal connections	
Mounting	Panel thickness	
	Ø 1 to 6 mm/0.04 to 0.24 in.	
Type references	XA2EW3●●●	XA2EW7L3741●5
Pages	15	13

Signaling functions	
Pilot lights	Indicators



Pilot lights with integral LED		Indicators with integral LED	
Complete units			
Circular			
Drilling or cut-out for mounting			
Ø 22 mm/0.866 in.			
Degree of protection		IP 65 conforming to standard IEC 60529	IP 54 conforming to standard IEC 60529
International standards			
IEC 60947-5-1, EN 60947-5-1, GB/T 14048.1-2012, GB/14048.5-2017			
Product certification		CCC, CE	CCC, CE
Cabling			
Screw clamp terminal connections			
Mounting	Panel thickness		
	Ø 1 to 6 mm/0.04 to 0.24 in.		
Type references	XA2EV●●LC/EV●E●LC/EV●D●LC/EV●●34LC		XA2EV●34●PC
Pages	17	18	

Control and signaling units Ø 22

Easy Harmony XA2, plastic

Pushbuttons, switches and pilot lights

Presentation

The Easy Harmony XA2 range of Ø 22/0.866 in. plastic control and signaling units combines simplicity of installation, flexibility and robustness. It meets the requirements of the majority of industrial applications. The metallic-look ring design on the pushbuttons and switches gives them a modern look. These products are available in the form of complete units.

■ This range includes:

- Contact functions: pushbuttons, selector/key switches, Emergency switching off pushbuttons, and double-headed pushbuttons designed for parameter settings, adjustments, and start/stop control of machines and installations
- Contact and signaling functions: illuminated pushbuttons and double-headed illuminated pushbuttons designed for control and signaling functions
- Signaling functions: pilot lights and indicators designed for visual signaling

■ The pushbutton, switch control (illuminated and non-illuminated), and pilot light offer is both broad and comprehensive:

- Pushbuttons, spring return with flush push, marked or unmarked, or mushroom head
- Emergency stop pushbuttons Ø 40/1.575 in., Ø 30/1.181 in., and Ø 60/2.362 in. with 2 types of head: push-pull and turn to release
- Pilot lights, indicators, and illuminated pushbuttons with integral LED
- Selector switches with different types of operator: standard handle, long handle, or key
- Choice of heads: circular and double-head
- Connection type: screw clamp connector
- Various accessories

Installation

■ Easy Harmony XA2 products are both simple and quick to install:

- Mounting by a single nut to the control panel,
- Body/fixing collar simply clip on the head.

Environment

The performance features of the Easy Harmony XA2 range meets the following specifications:

■ Degrees of protection conforming to standard IEC 60529:

- IP 65 for pushbuttons, Emergency switching off pushbuttons, illuminated pushbuttons, and pilot lights
- IP 54 for key selector switch and indicators
- IP40 for double-headed pushbuttons

■ International standards:

- IEC 60947-5-1, EN 60947-5-1, GB/T 14048.1-93, GB/14048.5-93

■ Product certification:

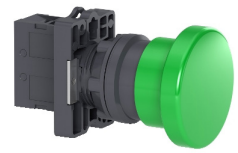
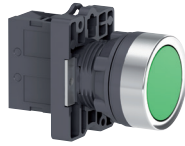
- CCC, EAC, CE

For more technical information, please refer to the Schneider Electric website, Easy Harmony XA2 offer.

Complete units

Pushbuttons, spring return	Type of push
	Degree of protection
	Color
	Reference
	Pages

Contact functions



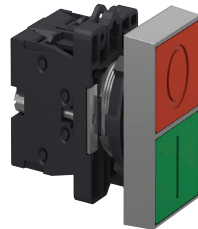
Flush push, unmarked	Flush push, marked	Mushroom head
IP65	IP65	IP65
White, Black, Green, Yellow, Blue, and Red	Green, Black, White, Red and Blue	Black, Green and Red
XA2EA●1/EA42	XA2EA33●1/EA43●2/ XA2EA6511	XA2EC●1/EC42
12	12	12

Pushbuttons, push-push	Type of push
	Degree of protection
	Color
	Reference
	Pages



Flush push, unmarked
IP65
Black, Green, Yellow and Red
XA2EH0●1/EH042
12

Double-headed pushbuttons, spring return	Type of push
	Degree of protection
	Color
	Reference
	Pages



Flush push
IP40
Green and Red
XA2EA7A3415
13

Emergency switching off pushbuttons	Type of push
	Degree of protection
	Color
	Reference
	Pages



Turn to release and push-pull (Ø 30 mm/1.181 in., Ø 40 mm/1.575 in., Ø 60 mm/1.362 in.)
IP65
Red
XA2ET42/ES●42
13

Complete units (continued)

Contact functions

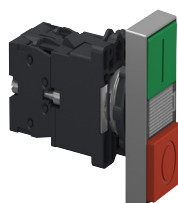


Selector switches and key switches	Type of push	Standard handle, 2 or 3 positions	Long handle, 2 or 3 positions	Key, 2 or 3 positions
	Degree of protection	IP65	IP65	IP54
	Reference	XA2ED●●	XA2EJ●●	XA2EG21/EG●3
	Page	14		

Contact and signaling functions



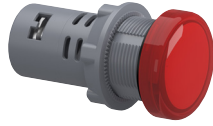
Illuminated pushbuttons, spring return	Type of push	Flush push
	Degree of protection	IP65
	LED	Integral LEDs 24, 220...230, or 380...400 V
	Color	White, Green, Red, Amber and Blue
	Reference	XA2EW3●B1/3●M1/ 3●Q1
	Pages	15



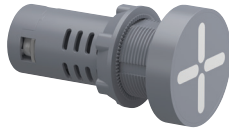
Double-headed pushbuttons, spring return with pilot light block	Type of push	Flush push
	Degree of protection	IP40
	LED	Integral LEDs 24 or 220...230 V
	Color	Red and Green
	Reference	XA2EW7L3741B5, XA2EW7L3741M5
	Pages	13

Complete units (continued)

Signaling functions



Pilot lights	Degree of protection	IP65
	LED	Integral LEDs 12 V, 24 V, 30 V, 48 V, 60...63.5 V, 110 V, 220...230 V, and 380...400 V
	Color	White, Green, Red, Amber, Blue, Yellow and Bi-color (Green/Red)
	Reference	XA2EV●●LC/EV●E●LC/EV●D●LC/EV●●34LC
	Pages	17



Indicators	Degree of protection	IP54
	LED	Integral LEDs 110 V, 220...230 V, and 380...400 V
	Color	Red and Green
	Reference	XA2EV●34●PC
	Pages	18

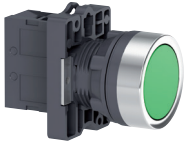
Control and signaling units Ø 22

Easy Harmony XA2, plastic

Spring return pushbuttons, marked and unmarked

Mushroom head pushbuttons, spring return

PF132002



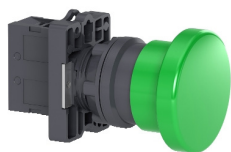
XA2EA31

PF132010



XA2EA4342

PF132012



XA2EC31

PF132017



XA2EH021

Spring return pushbuttons with flush push

Shape of head	Type of contacts		Color of push	Marking	Reference	Weight kg/lb
	NO	NC				
Unmarked						
	1	–	White	–	XA2EA11	0.032/0.071
	1	–	Black	–	XA2EA21	0.032/0.071
	1	1	Black	–	XA2EA25	0.032/0.071
	1	–	Green	–	XA2EA31	0.032/0.071
	1	1	Green	–	XA2EA35	0.032/0.071
	1	–	Yellow	–	XA2EA51	0.032/0.071
	1	–	Blue	–	XA2EA61	0.032/0.071
	1	–	Red	–	XA2EA41	0.032/0.071
	–	1	Red	–	XA2EA42	0.032/0.071
	1	1	Red	–	XA2EA45	0.032/0.071
Marked						
	1	–	Green	"I"	XA2EA3311	0.032/0.071
	1	–	Black	"↑"	XA2EA3351	0.032/0.071
	1	–	White	"↑"	XA2EA3341	0.032/0.071
	–	1	Red	"O"	XA2EA4322	0.032/0.071
	–	1	Red	"STOP"	XA2EA4342	0.032/0.071
	1	–	Blue	"↕"	XA2EA6511	0.032/0.071

Mushroom head pushbuttons, spring return

Shape of head	Type of contacts		Color of push	Diameter Ø (mm)/in.	Reference	Weight kg/lb
	NO	NC				
	1	–	Black	40/1.575	XA2EC21	0.052/0.115
	1	–	Green	40/1.575	XA2EC31	0.052/0.115
	–	1	Red	40/1.575	XA2EC42	0.052/0.115

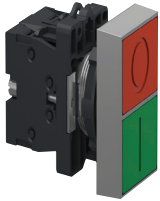
Pushbuttons, push-push with flush push

Shape of head	Type of contacts		Color of push	Reference	Weight kg/lb
	NO	NC			
Complete unit					
	1	–	Black	XA2EH021	0.04/0.088
	1	–	Green	XA2EH031	0.04/0.088
	–	1	Red	XA2EH042	0.04/0.088
	1	–	Yellow	XA2EH051	0.04/0.088

Control and signaling units Ø 22

Easy Harmony XA2, plastic
 Double-headed pushbuttons, spring return
 Emergency switching off pushbuttons

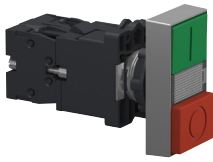
XA2E_CP20011_2



XA2EA7A3415

Double-headed pushbuttons, spring return							
Shape of head	Description	Type of contacts		Caps (1)		Reference	Weight kg/lb
				Marking	Background color		
		 NO	 NC				
Complete units							
	1 flush push, green	1	1	"I"	Green	XA2EA7A3415	0.048/0.106
	1 flush push, red			"O"	Red		

XA2E_CP20012_2

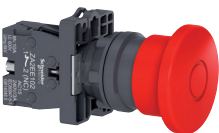


XA2EW7L3741●●

Double-headed pushbuttons with 1 white central pilot light block								
Shape of head	Description	Type of contacts		Caps (1)		Pilot light Voltage V	Reference	Weight kg/lb
				Marking	Background color			
		 NO	 NC					
Complete units								
	1 flush push, green	1	1	"I"	Green	24 ~	XA2EW7L3741B5	0.072/0.159
	1 flush push, red			"O"	Red			
	1 central pilot light block, white					220...230 ~	XA2EW7L3741M5	0.072/0.159



PFI32022



XA2ET42

Emergency switching off pushbuttons						
Shape of head	Type of push	Type of contacts	Diameter Ø (mm)/in.	Reference	Weight kg/lb	
		 NC				
	Push-pull	1	40/1.575	XA2ET42	0.088/0.194	
	Turn to release	1	30/1.181	XA2ES442	0.056/0.123	
			40/1.575	XA2ES542	0.058/0.128	
			60/2.362	XA2ES642	0.064/0.141	

Note: For information on dimensions, please refer to the Schneider Electric website, Easy Harmony XA2 offer.
 (1) These caps are factory assembled and cannot be removed (risk of damage).

Control and signaling units Ø 22

Easy Harmony XA2, plastic

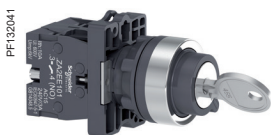
Selector switches, with standard or long handle

Key switches



XA2ED53

Selector switches, with standard handle or with long handle							
Shape of head	Type of push	Type of contacts		Number and type of positions	Reference	Weight kg/lb	
		NO	NC				
	Standard handle	1	–	2 - stay put		XA2ED21	0.04/0.088
		1	1	2 - stay put		XA2ED25	0.054/0.119
		2	–	3 - stay put		XA2ED33	0.054/0.119
		2	–	3 - spring return from 2 sides		XA2ED53	0.054/0.119
		1	–	2 - spring return		XA2ED41	0.041/0.090
	Long handle	1	–	2 - stay put		XA2EJ21	0.041/0.090
		1	1	2 - stay put		XA2EJ25	0.041/0.090
		2	–	3 - stay put		XA2EJ33	0.055/0.121
		2	–	3 - spring return from 2 sides		XA2EJ53	0.055/0.121



XA2EG03

Key switches							
Shape of head	Type of push	Type of contacts		Number and type of positions	Reference	Weight kg/lb	
		NO	NC				
	Key	1	–	2 - stay put, one side pull-out		XA2EG21	0.064/0.141
		2	–	2 - stay put, two sides pull-out		XA2EG43	0.078/0.172
		2	–	2 - spring return, one side pull-out		XA2EG63	0.078/0.172
		2	–	3 - spring return from 2 sides, middle pull-out		XA2EG73	0.078/0.172
		2	–	3 - stay put, middle pull-out		XA2EG33	0.078/0.172
		2	–	3 - stay put, 3 sides pull-out		XA2EG03	0.078/0.172

Note: For information on dimensions, please refer to the Schneider Electric website, Easy Harmony XA2 offer.

Control and signaling units Ø 22

Easy Harmony XA2, plastic

Illuminated pushbuttons with flush push


Bulbs for illuminated pushbuttons

Contact functions for all XA2 pushbuttons and switches

PF132051



XA2EW36B1

Illuminated pushbuttons with integral LED								
Shape of head	Type of push	Supply voltage V	Type of contacts		Color	Reference	Weight kg/lb	
			NO	NC				
	Flush push	24 ~	1	-	White	XA2EW31B1	0.056/0.123	
					Green	XA2EW33B1	0.056/0.123	
					Red	XA2EW34B1	0.056/0.123	
					Amber	XA2EW35B1	0.056/0.123	
					Blue	XA2EW36B1	0.056/0.123	
					Red	XA2EW34B2	0.056/0.123	
	220-230 ~	1	-	1	-	White	XA2EW31M1	0.064/0.141
						Green	XA2EW33M1	0.064/0.141
						Red	XA2EW34M1	0.064/0.141
						Amber	XA2EW35M1	0.064/0.141
						Blue	XA2EW36M1	0.064/0.141
						Red	XA2EW34M2	0.056/0.123
380-400 ~	1	-	1	-	White	XA2EW31Q1	0.064/0.141	
					Red	XA2EW34Q2	0.056/0.123	

Note: For information on dimensions, please refer to the Schneider Electric website, Easy Harmony XA2 offer.

Control and signaling units Ø 22

Easy Harmony XA2, plastic

Illuminated pushbuttons with flush push

Bulbs for illuminated pushbuttons

Contact functions for all XA2 pushbuttons and switches



Bulbs with BA 9s base fitting and associated accessories

Description	Characteristics	Color	Sold in lots of	Unit reference	Weight kg/lb
LEDs	24 ~	White	10	DL1LED241	0.002/0.004
		Green	10	DL1LED243	0.002/0.004
		Red	10	DL1LED244	0.002/0.004
		Yellow	10	DL1LED245	0.002/0.004
		Blue	10	DL1LED246	0.002/0.004

Description	Application	Sold in lots of	Unit reference	Weight kg/lb
Bezel tool	Tightening head fixing nut	1	ZB5AZ905	0.016/0.035
Anti-rotation plate	Prevents head from rotation	10	ZB5AZ902	0.008/0.018

Contact functions (for all XA2 pushbuttons and switches)

Screw clamp terminal connections

Description	To be used with	Type of contacts		Sold in lots of	Unit reference	Weight kg/lb
		NO	NC			
Contact blocks	All XA2 pushbuttons and switches	1	–	1	ZA2EE101	0.014/0.031
		–	1	1	ZA2EE102	0.014/0.031

Control and signaling units Ø 22

Easy Harmony XA2, plastic

Pilot lights with integral LED

XA2E_CP20053_2



XA2EVB4LC

XA2E_CP20056_2



XA2EVC6LC

XA2E_CP20054_2



XA2EVE4LC

Pilot lights with integral LED, screw clamp terminal connection

Shape of head	Supply voltage V	Color of lens	Sold in lots of	Reference	Weight kg/lb
●	12 ~	White	10	XA2EVJ1LC	0.019/0.041
		Green	10	XA2EVJ3LC	0.019/0.041
		Red	10	XA2EVJ4LC	0.019/0.041
		Amber	10	XA2EVJ5LC	0.019/0.041
		Blue	10	XA2EVJ6LC	0.019/0.041
		Yellow	10	XA2EVJ8LC	0.019/0.041
	24 ~	White	10	XA2EVB1LC	0.019/0.041
		Green	10	XA2EVB3LC	0.019/0.041
		Red	10	XA2EVB4LC	0.019/0.041
		Amber	10	XA2EVB5LC	0.019/0.041
		Blue	10	XA2EVB6LC	0.019/0.041
		Yellow	10	XA2EVB8LC	0.019/0.041
	Green/Red	5	XA2EVB34LC	0.022/0.049	
		30 ~	White	10	XA2EVC1LC
	Green		10	XA2EVC3LC	0.019/0.041
	Red		10	XA2EVC4LC	0.019/0.041
	Amber		10	XA2EVC5LC	0.019/0.041
	Blue		10	XA2EVC6LC	0.019/0.041
Yellow	10		XA2EVC8LC	0.019/0.041	
48 ~	White	10	XA2EVE1LC	0.019/0.041	
	Green	10	XA2EVE3LC	0.019/0.041	
	Red	10	XA2EVE4LC	0.019/0.041	
	Amber	10	XA2EVE5LC	0.019/0.041	
	Blue	10	XA2EVE6LC	0.019/0.041	
	Yellow	10	XA2EVE8LC	0.019/0.041	
60...63.5 ~	White	10	XA2EVEE1LC	0.019/0.041	
	Green	10	XA2EVEE3LC	0.019/0.041	
	Red	10	XA2EVEE4LC	0.019/0.041	
	Amber	10	XA2EVEE5LC	0.019/0.041	
	Blue	10	XA2EVEE6LC	0.019/0.041	
	Yellow	10	XA2EVEE8LC	0.019/0.041	


Note: For information on dimensions, please refer to the Schneider Electric website, Easy Harmony XA2 offer.

Control and signaling units Ø 22

Easy Harmony XA2, plastic

Pilot lights with integral LED, Indicators

Pilot lights with integral LED, screw clamp terminal connection

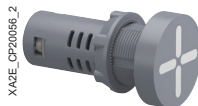
Shape of head	Supply voltage V	Color of lens	Sold in lots of	Reference	Weight kg/lb
	110 ~	White	10	XA2EVF1LC	0.019/0.041
		Green	10	XA2EVF3LC	0.019/0.041
		Red	10	XA2EVF4LC	0.019/0.041
		Amber	10	XA2EVF5LC	0.019/0.041
		Blue	10	XA2EVF6LC	0.019/0.041
		Yellow	10	XA2EVF8LC	0.019/0.041
	220 ---	White	10	XA2EVMD1LC	0.019/0.041
		Green	10	XA2EVMD3LC	0.019/0.041
		Red	10	XA2EVMD4LC	0.019/0.041
		Amber	10	XA2EVMD5LC	0.019/0.041
		Blue	10	XA2EVMD6LC	0.019/0.041
		Yellow	10	XA2EVMD8LC	0.019/0.041
220-230 ~	White	10	XA2EVM1LC	0.019/0.041	
	Green	10	XA2EVM3LC	0.019/0.041	
	Red	10	XA2EVM4LC	0.019/0.041	
	Amber	10	XA2EVM5LC	0.019/0.041	
	Blue	10	XA2EVM6LC	0.019/0.041	
	Yellow	10	XA2EVM8LC	0.019/0.041	
	Green/Red	5	XA2EVM34LC	0.022/0.049	
380...400 ~	White	10	XA2EVQ1LC	0.019/0.041	
	Green	10	XA2EVQ3LC	0.019/0.041	
	Red	10	XA2EVQ4LC	0.019/0.041	
	Amber	10	XA2EVQ5LC	0.019/0.041	
	Blue	10	XA2EVQ6LC	0.019/0.041	
	Yellow	10	XA2EVQ8LC	0.019/0.041	



XA2EVM5LC



XA2EVQ8LC



XA2EVF34SPC






XA2EVF34BPC



XA2EVF34GPC

Indicators, screw clamp terminal connection

Shape of head	Indicator type	Supply voltage V	Color of lens	Sold in lots of	Reference	Weight kg/lb
	Isolation switch	110 ~	Green/Red	5	XA2EVF34SPC	0.027/0.058
		220...230 ~	Green/Red	5	XA2EVM34SPC	0.027/0.058
		380...400 ~	Green/Red	5	XA2EVQ34SPC	0.027/0.058
	Circuit breaker	110 ~	Green/Red	5	XA2EVF34BPC	0.027/0.058
		220...230 ~	Green/Red	5	XA2EVM34BPC	0.027/0.058
		380...400 ~	Green/Red	5	XA2EVQ34BPC	0.027/0.058
	Ground	110 ~	Green/Red	5	XA2EVF34GPC	0.027/0.058
		220...230 ~	Green/Red	5	XA2EVM34GPC	0.027/0.058
		380...400 ~	Green/Red	5	XA2EVQ34GPC	0.027/0.058

Note: For information on dimensions, please refer to the Schneider Electric website, Easy Harmony XA2 offer.

Control and signaling units Ø 22

Easy Harmony XA2, plastic

Empty control stations for XA2 pushbuttons, switches,
and pilot lights

XALB01C



XALB03C

Empty control stations

Description	Characteristics	Dimension w x h x d mm/in.	Number of cut-outs	Reference	Weight kg/lb
Light gray "RAL 7035" cover Dark gray "RAL 7016" base	IP65	68 x 86 x 51/ 2.68 x 3.39 x 2	1	XALB01C	0.100/0.220
		68 x 104 x 51/ 2.68 x 4.1 x 2	2	XALB02C	0.150/0.330
		68 x 86 x 51/ 2.68 x 3.39 x 2	3	XALB03C	0.200/0.440
Yellow "RAL 1021" cover Dark gray "RAL 7016" base	IP65	68 x 86 x 51/ 2.68 x 3.39 x 2	1	XALB01YC	0.100/0.220

D		
DL1LED241	16	
DL1LED243	16	
DL1LED244	16	
DL1LED245	16	
DL1LED246	16	
X		
XA2EA11	12	
XA2EA21	12	
XA2EA25	12	
XA2EA31	12	
XA2EA3311	12	
XA2EA3341	12	
XA2EA3351	12	
XA2EA35	12	
XA2EA41	12	
XA2EA42	12	
XA2EA4322	12	
XA2EA4342	12	
XA2EA45	12	
XA2EA51	12	
XA2EA61	12	
XA2EA6511	12	
XA2EA7A3415	"9	
XA2EC21	12	
XA2EC31	12	
XA2EC42	12	
XA2ED21	14	
XA2ED25	14	
XA2ED33	14	
XA2ED41	14	
XA2ED53	14	
XA2EDpp	10	
XA2EG03	14	
XA2EG21	14	
XA2EG33	14	
XA2EG43	14	
XA2EG63	14	
XA2EG73	14	
XA2EH021	12	
XA2EH031	12	
XA2EH042	12	
XA2EH051	12	
XA2EJ21	14	
XA2EJ25	14	
XA2EJ33	14	
XA2EJ53	14	
XA2EJpp	10	
XA2ES442	13	
XA2ES542	13	
XA2ES642	13	
XA2ET42	13	
XA2EVB1LC	17	
XA2EVB34LC	17	
XA2EVB3LC	17	
XA2EVB4LC	17	
XA2EVB5LC	17	
XA2EVB6LC	17	
XA2EVB8LC	17	
XA2EVC1LC	17	
XA2EVC3LC	17	
XA2EVC4LC	17	
XA2EVC5LC	17	
XA2EVC6LC	17	
XA2EVC8LC	17	
XA2EVE1LC	17	
XA2EVE3LC	17	
XA2EVE4LC	17	
XA2EVE5LC	17	
XA2EVE6LC	17	
XA2EVE8LC	17	
XA2EVEE1LC	17	
XA2EVEE3LC	17	
XA2EVEE4LC	17	
XA2EVEE5LC	17	
XA2EVEE6LC	17	
XA2EVEE8LC	17	
XA2EVF1LC	18	
XA2EVF34BPC	18	
XA2EVF34GPC	18	
XA2EVF34SPC	18	
XA2EVF3LC	18	
XA2EVF4LC	18	
XA2EVF5LC	18	
XA2EVF6LC	18	
XA2EVF8LC	18	
XA2EVJ1LC	17	
XA2EVJ3LC	17	
XA2EVJ4LC	17	
XA2EVJ5LC	17	
XA2EVJ6LC	17	
XA2EVJ8LC	17	
XA2EVM1LC	18	
XA2EVM34BPC	18	
XA2EVM34GPC	18	
XA2EVM34LC	18	
XA2EVM34SPC	18	
XA2EVM3LC	18	
XA2EVM4LC	18	
XA2EVM5LC	18	
XA2EVM6LC	18	
XA2EVM8LC	18	
XA2EVMD1LC	18	
XA2EVMD3LC	18	
XA2EVMD4LC	18	
XA2EVMD5LC	18	
XA2EVMD6LC	18	
XA2EVMD8LC	18	
XA2EVQ1LC	18	
XA2EVQ34BPC	18	
XA2EVQ34GPC	18	
XA2EVQ34SPC	18	
XA2EVQ3LC	18	
XA2EVQ4LC	18	
XA2EVQ5LC	18	
XA2EVQ6LC	18	
XA2EVQ8LC	18	
XA2EW31B1	15	
XA2EW31M1	15	
XA2EW31Q1	15	
XA2EW33B1	15	
XA2EW33M1	15	
XA2EW34B1	15	
XA2EW34B2	15	
XA2EW34M1	15	
XA2EW34M2	15	
XA2EW34Q2	15	
XA2EW35B1	15	
XA2EW35M1	15	
XA2EW36B1	15	
XA2EW36M1	15	
XA2EW7L3741B5	13	
XA2EW7L3741M5	13	
Z		
ZA2EE101	16	
ZA2EE102	16	
ZB5AZ902	16	
ZB5AZ905	16	

Life Is On



Learn more about our products at
www.se.com

The information provided in this documentation contains general descriptions and/or technical characteristics of the performance of the products contained herein. This documentation is not intended as a substitute for and is not to be used for determining suitability or reliability of these products for specific user applications. It is the duty of any such user or integrator to perform the appropriate and complete risk analysis, evaluation and testing of the products with respect to the relevant specific application or use thereof. Neither Schneider Electric nor any of its affiliates or subsidiaries shall be responsible or liable for misuse of the information contained herein.

Design: Schneider Electric
Photos: Schneider Electric

Schneider Electric Industries SAS

Head Office
35, rue Joseph Monier - CS 30323
F-92500 Rueil-Malmaison Cedex
France

DIA5ED2140104EN
June 2022 - V8.0