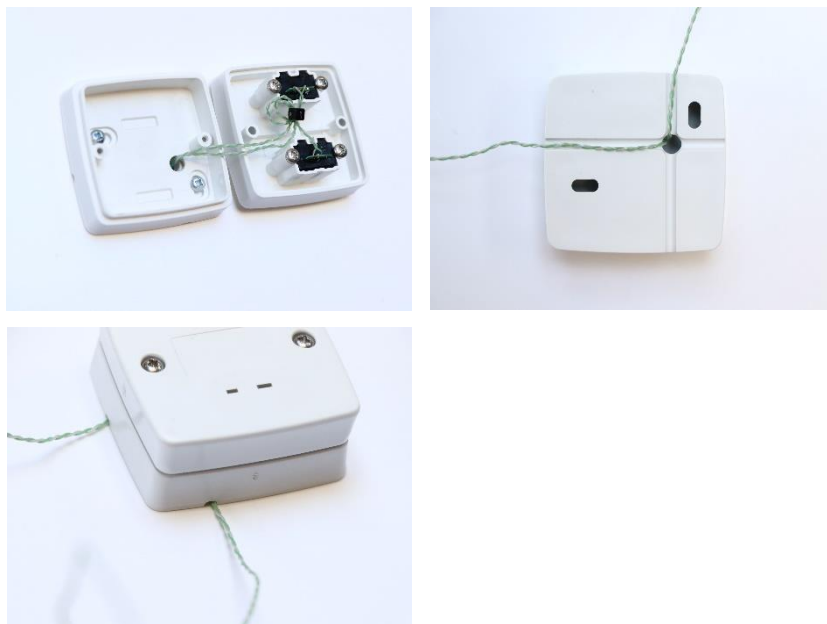


TC Wall Port with Integral Fine Wire Installation Guide

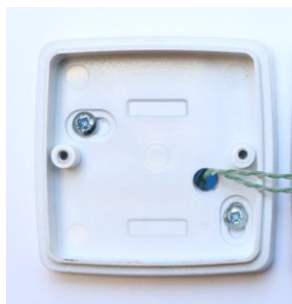
The TC Wall Port is now available in both single and dual input versions. In order to make installation even easier, these products are also now available with integral fine wire probes which can be supplied in lengths ranging from 1 – 20m.

To install, firstly position your TC Wall Port at a convenient location which is within easy reach. The integral fine wire probe for the Single input TC Wall Port can be positioned to exit either from the side or the rear of the Wall Port. This allows for the user to monitor pipework or other surfaces which are directly behind the TC Wall Port if required.

The integral fine wire probe for the Dual Input TC Wall Port can exit from the rear or any of the channels.



Attach the probe sensor to the object you wish to monitor using a TAPS adhesive pad or similar tape. Run the probe wire back to the TC Wall Port and fix the back panel to the wall using the slotted screw holes provided.



Now fix the face plate to the back plate using the screws provided.



The TC Wall Port is now ready for use.

Connect your thermocouple thermometer with a coiled connection lead to get a quick and accurate temperature reading.



Parts List		
Allied Part Number	RS Part Number	Description
TCWALL-KA01-01	219-5354	Thermocouple Wall Port with Integral Fine Wire Probe (1m)
TCWALLPORT	788-7129	Thermocouple Wall Port for use with External Probes
TCWALLPORT-D-KA01-01	219-5355	Double Thermocouple Wall Port with Integral Fine Wire Probes (1m)
KMPC1MP	788-7122	Coiled Connection Cable 1m Length
MM2008	204-8413	Thermocouple Legionella Thermometer
MM7010	204-8412	Thermocouple Logging Thermometer
MM7000-2D	204-8411	Thermocouple Barcode Scanning Logging Thermometer