

Datasheet

Nitrile Rubber Seal, 17.28mm Bore, 23.8mm Outside Diameter, -10 to +80°C

RS Stock number 689-489



Description:

These seals comprise a metal annulus to which a medium nitrile elastomeric ring of trapezoidal cross-section is bonded. They provide high and low pressure sealing for ports on fluid systems where mineral based hydraulic fluids or mineral based engine lubricating oils are present.

Available in both metric and BSP-based Imperial sizes

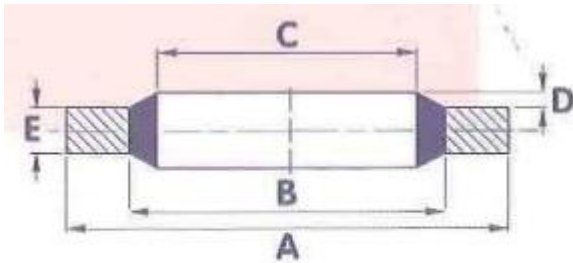
Hardness: 1 RHD 85-95

Temperature range: -30°C to +110°C

Note: The width (or thickness) quoted for the self-centralising bonded washers relates to the thickness of the fibre part of the washer.

Specifications

Inside Diameter:	17.28mm
Material:	Nitrile Rubber
Maximum Operating Temperature:	+80°C
Minimum Operating Temperature:	-10°C
Outside Diameter:	23.8mm
Thickness:	2.03mm
Type:	Bonded Seal



PLAIN

REFERENCE	SIZE (INCHES)		A	B	C	D	E	APPROX BURST PRESSURE (BAR)
	BSP	BOLT	+0.13 -0.00	+0.10 -0.10	+0.10 -0.10		+0.15 -0.15	
	-	6BA	6.35	4.09	3.05	0.20/ 0.45	1.22	2150
	-	4BA	7.26	5.26	4.12			1570
	-	2BA	8.38	6.35	5.21			1375
	-	1/4	13.21	8.00	6.86			2450
	-	1/4	13.34	9.53	6.99			1700
	-	5/16	13.34	9.53	8.31			1700
	-	5/16	14.22	10.04	8.64		1750	
689-467	1/8	3/8	15.88	11.84	10.37	0.25/ 0.51	2.03	1500
	-	0.4	18.36	12.45	11.26			1950
	-	7/16	19.05	13.08	11.69			1900
689-473	1/4	1/2	20.57	15.21	13.74			1550
	-	9/16	22.23	16.39	14.86			1575
	-	0.6	22.23	17.30	15.83			1310
	-	5/8	25.40	18.75	16.51			1550
689-489	3/8	-	23.80	18.75	17.28			1260
	-	11/16	25.40	19.69	18.16			1320
	-	3/4	26.92	21.21	19.69			1260
689-495	1/2	13/16	28.58	23.01	21.54			1150
	-	7/8	31.75	24.97	23.49			1250
	-	15/16	33.27	26.04	24.26			1275
689-502	3/4	1.0	34.93	28.53	27.05			1060
	-	1.1/16	38.61	30.61	27.82			1250
	-	1.1/8	36.58	30.86	29.33			900
	-	7/8	38.10	32.29	30.81			900
	-	1.1/4	41.40	35.69	32.64			3.38
689-518	1.0	1.5/16	42.80	36.88	33.89	2.50	810	