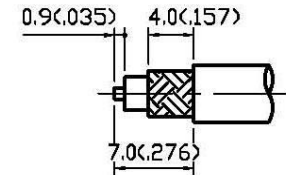
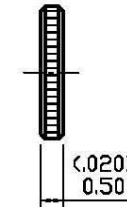
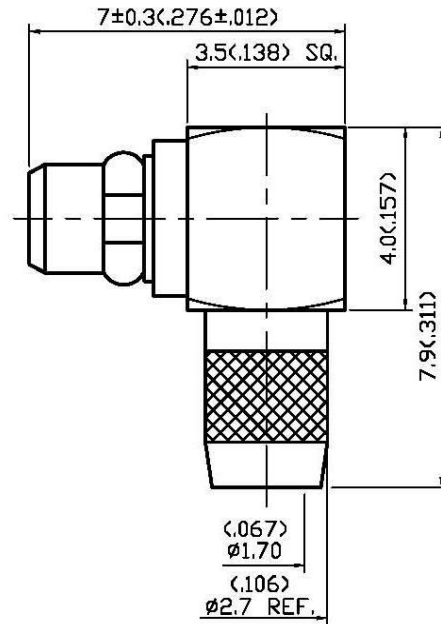
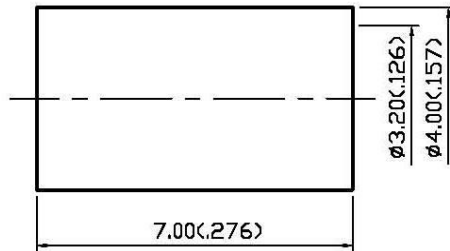


NO	DESCRIPTION	DATE
⚠	DEL CONTACT	11.22.11'
⚠	DEL PROOF VOLTAGE WORKING VOLTAGE → VOLTAGE RATING	04.08.13'



⚠ STRIPPING DIMENSION
SCALE 2:1

1.0 ELECTRICAL

- 1.1 FREQUENCY RANGE: DC-8 GHz
- 1.2 NOMINAL IMPEDANCE: 60 OHMS
- 1.3 VOLTAGE RATING: 250 VOLTS MAX. ⚠
- 1.4 VSWR: 1.35 MAX.

2.0 MATERIALS

- 2.1 BODIES: BRASS PER JIS-C3604
BERYLLIUM COPPER PER ASTM B196 UNS C17300
- 2.2 CENTER CONTACT: BRASS PER JIS-C3604
- 2.3 INSULATION: TEFLON PER ASTM D1457 AND ASTM D1710
- 2.4 CRIMP FERRULE: BRASS PER JIS-C2700

3.0 FINISHES AND OTHERS

- 3.1 SEE BELOW TABLE FOR DETAILS.

4.0 MECHANICAL

- 4.1 INTERFACE IN ACCORDANCE WITH: BS EN 122340
- 4.2 FOR USE WITH RG174U OR SIMILAR STYLE CABLE
- 4.3 CABLE ATTACHMENT: OUTER: CRIMP, INNER: SOLDER
- 4.4 CRIMP SIZE REQUIRED: FERRULE: 3.5(.138) HEX. CRIMP TOOL

5.0 ENVIRONMENTAL

- 5.1 OPERATING TEMPERATURE RANGE: -55° C TO +165° C

APPROVED by _____ DATE: _____

NO	DESCRIPTION	MATERIAL	Q'TY	FINISH
6	CAP	BRASS	1	GOLD 3μ" MIN.
5	BODY	BRASS	1	GOLD 3μ" MIN.
4	CENTER CONTACT	BRASS	1	GOLD 30μ" MIN.
3	INSULATION	TEFLON	1	NONE
2	WASHER	BERYLLIUM COPPER	1	GOLD 3μ" MIN.
1	CRIMP FERRULE	BRASS	1	GOLD



DESCRIPTION		MMCX RIGHT ANGLE PLUG CRIMP									
製圖	DRAWN	TOLERANCE	品名	37-02-4	T.G.G	174U	日期	DATE	版次	REV.	B-2
	<i>Kristina</i>										
檢圖	CHECK	APPROVAL	單位	UNIT	DWG.NO.	37-0008	SCALE	比例	8:1		
	<i>Arc</i>									XXX	±0.05
認定	APPROVAL	ANGLE	±5°								
	<i>Angela</i>										